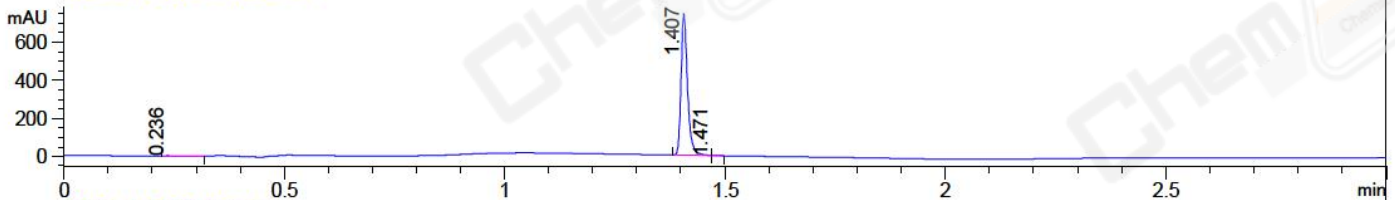
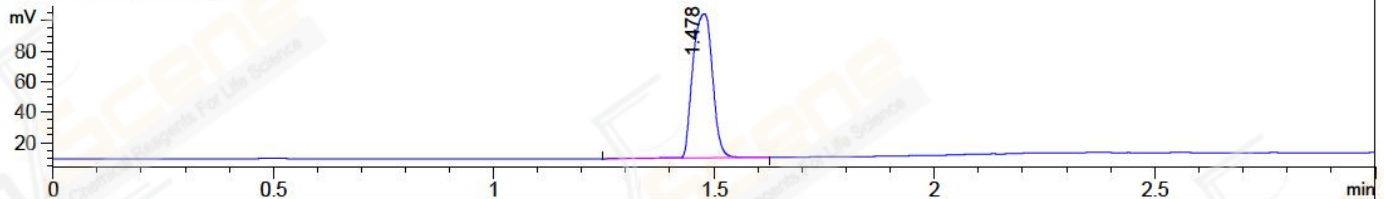


File ..\2018\20180723\20180723\CPK2018-723-09195.D Tgt Mass (CHM):
 Injection Date : 23 Jul 18 2:41 pm +0800 Seq. Line : 76
 Sample Name : CPK2018-723-09195 Location : P2-A-03
 Acq. Operator : SYSTEM Inj : 1
 Spec. Reported : MS Integration Inj Volume : 1 ul
 Acq. Method : D:\LCMS03\Data\2018\20180723\20180723\1-POS-3MIN.M
 Analysis Method : D:\LCMS03\Data\2018\20180723\20180723\1-POS-3MIN.M
 Catalog No : CS-0326 Batch#09195
 Method Info : Mobile Phase: A: water(0.01%TFA) B:ACN(0.01%TFA)
 Gradient: 5% to 95%B within 1.3 min
 Flow Rate :1.8ml/min
 Column :SunFire C18, 4.6*50mm,3.5um A-RP-186
 Oven Temperature : 45C

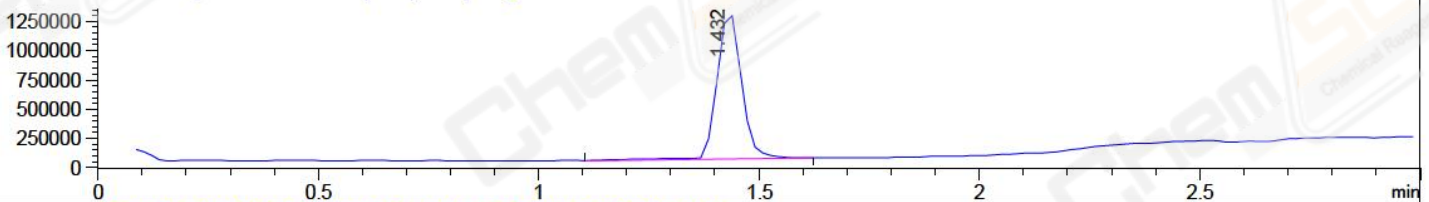
DAD1 A, Sig=214,4 Ref=off



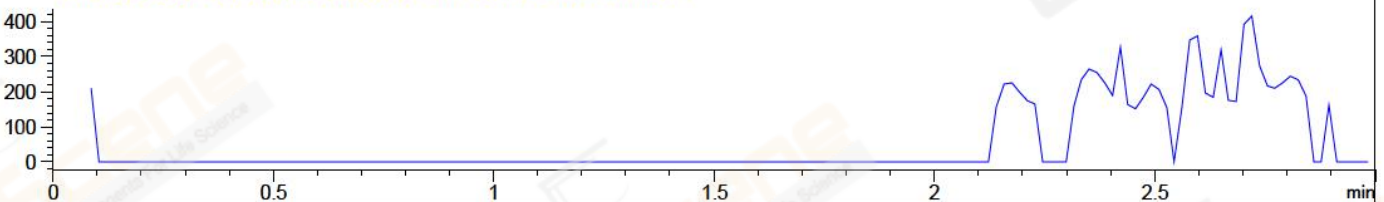
ELS1 A, ELSD Signal



MSD1 TIC, MS File ES-API, Pos, Scan, Frag: 70



Ion 405.4, MSD1 405.4, Target Mass 404.4 +H Positive, EIC=405.1:406.1



Integration Results for DAD1 A, Sig=214,4 Ref=off

RetTim	Width	Area	Height	Area%	MS (+)
0.24	0.02	0.55	0.36	0.07	102
1.41	0.02	759.17	746.94	99.79	307
1.47	0.02	1.03	1.12	0.14	307

Integration Results for ELS1 A, ELSD Signal

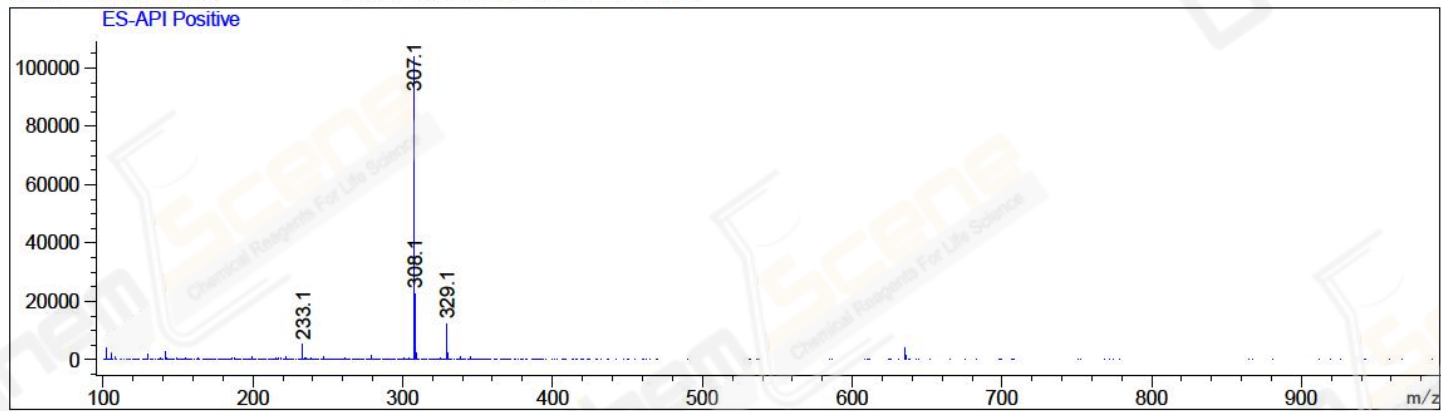
RetTim	Width	Area	Height	Area%	MS (+)
1.48	0.05	294.37	94.58	100.00	307

Integration Results for MSD1 TIC, MS File

RetTim	Width	Area	Height	Area%	MS (+)
1.43	0.06	4864563.00	1256900.63	100.00	307

Ret. Time: 1.43

<<<< POSITIVE SPECTRA >>>>



*** End of Report ***