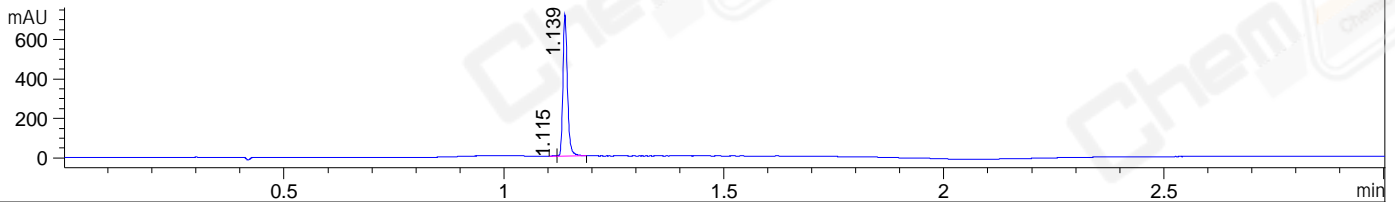
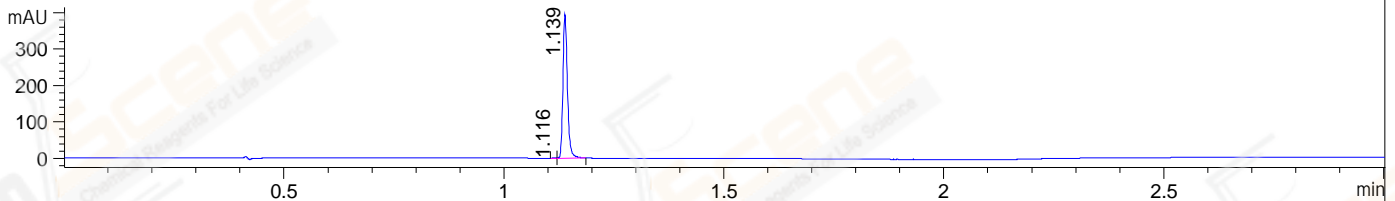


File ..DATA\2019\20190829\713\CPK2019-828-09296-.D Tgt Mass (CHM):
Injection Date : 29 Aug 19 10:14 am +0800 Seq. Line : 20
Sample Name : CPK2019-828-09296 Location : P1-E-02
Acq. Operator : ZJ_1432 Inj : 1
Spec. Reported : MS Integration Inj Volume : 1 ul
Acq. Method : D:\Chem32\1\data\2019\20190829\713\1-POS-3MIN.M
Analysis Method : D:\CHEM32\1\DATA\2019\20190829\713\1-POS-3MIN.M
Catalog No : CS-1241 Batch#09296
Method Info : Mobile Phase: A: water(0.01%TFA) B:ACN(0.01%TFA)
Gradient: 5% to 95%B within 1.3 min
Flow Rate :1.8ml/min
Column :SunFire C18, 4.6*50mm,3.5um A-RP-433
Oven Temperature : 45□

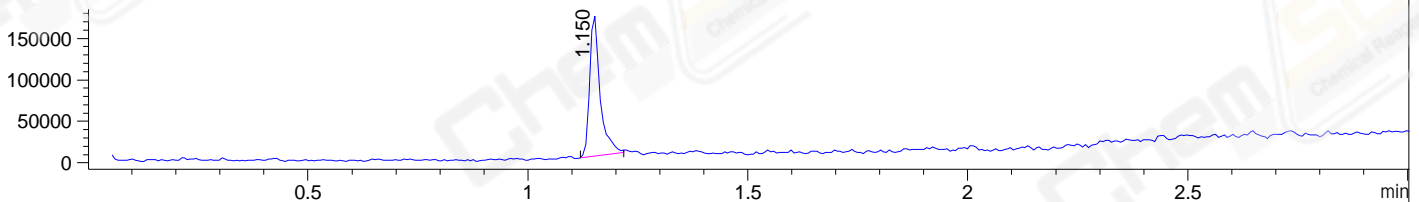
DAD1 B, Sig=214,4 Ref=off



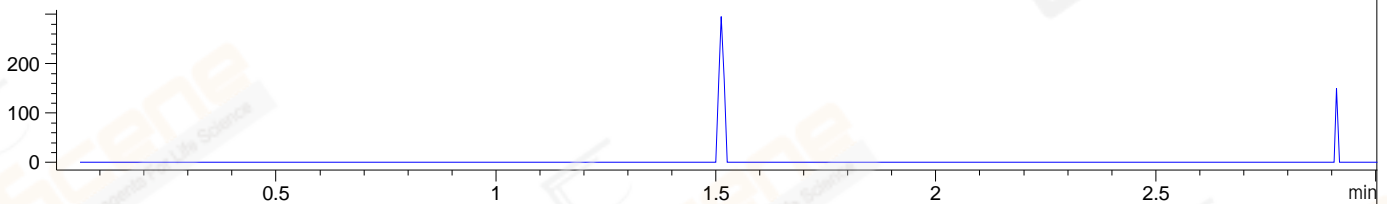
DAD1 C, Sig=254,4 Ref=off



MSD1 TIC, MS File ES-API, Pos, Scan, Frag: 70



Ion 524.8945, MSD1 524.8945, Target Mass 523.8945 +H Positive, EIC=524.59:525.59



Integration Results for DAD1 B, Sig=214,4 Ref=off

RetTim	Width	Area	Height	Area%	MS (+)
1.11	0.01	1.37	2.01	0.27	ND
1.14	0.01	514.54	717.85	99.73	487

Integration Results for DAD1 C, Sig=254,4 Ref=off

RetTim	Width	Area	Height	Area%	MS (+)
1.12	0.01	0.46	0.82	0.16	ND
1.14	0.01	281.89	395.12	99.84	487

Integration Results for MSD1 TIC, MS File

RetTim	Width	Area	Height	Area%	MS (+)
1.15	0.03	282337.84	170317.84	100.00	487

Ret. Time: 1.15

<<<< POSITIVE SPECTRA >>>>

ES-API Positive

