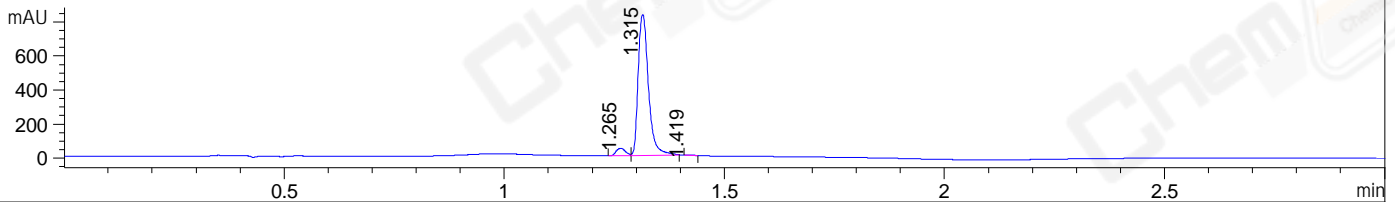
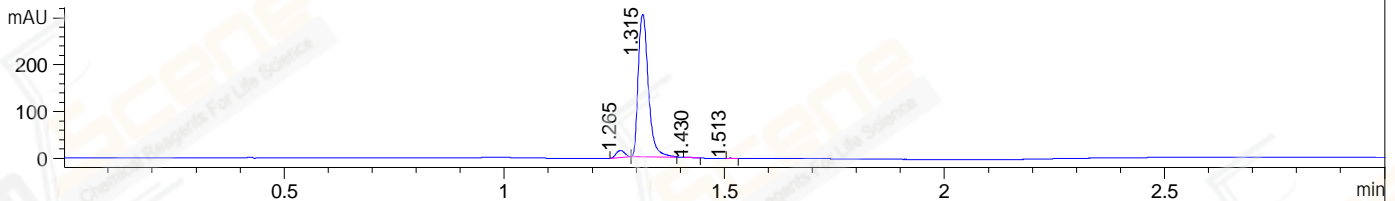


File ..\DATA\2019\20190411\561\CPK2019-411-09546.D Tgt Mass (CHM):
 Injection Date : 11 Apr 19 3:39 pm +0800 Seq. Line : 12
 Sample Name : CPK2019-411-09546 Location : P1-A-05
 Acq. Operator : LQ_1052 Inj : 1
 Spec. Reported : MS Integration Inj Volume : 1 ul
 Acq. Method : D:\Chem32\1\data\2019\20190411\561\1-POS-3MIN-1.M
 Analysis Method : D:\CHEM32\1\DATA\2019\20190411\561\1-POS-3MIN-1.M
 Catalog No : CS-0068 Batch# 09546
 Method Info : Mobile Phase: A: water(0.01%TFA) B:ACN(0.01%TFA)
 Gradient: 5% to 95%B within 1.3 min
 Flow Rate :1.8ml/min
 Column :SunFire C18, 4.6*50mm,3.5um A-RP-314
 Oven Temperature : 45□

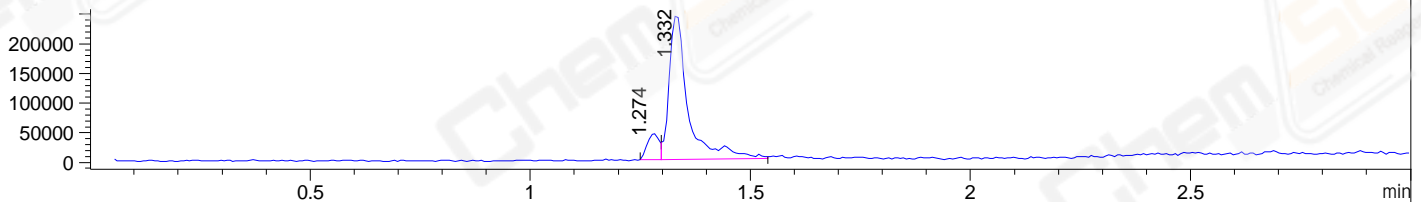
DAD1 B, Sig=214,4 Ref=off



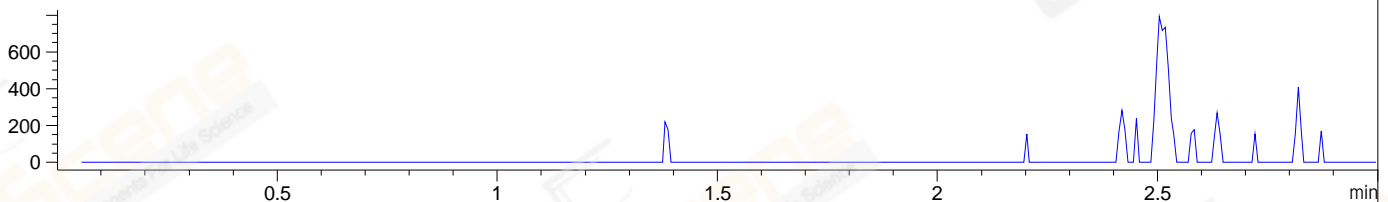
DAD1 C, Sig=254,4 Ref=off



MSD1 TIC, MS File ES-API, Pos, Scan, Frag: 70



Ion 481, MSD1 481, Target Mass 480 +H Positive, EIC=480.7:481.7



Integration Results for DAD1 B, Sig=214,4 Ref=off

RetTim	Width	Area	Height	Area%	MS (+)
1.26	0.02	63.68	43.31	4.51	365
1.31	0.03	1348.83	828.36	95.43	444
1.42	0.02	0.95	0.77	0.07	444

Integration Results for DAD1 C, Sig=254,4 Ref=off

RetTim	Width	Area	Height	Area%	MS (+)
1.26	0.02	20.85	15.32	4.11	365
1.31	0.03	485.75	304.75	95.73	444
1.43	0.02	0.42	0.38	0.08	444
1.51	0.01	0.39	0.48	0.08	444

Integration Results for MSD1 TIC, MS File

RetTim	Width	Area	Height	Area%	MS (+)
1.27	0.03	88586.35	44512.48	10.85	365
1.33	0.05	727980.25	246761.69	89.15	444

Ret. Time: 1.27 <<<< POSITIVE SPECTRA >>>>

ES-API Positive



Ret. Time: 1.33

ES-API Positive

