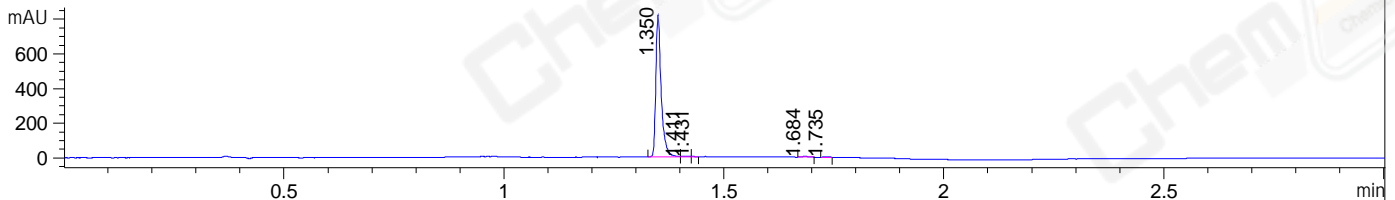
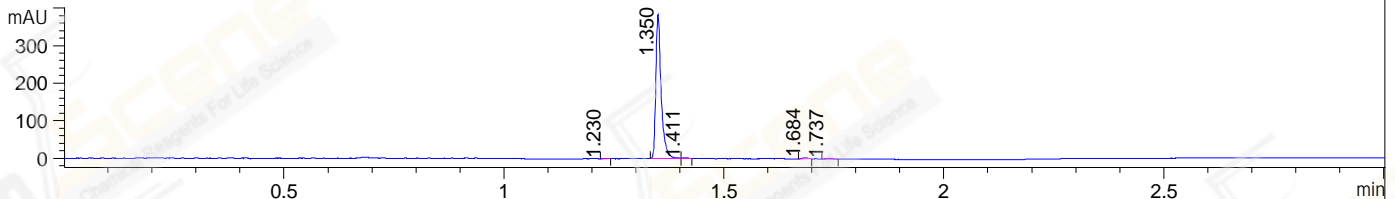


File ..\DATA\2020\20200430\943\CPK2020-429-09575.D Tgt Mass (CHM):
 Injection Date : 30 Apr 20 11:02 am +0800 Seq. Line : 27
 Sample Name : CPK2020-429-09575 Location : P1-B-06
 Acq. Operator : ZJ_1432 Inj : 1
 Spec. Reported : MS Integration Inj Volume : 1 ul
 Acq. Method : D:\Chem32\1\data\2020\20200430\943\1-POS-3MIN.M
 Analysis Method : D:\CHEM32\1\DATA\2020\20200430\943\1-POS-3MIN.M
 Catalog No : CS-3168
 Method Info : Mobile Phase: A: water(0.01%TFA) B:ACN(0.01%TFA)
 Gradient: 5% to 95%B within 1.3 min
 Flow Rate :1.8ml/min
 Column :SunFire C18, 4.6*50mm,3.5um A-RP-607
 Oven Temperature : 45□

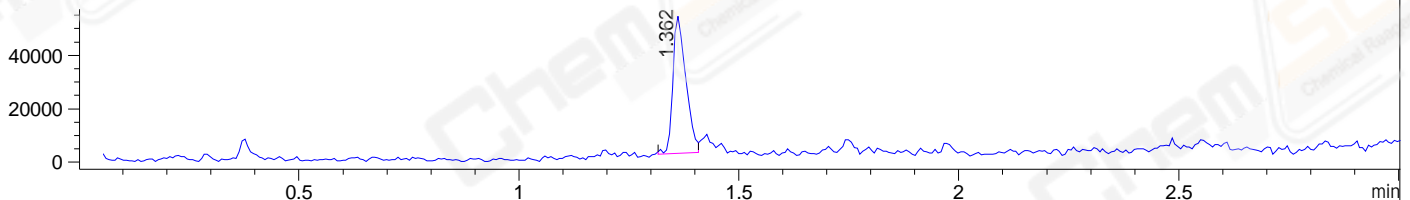
DAD1 B, Sig=214,4 Ref=off



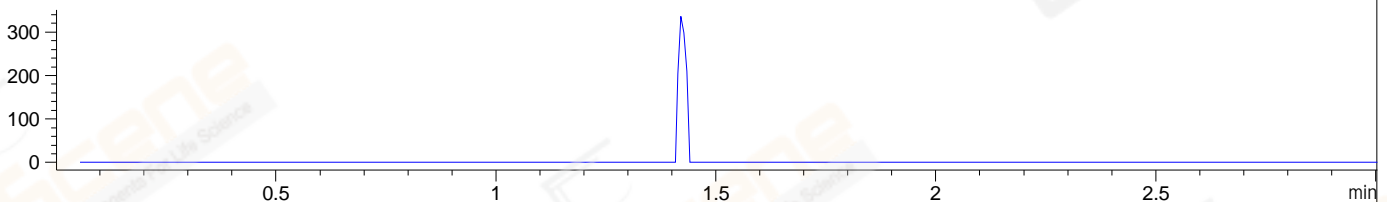
DAD1 C, Sig=254,4 Ref=off



MSD1 TIC, MS File ES-API, Pos, Scan, Frag: 70



Ion 602, MSD1 602, Target Mass 601 +H Positive, EIC=601.7:602.7



Integration Results for DAD1 B, Sig=214,4 Ref=off

RetTim	Width	Area	Height	Area%	MS (+)
1.35	0.01	694.65	820.96	98.49	284
1.41	0.02	3.59	3.84	0.51	284
1.43	0.01	0.71	1.47	0.10	ND
1.68	0.01	4.50	4.71	0.64	ND
1.74	0.01	1.89	2.45	0.27	ND

Integration Results for DAD1 C, Sig=254,4 Ref=off

RetTim	Width	Area	Height	Area%	MS (+)
1.23	0.01	0.55	0.94	0.17	ND
1.35	0.01	322.78	383.60	98.35	284
1.41	0.01	1.22	1.47	0.37	284
1.68	0.01	2.34	3.08	0.71	ND
1.74	0.01	1.28	1.62	0.39	ND

Integration Results for MSD1 TIC, MS File

RetTim	Width	Area	Height	Area%	MS (+)
--------	-------	------	--------	-------	--------

-----|-----|-----|-----|-----|-----|
1.36 0.03 105723.91 51397.57 100.00 284

Ret. Time: 1.36

<<<< POSITIVE SPECTRA >>>>

ES-API Positive

