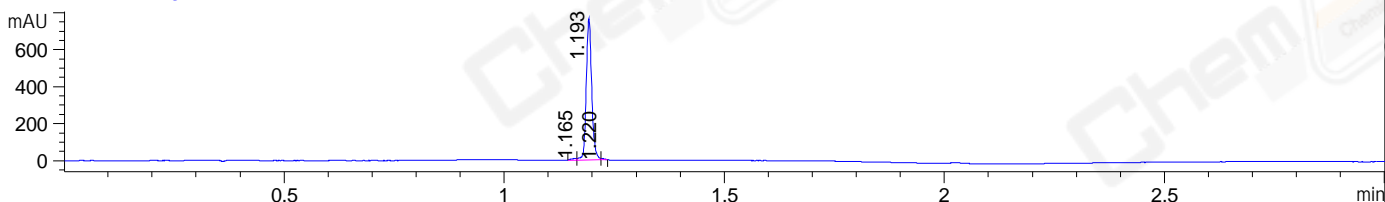
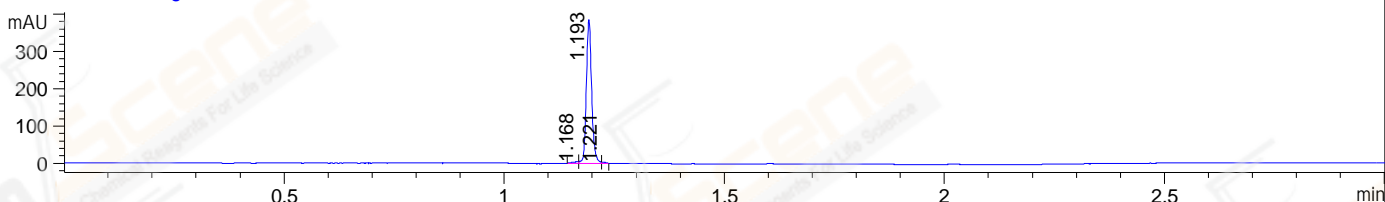


File ..1\DATA\2021\20210408\1340\LJC202104080027.D Tgt Mass (CHM):
 Injection Date : 8 Apr 21 3:24 pm +0800 Seq. Line : 39
 Sample Name : LJC202104080027 Location : P2-D-02
 Acq. Operator : yrz_1364 Inj : 1
 Spec. Reported : MS Integration Inj Volume : 0.3 ul
 Acq. Method : D:\Chem32\1\data\2021\20210408\1340\1-POS-3MIN.M
 Analysis Method : D:\CHEM32\1\DATA\2021\20210408\1340\1-POS-3MIN.M
 CAS NO. : 1948273-03-7
 Method Info : Mobile Phase: A: water(0.01%TFA) B:ACN(0.01%TFA)
 Gradient: 5% to 95%B within 1.3 min
 Flow Rate :1.8ml/min
 Column :SunFire C18, 4.6*50mm,3.5um A-RP-698

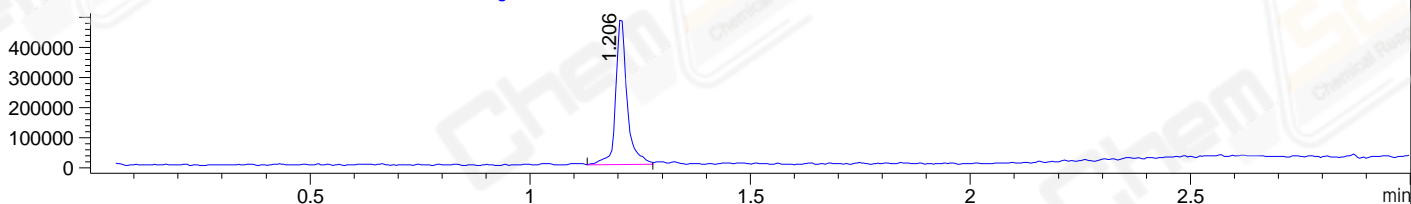
DAD1 B, Sig=214,4 Ref=off



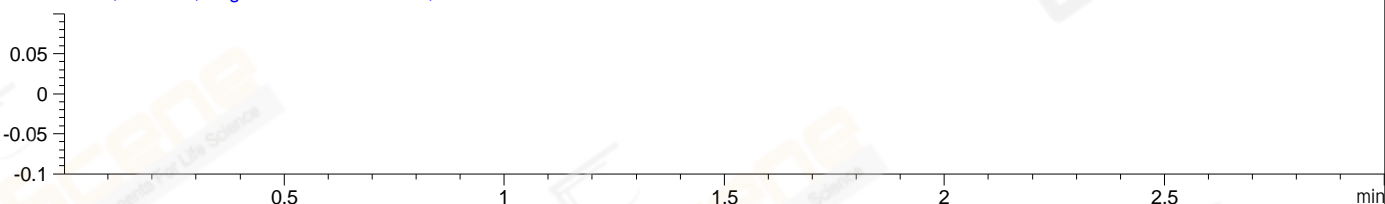
DAD1 C, Sig=254,4 Ref=off



MSD1 TIC, MS File ES-API, Pos, Scan, Frag: 70



Ion 1, MSD1 1, Target Mass 0 +H Positive, EIC=0.7:1.7



Integration Results for DAD1 B, Sig=214,4 Ref=off

RetTim	Width	Area	Height	Area%	MS (+)
1.16	0.01	7.89	9.20	1.19	130
1.19	0.01	653.77	766.06	98.32	223
1.22	0.01	3.30	6.46	0.50	223

Integration Results for DAD1 C, Sig=254,4 Ref=off

RetTim	Width	Area	Height	Area%	MS (+)
1.17	0.02	4.66	4.89	1.42	130
1.19	0.01	322.74	387.17	98.01	223
1.22	0.01	1.90	3.51	0.58	223

Integration Results for MSD1 TIC, MS File

RetTim	Width	Area	Height	Area%	MS (+)
1.21	0.03	879423.13	493148.16	100.00	223

Ret. Time: 1.21

<<<< POSITIVE SPECTRA >>>>

