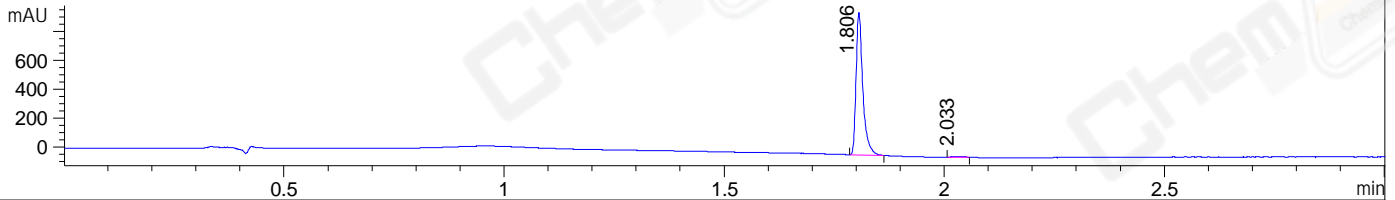
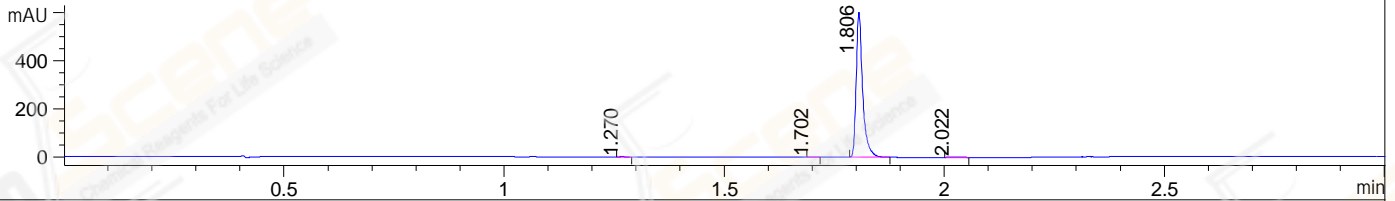


File ..\DATA\2021\20210510\1380\BIZ2021-508-WLQ2.D Tgt Mass (CHM):
 Injection Date : 10 May 21 12:47 pm +0800 Seq. Line : 41
 Sample Name : BIZ2021-508-WLQ2 Location : P1-D-03
 Acq. Operator : yrz_1364 Inj : 1
 Spec. Reported : MS Integration Inj Volume : 1 ul
 Acq. Method : D:\Chem32\1\data\2021\20210510\1380\1-POS-3MIN.M
 Analysis Method : D:\CHEM32\1\DATA\2021\20210510\1380\1-POS-3MIN.M
 CAS NO. : 864232-34-8
 Method Info : Mobile Phase: A: water(0.01%TFA) B:ACN(0.01%TFA)
 Gradient: 5% to 95%B within 1.3 min
 Flow Rate :1.8ml/min
 Column :SunFire C18, 4.6*50mm,3.5um A-RP-698

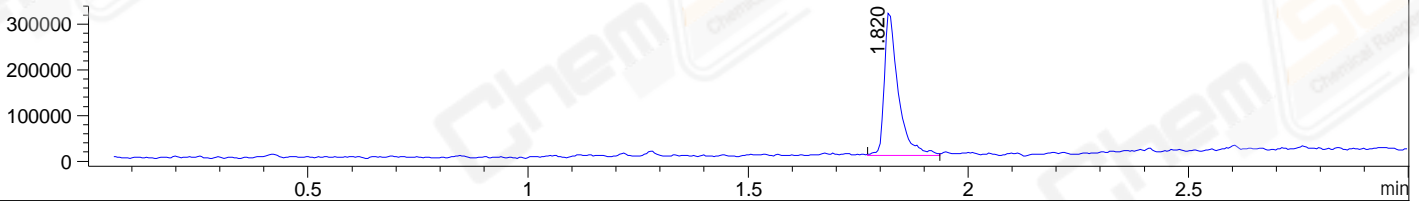
DAD1 B, Sig=214,4 Ref=off



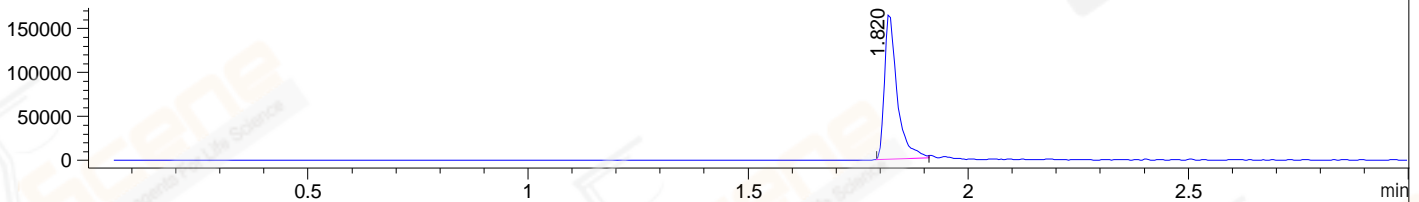
DAD1 C, Sig=254,4 Ref=off



MSD1 TIC, MS File ES-API, Pos, Scan, Frag: 70



Ion 339, MSD1 339, Target Mass 338 +H Positive, EIC=338.7:339.7



Integration Results for DAD1 B, Sig=214,4 Ref=off

RetTim	Width	Area	Height	Area%	MS(+)
1.81	0.02	1050.13	987.20	99.15	339
2.03	0.03	8.98	4.92	0.85	339

Integration Results for DAD1 C, Sig=254,4 Ref=off

RetTim	Width	Area	Height	Area%	MS(+)
1.27	0.02	0.98	0.97	0.16	299
1.70	0.02	0.79	0.82	0.13	ND
1.81	0.02	613.51	602.61	99.26	339
2.02	0.03	2.78	1.55	0.45	339

Integration Results for MSD1 TIC, MS File

RetTim	Width	Area	Height	Area%	MS(+)
1.82	0.03	698819.50	316578.19	100.00	339

Ret. Time: 1.82

<<<< POSITIVE SPECTRA >>>>

ES-API Positive

