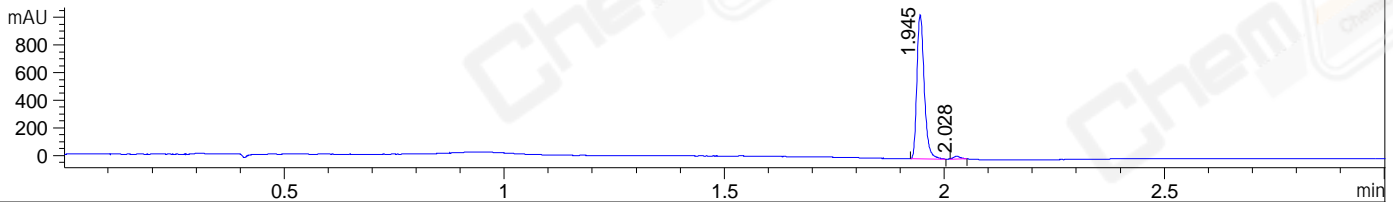
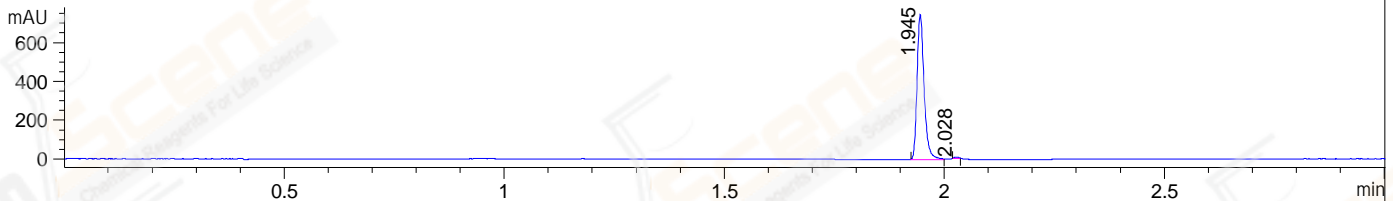


File ..\DATA\2021\20210514\1388\BIZ2021-514-WMX4.D Tgt Mass (CHM):
Injection Date : 14 May 21 7:36 pm +0800 Seq. Line : 30
Sample Name : BIZ2021-514-WMX4 Location : P1-B-07
Acq. Operator : yrz_1364 Inj : 1
Spec. Reported : MS Integration Inj Volume : 1 ul
Acq. Method : D:\Chem32\1\data\2021\20210514\1388\1-POS-3MIN.M
Analysis Method : D:\CHEM32\1\DATA\2021\20210514\1388\1-POS-3MIN.M
CAS NO. : 211364-06-6
Method Info : Mobile Phase: A: water(0.01%TFA) B:ACN(0.01%TFA)
Gradient: 5% to 95%B within 1.3 min
Flow Rate :1.8ml/min
Column :SunFire C18, 4.6*50mm,3.5um A-RP-698

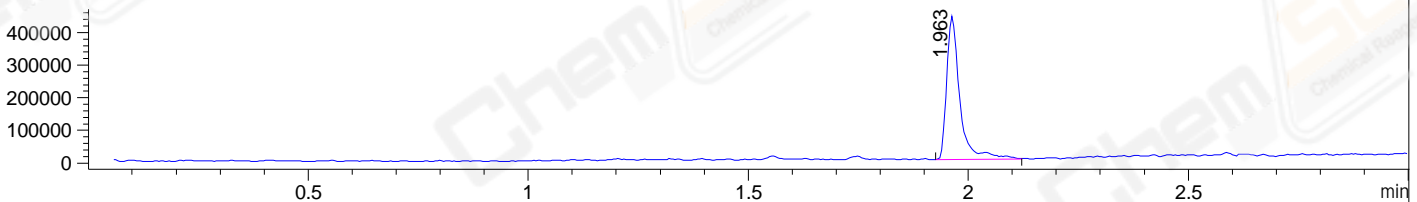
DAD1 B, Sig=214,4 Ref=off



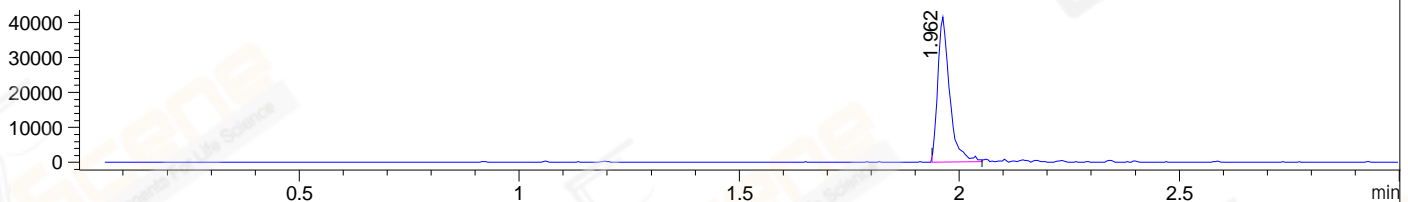
DAD1 C, Sig=254,4 Ref=off



MSD1 TIC, MS File ES-API, Pos, Scan, Frag: 70



Ion 489, MSD1 489, Target Mass 488 +H Positive, EIC=488.7:489.7



Integration Results for DAD1 B, Sig=214,4 Ref=off

RetTim	Width	Area	Height	Area%	MS(+)
1.95	0.02	1212.02	1046.82	98.31	490
2.03	0.02	20.87	19.34	1.69	490

Integration Results for DAD1 C, Sig=254,4 Ref=off

RetTim	Width	Area	Height	Area%	MS(+)
1.95	0.02	830.56	749.43	99.33	490
2.03	0.01	5.58	7.52	0.67	490

Integration Results for MSD1 TIC, MS File

RetTim	Width	Area	Height	Area%	MS(+)
1.96	0.03	913976.69	439289.41	100.00	490

Ret. Time: 1.96

<<<< POSITIVE SPECTRA >>>>

ES-API Positive

