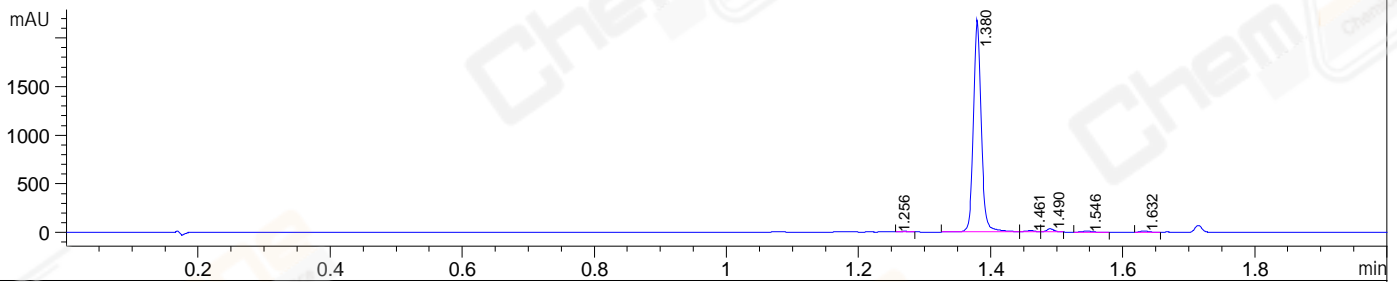
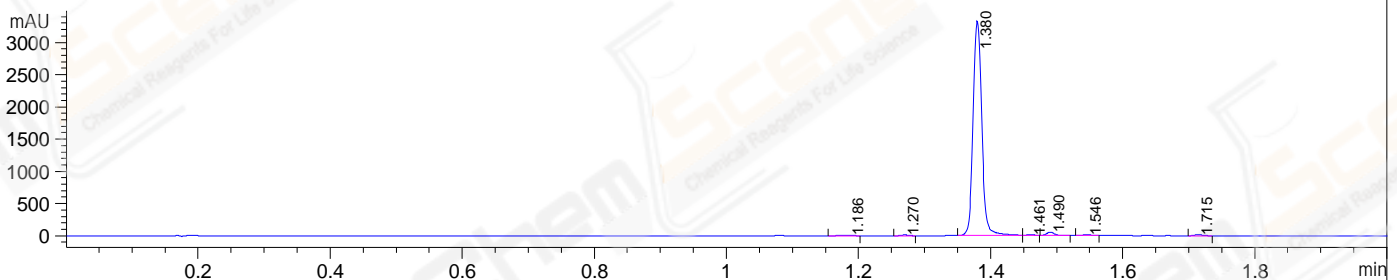


File E:\ChemStation\1\DATA\2023\2023-06\2023-06-07\CPK2023-606-102814-LCMS-20-005437.D
 Injection Date : 07-Jun-23, 11:23:52 Tgt Mass(EZX) :
 Sample Name : CPK2023-606-102814 Location : P1-A-01
 Acq. Operator : LY_2278 Inj : 1
 Spec. Reported : MS Integration Inj Volume : 1 ul
 Acq. Method : E:\ChemStation\1\Methods\1-POS-2MIN(1.5ML)-(0-500).M
 Analysis Method : E:\CHEMSTATION\1\METHODS\1-POS-2MIN(1.5ML)-(0-500).M
 CAS NO. : 1450644-28-6 WalkUp method: '1-POS-2MIN(0-500)' Project: CPK2023
 Method Info : Mobile Phase: A: water(0.01%FA) B:ACN(0.01%FA)
 Flow Rate :1.5ml/min
 Column :Shim-pack Scepter C18-120, 3.0*33mm,3um
 Oven Temperature : 45C

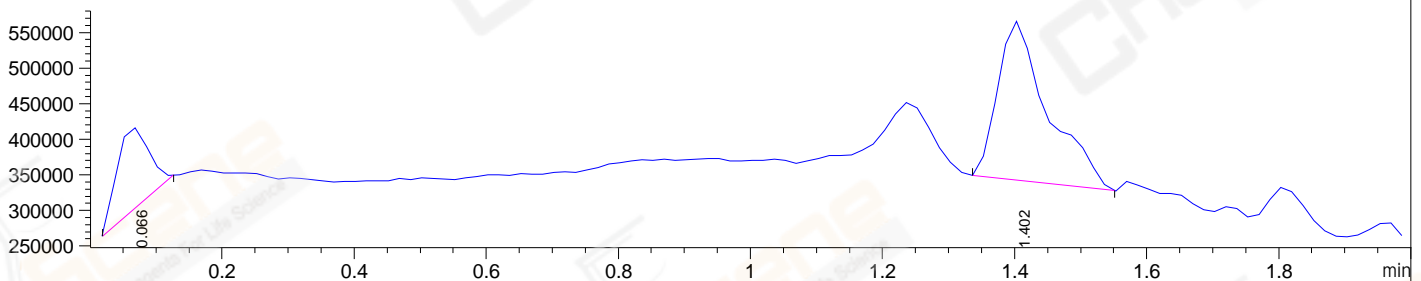
DAD1 A, Sig=214,4 Ref=off



DAD1 B, Sig=254,4 Ref=off



MSD1 TIC, MS File ES-API, Pos, Scan, Frag: 70



Integration Results for DAD1 A, Sig=214,4 Ref=off

RetTim	Width	Area	Height	Area%
1.26	0.01	5.11	0.06	0.28
1.38	0.01	1789.37	2177.64	96.79
1.46	0.01	9.12	11.17	0.49
1.49	0.01	24.18	31.20	1.31
1.55	0.01	9.54	10.92	0.52
1.63	0.01	11.48	14.10	0.62

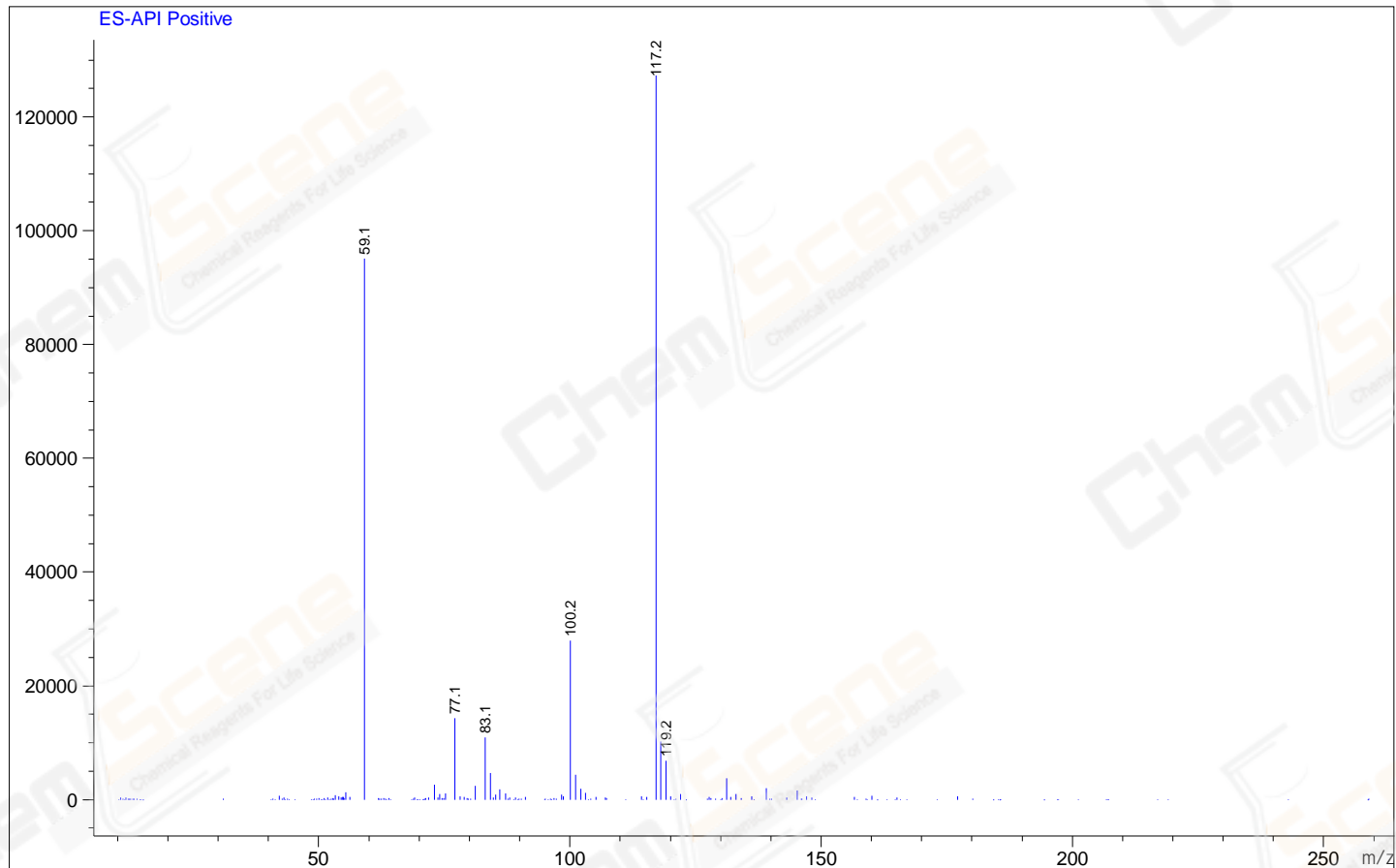
Integration Results for DAD1 B, Sig=254,4 Ref=off

RetTim	Width	Area	Height	Area%
1.19	0.02	12.73	10.40	0.40
1.27	0.01	8.73	11.53	0.28
1.38	0.01	3055.45	3326.04	96.99
1.46	0.01	5.70	8.35	0.18
1.49	0.01	41.71	51.83	1.32
1.55	0.01	12.20	15.29	0.39
1.71	0.01	13.84	17.13	0.44

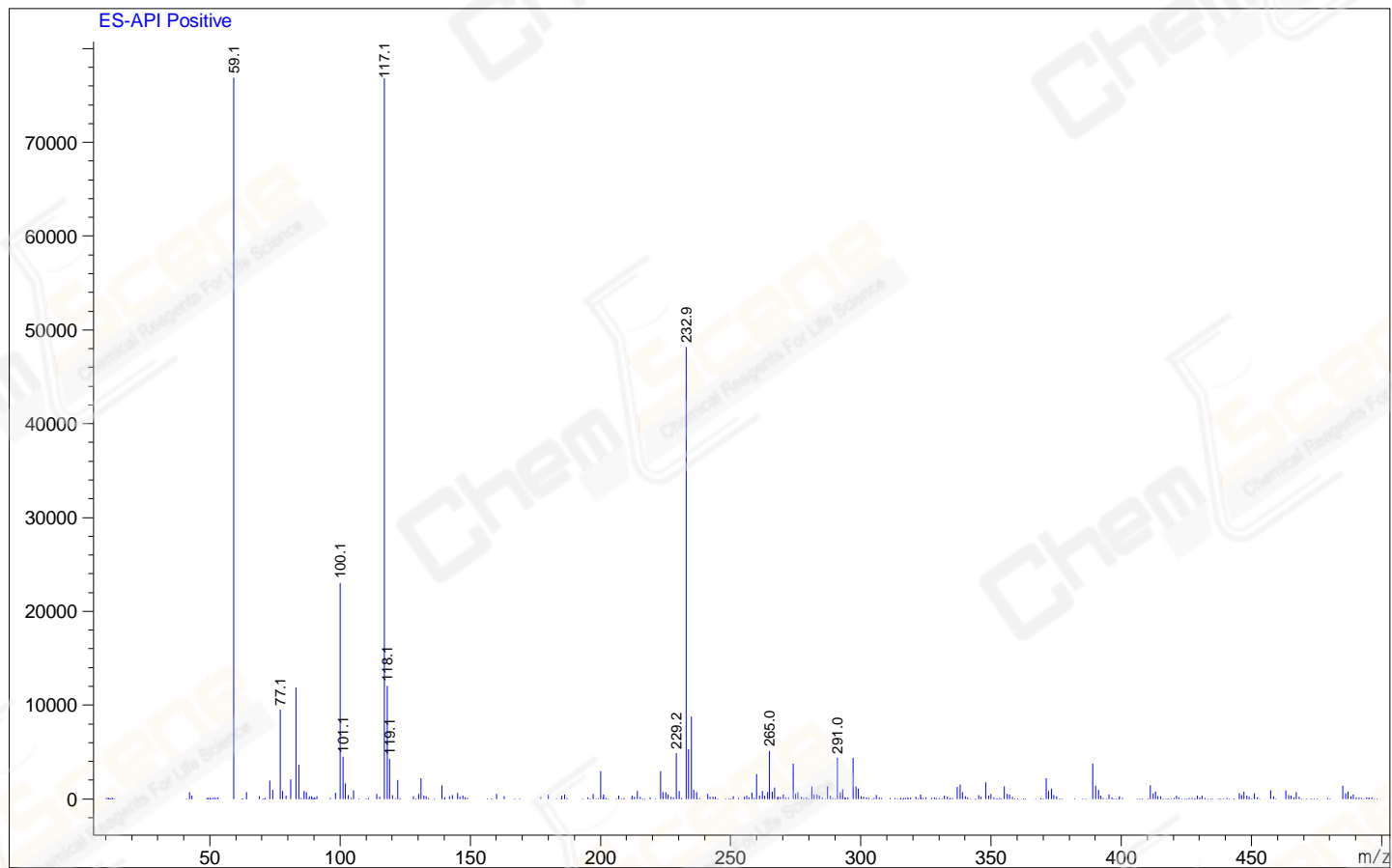
Integration Results for MSD1 TIC, MS File

RetTim	Width	Area	Height	Area%
0.07	0.06	392203.75	115845.16	24.97
1.40	0.08	1178455.50	222898.05	75.03

Ret. Time: 0.07 <<<< POSITIVE SPECTRA >>>>



Ret. Time: 1.40



*** End of Report ***