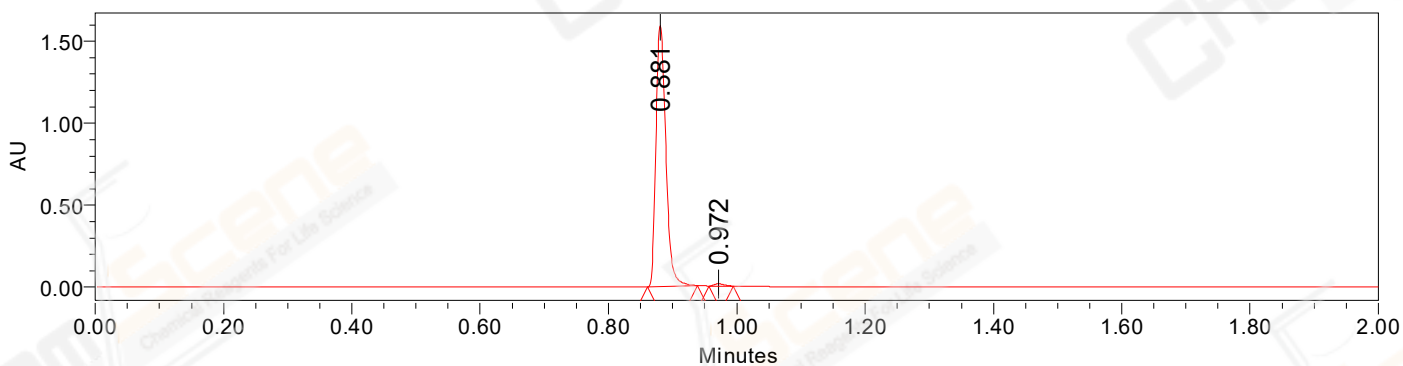


## SAMPLE INFORMATION

CAS NO.: 38183-03-8  
Sample information:  
Vial: 2:A,6  
Injection #: 1  
Injection Volume: 0.20 ul  
Run Time: 2.8 Minutes  
Sample Set Name: 20220330

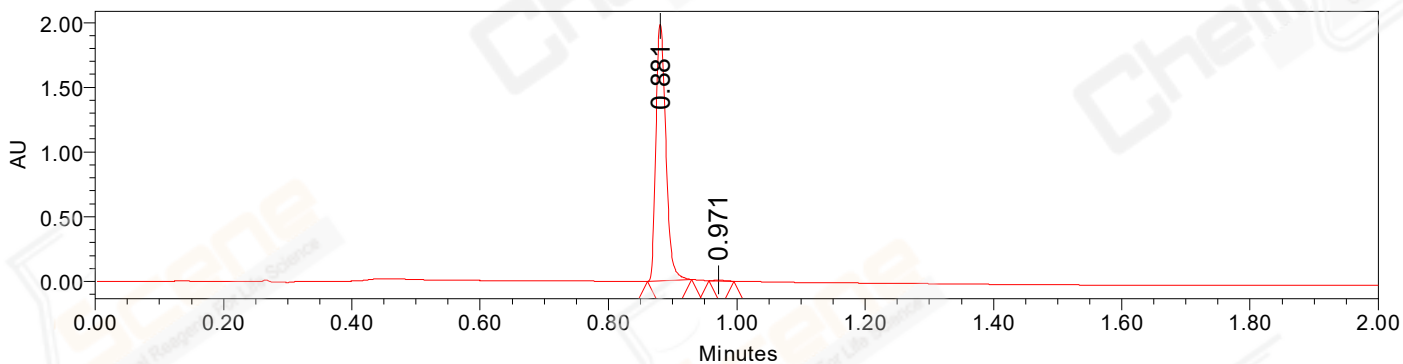
Acquired By: LY  
Date Acquired: 3/30/2022 10:36:12 AM CST  
Acq. Method Set: 1\_POS\_2MIN  
Date Processed: 3/30/2022 10:55:04 AM CST,  
Processing Method: PDA\_01, MS\_scan  
Channel Name: PDA Ch1 214nm@4.8nm, MS TIC,  
Column Name:

### Auto-Scaled Chromatogram



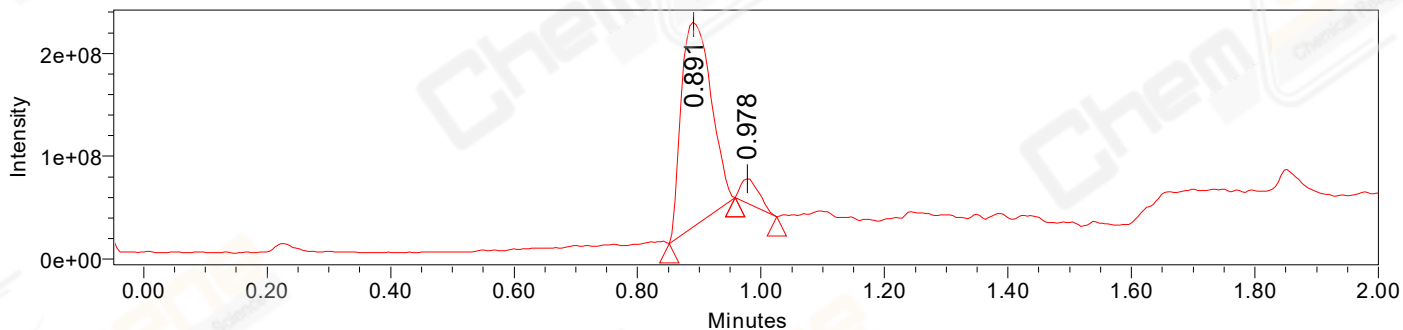
Processed Channel Descr. PDA Ch2 254nm@4.8nm

### Auto-Scaled Chromatogram



Processed Channel Descr. PDA Ch1 214nm@4.8nm

### Auto-Scaled Chromatogram



Processed Channel Descr. ACQ-SQD2 1: MS Scan MS TIC, Smoothed by 9 point Savitzky-Golay Filter., Time offset by -0.053 mins. (1: 150.00-1000.00 ES+, Centroid, CV=30)

Peak Results  
Channel Name: PDA Ch2 254nm@4.8nm

	RT	Width (sec)	Area	Height	% Area	Base Peak (Combined) (m/z)	Channel Name
1	0.881	4.650	1718078	1590825	99.16	151.98	PDA Ch2 254nm@4.8nm
2	0.972	2.250	14546	14474	0.84	254.91	PDA Ch2 254nm@4.8nm

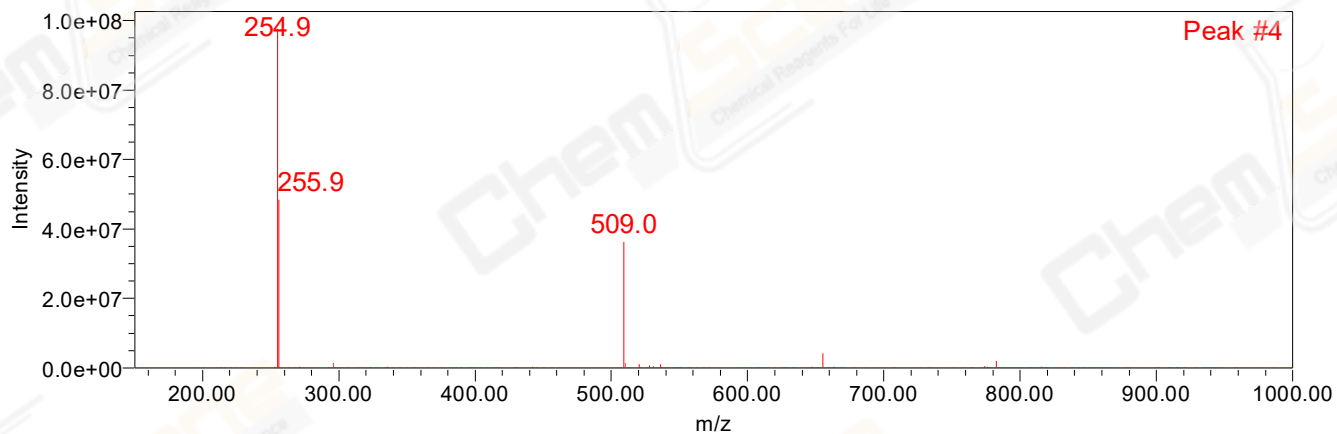
Peak Results  
Channel Name: PDA Ch1 214nm@4.8nm

	RT	Width (sec)	Area	Height	% Area	Base Peak (Combined) (m/z)	Channel Name
1	0.881	4.150	2143390	1982056	99.61	151.98	PDA Ch1 214nm@4.8nm
2	0.971	2.350	8345	8521	0.39	254.97	PDA Ch1 214nm@4.8nm

Peak Results  
Channel Name: MS TIC

	RT	Width (sec)	Area	Height	% Area	Base Peak (Combined) (m/z)	Channel Name
1	0.891	6.384	666399125	198443372	92.99	254.94	MS TIC
2	0.978	4.061	50246586	23831776	7.01	260.97	MS TIC

Match Plot



Match Plot

