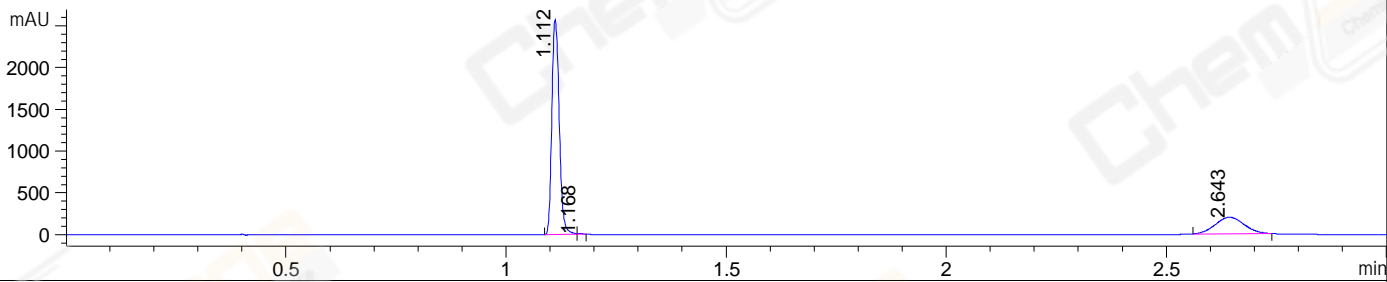
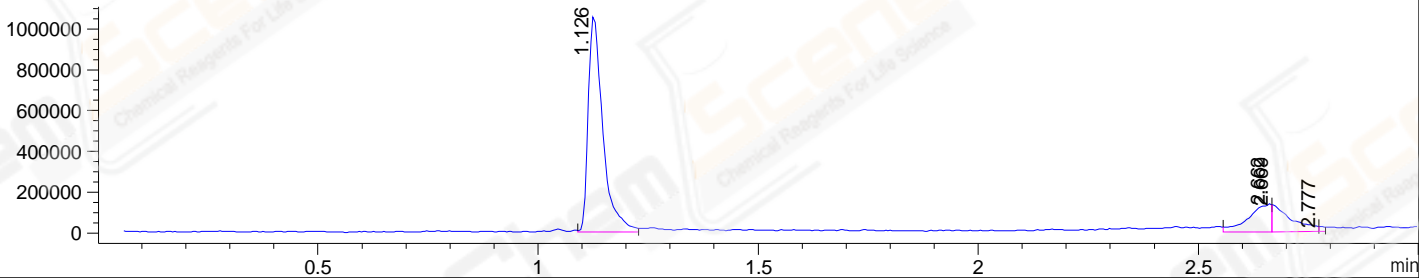


File ..\DATA\2021\20210528\1400\BIZ2021-528-WMX1.D Tgt Mass (CHM):  
 Injection Date : 28 May 21 7:48 pm +0800 Seq. Line : 143  
 Sample Name : BIZ2021-528-WMX1 Location : P1-C-03  
 Acq. Operator : wkt\_2222 Inj : 1  
 Spec. Reported : MS Integration Inj Volume : 1 ul  
 Acq. Method : D:\Chem32\1\data\2021\20210528\1400\1-POS-3MIN.M  
 Analysis Method : D:\CHEM32\1\DATA\2021\20210528\1400\1-POS-3MIN.M  
 CAS NO. : 162558-52-3  
 Method Info : Mobile Phase: A: water(0.01%TFA) B:ACN(0.01%TFA)  
 Gradient: 5% to 95%B within 1.3 min  
 Flow Rate :1.8ml/min  
 Column :SunFire C18, 4.6\*50mm,3.5um A-RP-698

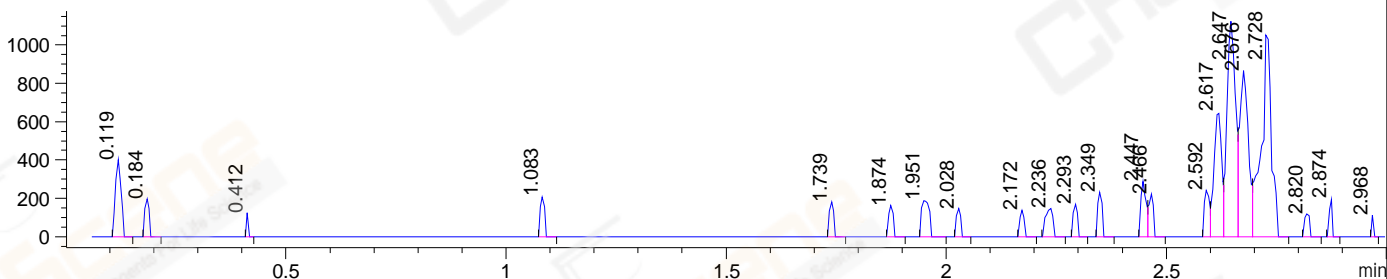
DAD1 C, Sig=254,4 Ref=off



MSD1 TIC, MS File ES-API, Pos, Scan, Frag: 70



Ion 327, MSD1 327, Target Mass 326 +H Positive, EIC=326.7:327.7



Integration Results for DAD1 C, Sig=254,4 Ref=off

RetTim	Width	Area	Height	Area%	MS(+)
1.11	0.02	3007.42	2570.30	76.61	246
1.17	0.01	8.94	11.91	0.23	246
2.64	0.08	909.01	198.61	23.16	397

Integration Results for MSD1 TIC, MS File

RetTim	Width	Area	Height	Area%	MS(+)
1.13	0.03	2458990.75	1060959.88	73.19	246
2.66	0.05	474806.72	136305.48	14.13	397
2.67	0.05	406339.69	133048.03	12.09	397
2.78	0.01	19742.43	24566.20	0.59	253

Ret. Time: 1.13

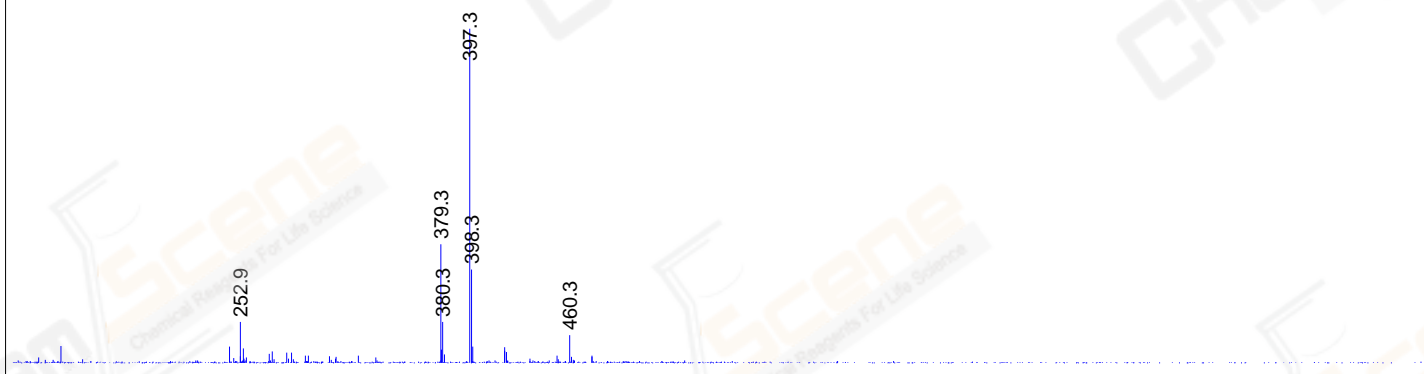
&lt;&lt;&lt;&lt; POSITIVE SPECTRA &gt;&gt;&gt;&gt;

ES-API Positive



Ret. Time: 2.66

ES-API Positive



Ret. Time: 2.67

ES-API Positive



Ret. Time: 2.78

ES-API Positive

