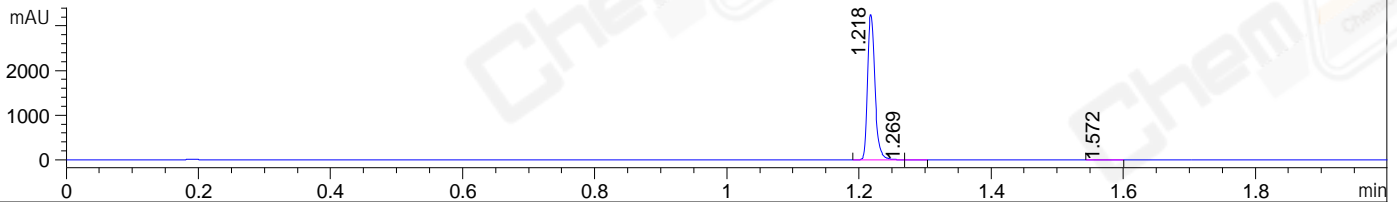
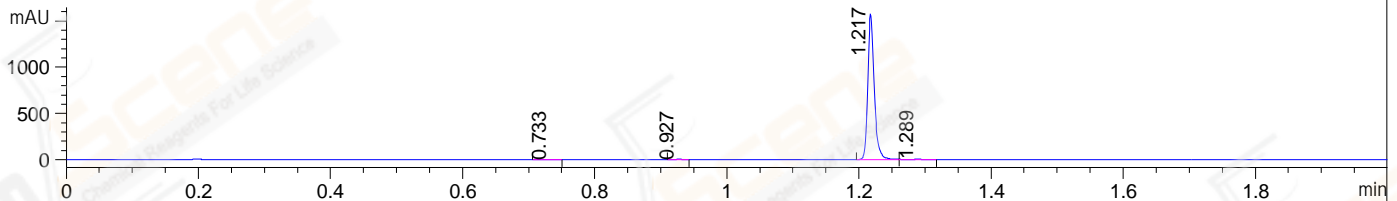


File ..\data\LXH\2021-06-07\WGY9640-006-1-014911.D Tgt Mass (EZ):
Injection Date : 7 Jun 21 12:44 pm +0800 Seq. Line : 0
Sample Name : WGY9640-006-1 Location : P1-F-03
Acq. Operator : LXH_1473 Inj : 1
Spec. Reported : MS Integration Inj Volume : 1 ul
Acq. Method : D:\LCMS\Methods\1-POS-UPLC2.0MIN(0.8ML)-(150-1000).M
Analysis Method : D:\LCMS\METHODS\1-POS-UPLC2.0MIN(0.8ML)-(150-1000).M
CAS NO. : 220460-92-4
Method Info : Mobile Phase: A: water(0.01%TFA) B:ACN(0.01%TFA)
Gradient: 5% to 95%B within 0.6 min
Flow Rate : 0.8ml/min
Column : Poroshell 120 EC- C18, 2.1*50mm,1.9um A-RP-749
Oven Temperature : 45C

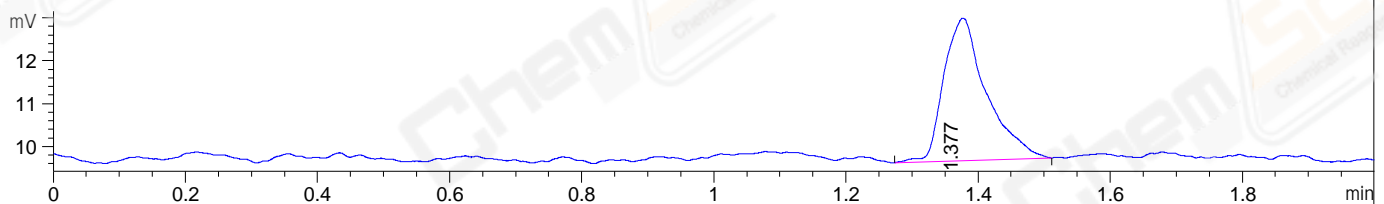
DAD1 A, Sig=214,4 Ref=off



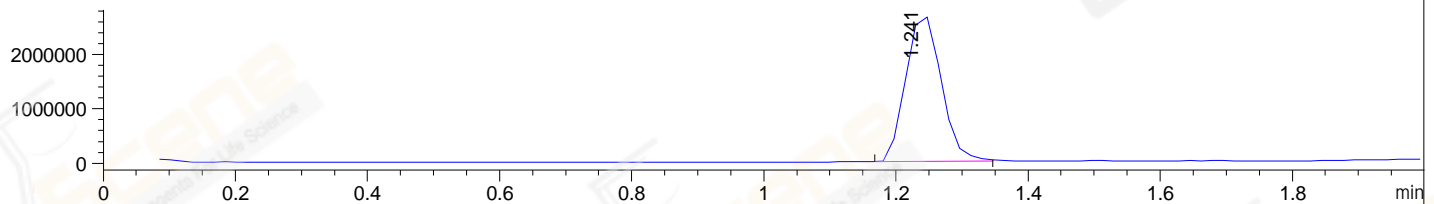
DAD1 B, Sig=254,4 Ref=off



ELS1 A, ELSD Signal



MSD1 TIC, MS File ES-API, Pos, Scan, Frag: 70



Integration Results for DAD1 A, Sig=214,4 Ref=off

RetTim	Width	Area	Height	Area%	MS (+)
1.22	0.01	2542.92	3272.77	99.75	403
1.27	0.01	3.02	3.10	0.12	403
1.57	0.01	3.32	4.12	0.13	159

Integration Results for DAD1 B, Sig=254,4 Ref=off

RetTim	Width	Area	Height	Area%	MS (+)
0.73	0.01	0.61	0.70	0.06	159
0.93	0.01	1.52	2.61	0.14	159
1.22	0.01	1066.74	1584.56	99.44	403
1.29	0.02	3.93	3.67	0.37	403

Integration Results for ELS1 A, ELSD Signal

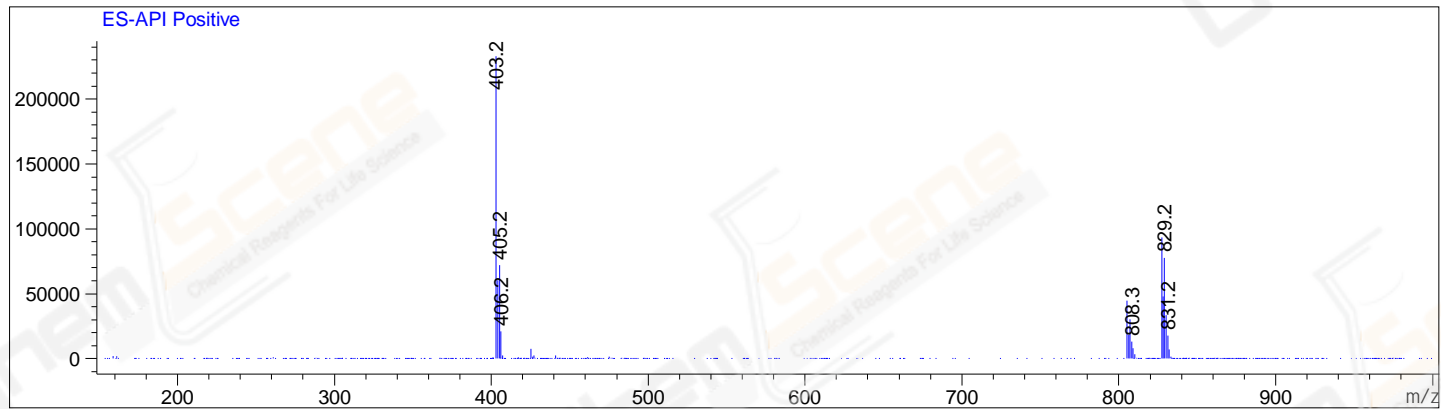
RetTim	Width	Area	Height	Area%	MS (+)
1.38	0.07	14.86	3.32	100.00	403

Integration Results for MSD1 TIC, MS File

RetTime	Width	Area	Height	Area%	MS(+)
1.24	0.06	9967428.00	2762781.75	100.00	403

Ret. Time: 1.24

<<<< POSITIVE SPECTRA >>>>



*** End of Report ***