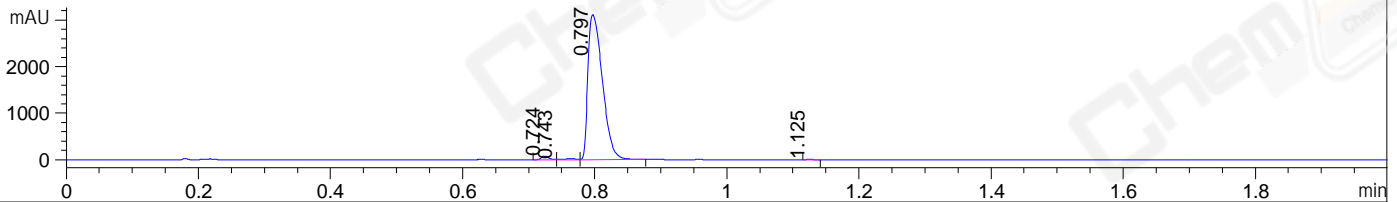
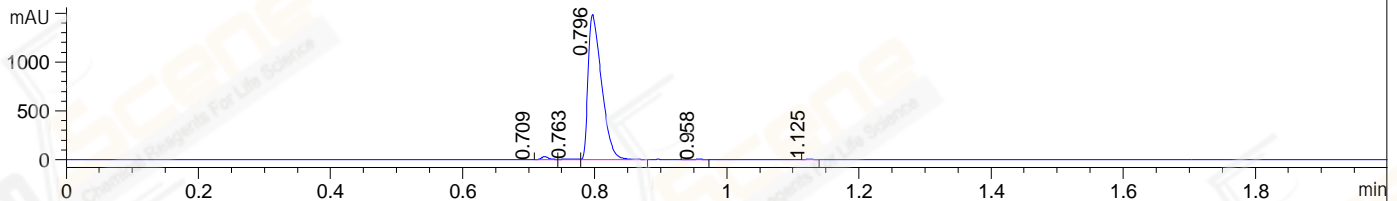


File ..ata\JIAJI\2021-06-10\HTQ8340-033-8-015394.D Tgt Mass (EZX):
 Injection Date : 10 Jun 21 6:48 pm +0800 Seq. Line : 0
 Sample Name : HTQ8340-033-8 Location : P1-B-04
 Acq. Operator : LXH_1473 Inj : 1
 Spec. Reported : MS Integration Inj Volume : 0.2 ul
 Acq. Method : D:\LCMS\Methods\1-POS-UPLC2.0MIN(0.8ML)-(150-1000).M
 Analysis Method : D:\LCMS\Methods\1-POS-UPLC2.0MIN(0.8ML)-(150-1000).M
 CAS NO. : 1234015-54-3
 Method Info : Mobile Phase: A: water(0.01%TFA) B:ACN(0.01%TFA)
 Gradient: 5% to 95%B within 0.6 min
 Flow Rate : 0.8ml/min
 Column : Poroshell 120 EC- C18, 2.1*50mm,1.9um A-RP-749
 Oven Temperature : 45C

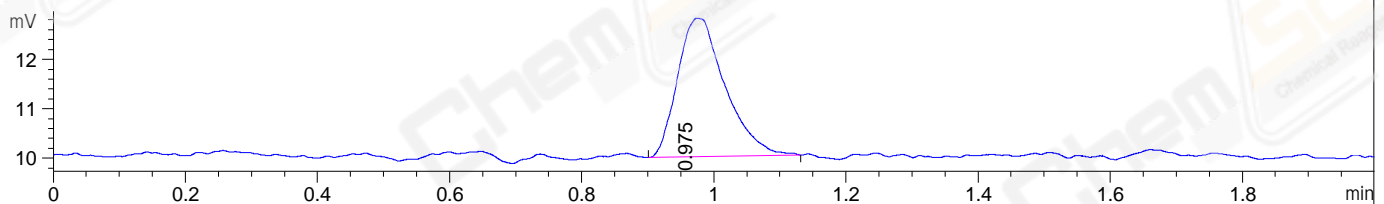
DAD1 A, Sig=214,4 Ref=off



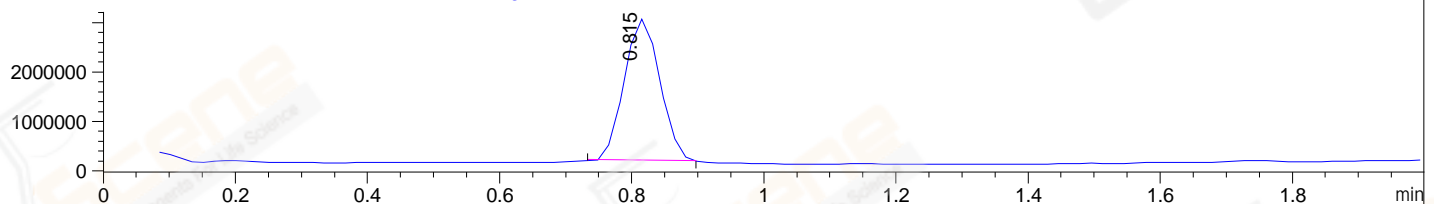
DAD1 B, Sig=254,4 Ref=off



ELS1 A, ELSD Signal



MSD1 TIC, MS File ES-API, Pos, Scan, Frag: 70



Integration Results for DAD1 A, Sig=214,4 Ref=off

RetTim	Width	Area	Height	Area%	MS (+)
0.72	0.01	61.06	79.33	1.27	180
0.74	0.02	26.03	4.18	0.54	366
0.80	0.03	4721.11	3120.42	98.01	366
1.13	0.01	8.82	12.15	0.18	180

Integration Results for DAD1 B, Sig=254,4 Ref=off

RetTim	Width	Area	Height	Area%	MS (+)
0.71	0.01	21.97	-0.12	1.03	180
0.76	0.02	7.90	7.28	0.37	366
0.80	0.02	2090.53	1491.09	98.35	366
0.96	0.01	2.46	2.70	0.12	180
1.13	0.01	2.73	4.42	0.13	180

Integration Results for ELS1 A, ELSD Signal

RetTim	Width	Area	Height	Area%	MS (+)
--------	-------	------	--------	-------	--------

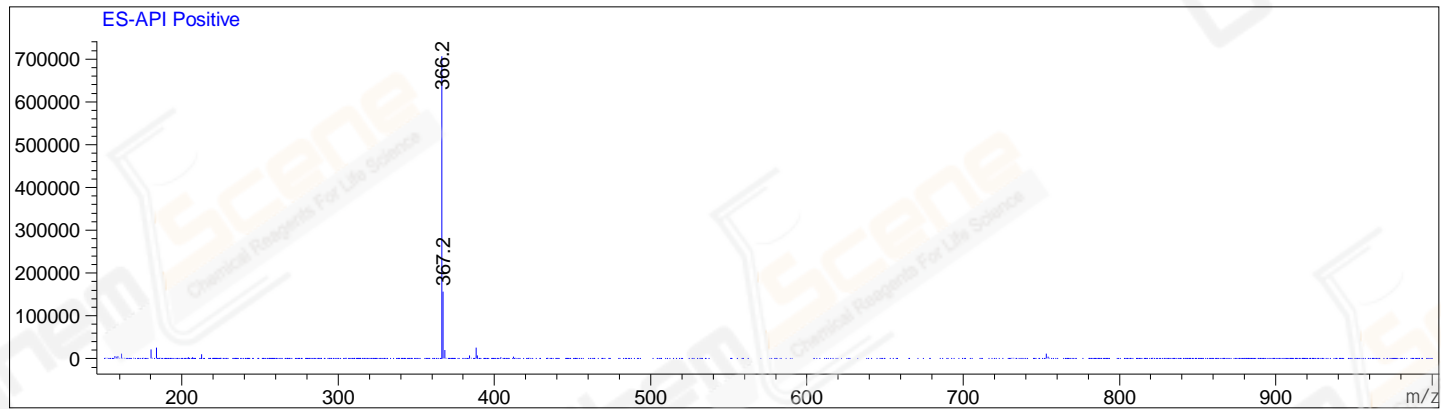
0.97 0.07 14.02 2.81 100.00 180

Integration Results for MSD1 TIC, MS File

RetTime	Width	Area	Height	Area%	MS(+)
0.82	0.06	10727390.00	2899656.50	100.00	366

Ret. Time: 0.82

<<<< POSITIVE SPECTRA >>>>



*** End of Report ***