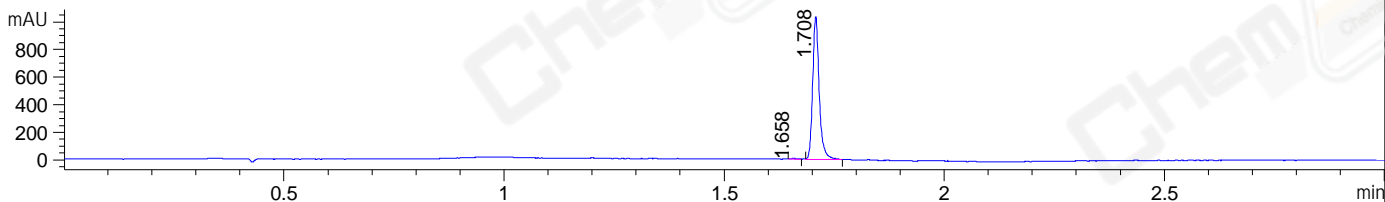
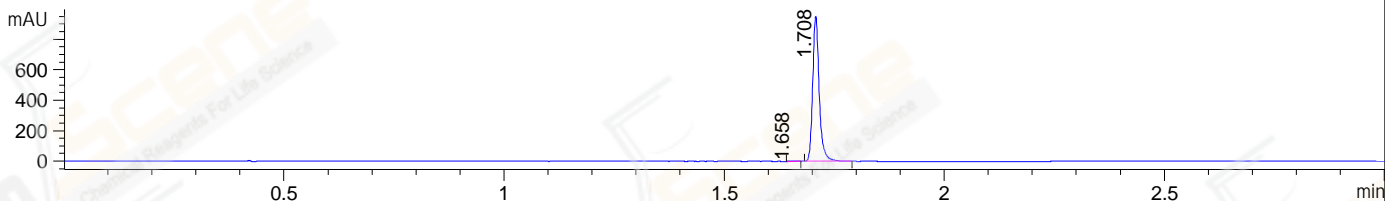


File ..\DATA\2021\20210618\1423\BIZ2021-618-WLQ2.D Tgt Mass (CHM):
 Injection Date : 18 Jun 21 7:24 pm +0800 Seq. Line : 24
 Sample Name : BIZ2021-618-WLQ2 Location : P1-A-04
 Acq. Operator : myh_2380 Inj : 1
 Spec. Reported : MS Integration Inj Volume : 1 ul
 Acq. Method : D:\Chem32\1\data\2021\20210618\1423\1-POS-3MIN.M
 Analysis Method : D:\CHEM32\1\DATA\2021\20210618\1423\1-POS-3MIN.M
 CAS NO. : 1351761-44-8
 Method Info : Mobile Phase: A: water(0.01%TFA) B:ACN(0.01%TFA)
 Gradient: 5% to 95%B within 1.3 min
 Flow Rate :1.8ml/min
 Column :SunFire C18, 4.6*50mm,3.5um A-RP-698

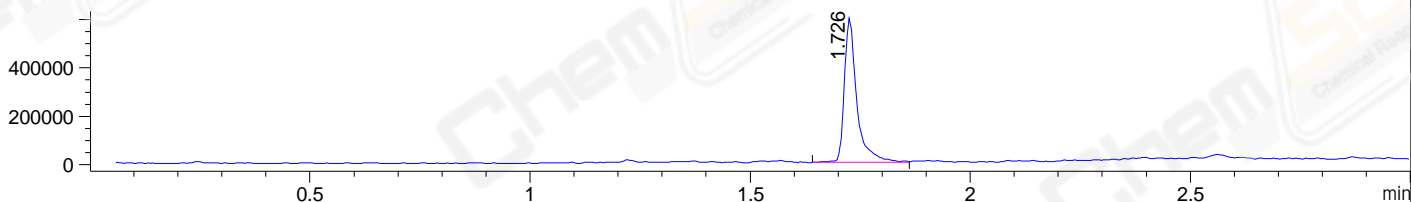
DAD1 B, Sig=214,4 Ref=off



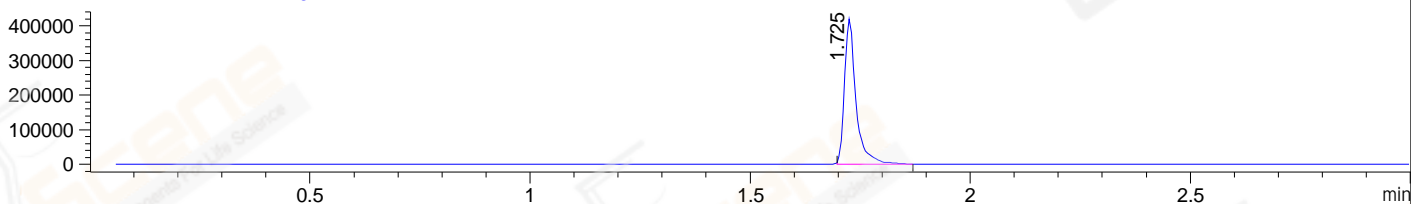
DAD1 C, Sig=254,4 Ref=off



MSD1 TIC, MS File ES-API, Pos, Scan, Frag: 70



Ion 444, MSD1 444, Target Mass 443 +H Positive, EIC=443.7:444.7



Integration Results for DAD1 B, Sig=214,4 Ref=off

RetTim	Width	Area	Height	Area%	MS(+)
1.66	0.01	5.19	5.56	0.48	ND
1.71	0.02	1065.46	1035.54	99.52	444

Integration Results for DAD1 C, Sig=254,4 Ref=off

RetTim	Width	Area	Height	Area%	MS(+)
1.66	0.02	3.28	3.47	0.33	ND
1.71	0.02	980.71	953.49	99.67	444

Integration Results for MSD1 TIC, MS File

RetTim	Width	Area	Height	Area%	MS(+)
1.73	0.03	1169474.38	595471.13	100.00	444

Ret. Time: 1.73

<<<< POSITIVE SPECTRA >>>>

ES-API Positive

