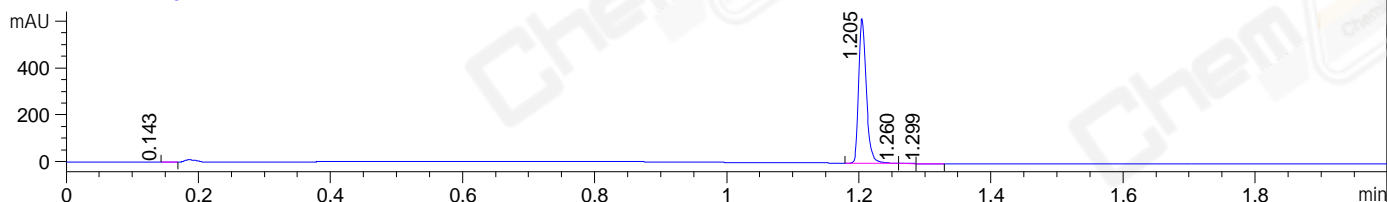
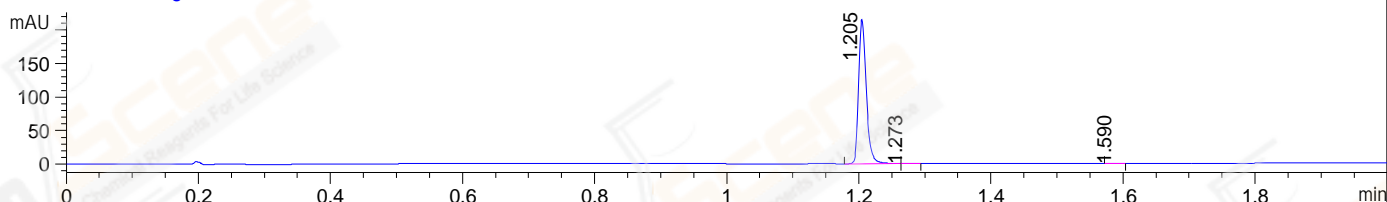


File ..\data\LXH\2021-06-10\WGY9640-006-6-015308.D Tgt Mass (EZ):
 Injection Date : 10 Jun 21 12:19 pm +0800 Seq. Line : 0
 CAS NO. : 220460-92-4 Location : P1-F-04
 Acq. Operator : LXH_1473 Inj : 1
 Spec. Reported : MS Integration Inj Volume : 0.2 ul
 Acq. Method : D:\LCMS\Methods\1-POS-UPLC2.0MIN(0.8ML)-(150-1000).M
 Analysis Method : D:\LCMS\METHODS\1-POS-UPLC2.0MIN(0.8ML)-(150-1000).M
 Sample Info : LD1107_1-20210610 Walkup method: '1-POS-2MIN' Target:
 Method Info : Mobile Phase: A: water(0.01%TFA) B:ACN(0.01%TFA)
 Gradient: 5% to 95%B within 0.6 min
 Flow Rate : 0.8ml/min
 Column : Poroshell 120 EC- C18, 2.1*50mm,1.9um A-RP-749
 Oven Temperature : 45C

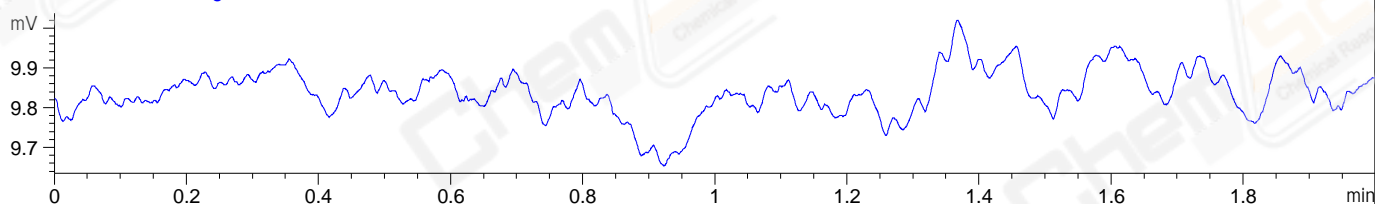
DAD1 A, Sig=214,4 Ref=off



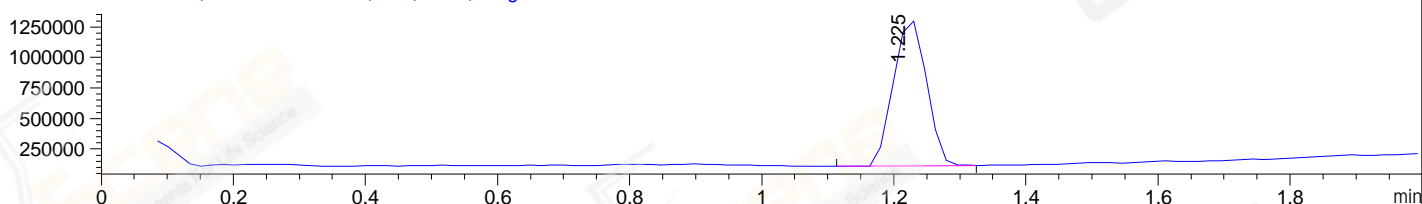
DAD1 B, Sig=254,4 Ref=off



ELS1 A, ELSD Signal



MSD1 TIC, MS File ES-API, Pos, Scan, Frag: 70



Integration Results for DAD1 A, Sig=214,4 Ref=off

RetTim	Width	Area	Height	Area%	MS (+)
0.14	0.01	0.24	0.01	0.05	161
1.20	0.01	499.99	620.38	99.73	403
1.26	0.01	0.62	0.67	0.12	827
1.30	0.03	0.50	0.33	0.10	161

Integration Results for DAD1 B, Sig=254,4 Ref=off

RetTim	Width	Area	Height	Area%	MS (+)
1.20	0.01	175.01	216.76	99.86	403
1.27	0.02	0.19	0.18	0.11	827
1.59	0.02	0.06	0.04	0.03	161

Integration Results for ELS1 A, ELSD Signal

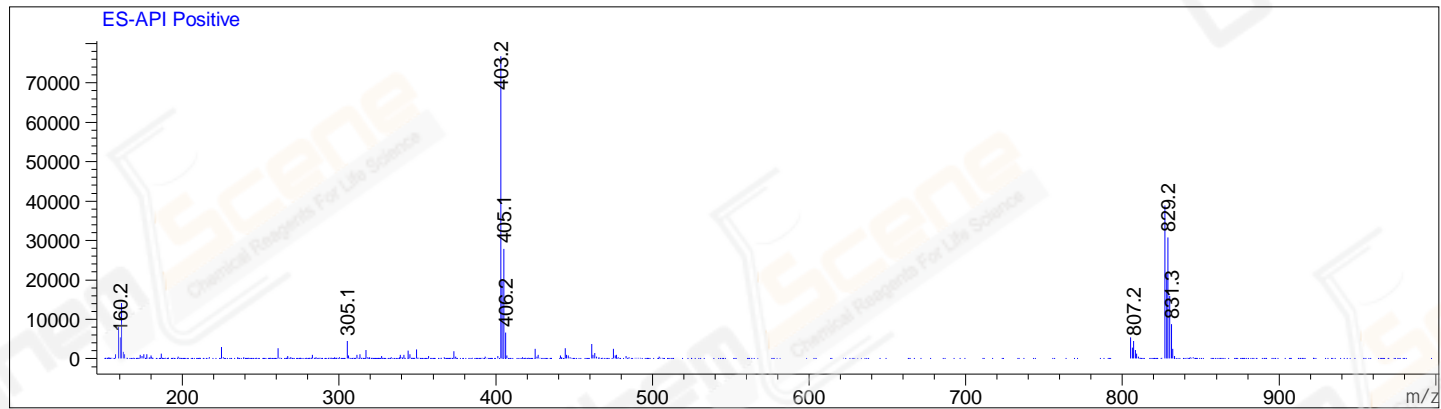
RetTim	Width	Area	Height	Area%	MS (+)
--------	-------	------	--------	-------	--------

Integration Results for MSD1 TIC, MS File

RetTim	Width	Area	Height	Area%	MS (+)
1.22	0.06	4172364.00	1211210.75	100.00	403

Ret. Time: 1.22

<<<< POSITIVE SPECTRA >>>>



*** End of Report ***