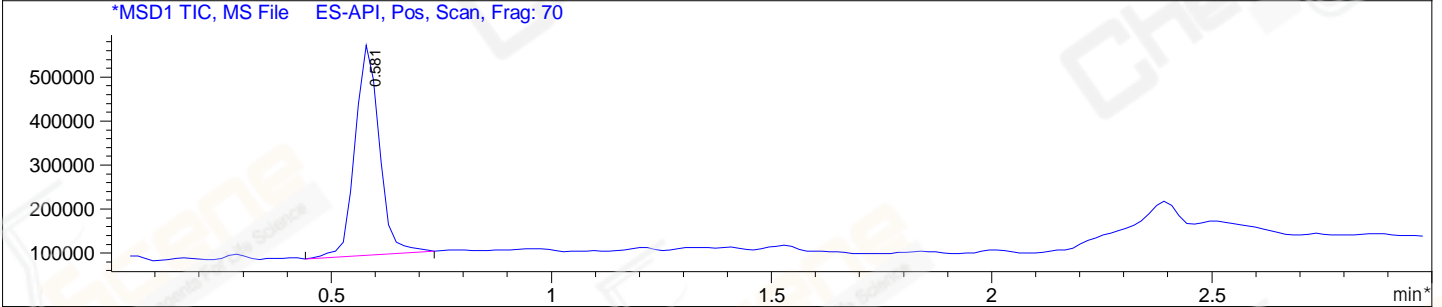
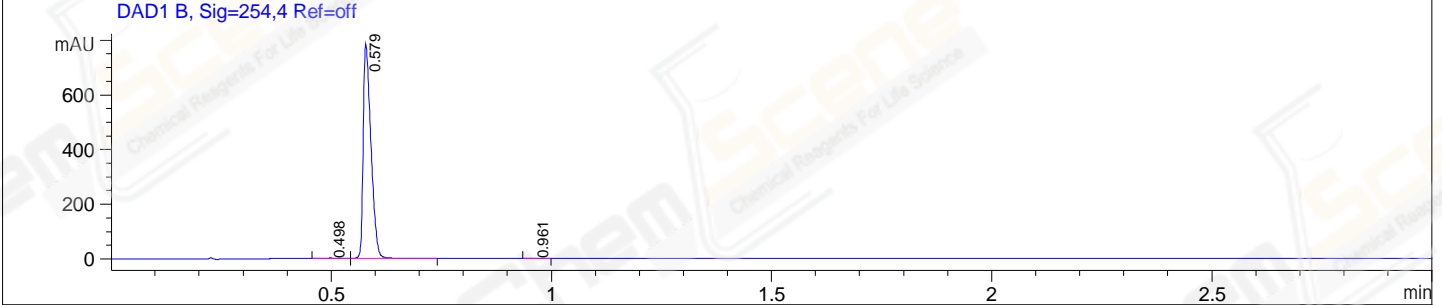
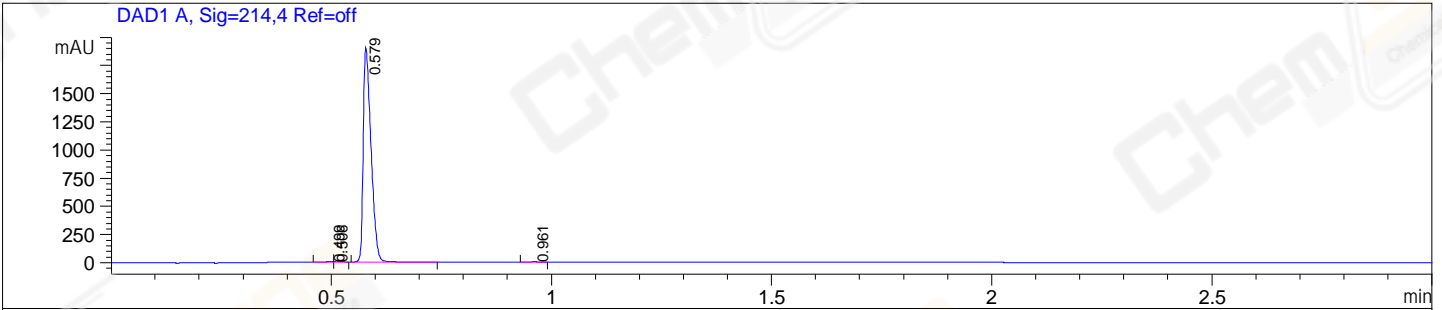


File E:\ChemStation\1\DATA\2024\2024-03\2024-03-20\CPK2024-319-10535-UPLC-MS-10-029435.D
 Injection Date : 20-Mar-24, 11:46:57 Tgt Mass(EZX) :
 Sample Name : CPK2024-319-10535 Location : P1-B-04
 Acq. Operator : LY_2278 Inj : 1
 Spec. Reported : MS Integration Inj Volume : 0.8 ul
 Acq. Method : E:\ChemStation\1\Methods\1-POS-UPLC3.0MIN(1.2)(150-1000).M
 Analysis Method : E:\CHEMSTATION\1\METHODS\1-POS-UPLC3.0MIN(1.2)(150-1000).M
 CAS NO. : 603272-51-1 WalkUp method: '1-POS-3MIN' Project: CPK2024
 Method Info : Mobile Phase: A: water(0.01%TFA) B:ACN(0.01%TFA)
 Gradient: 5% to 95%B within 2.0 min
 Flow Rate :1.2ml/min
 Column :Shim-pack Scepter C18-120, 3.0*33mm,3um
 Oven Temperature : 45C



Integration Results for DAD1 A, Sig=214,4 Ref=off

RetTim	Width	Area	Height	Area%
0.50	0.02	8.16	7.76	0.35
0.51	0.02	8.57	6.58	0.36
0.58	0.02	2338.84	1892.00	99.16
0.96	0.01	3.11	3.65	0.13

Integration Results for DAD1 B, Sig=254,4 Ref=off

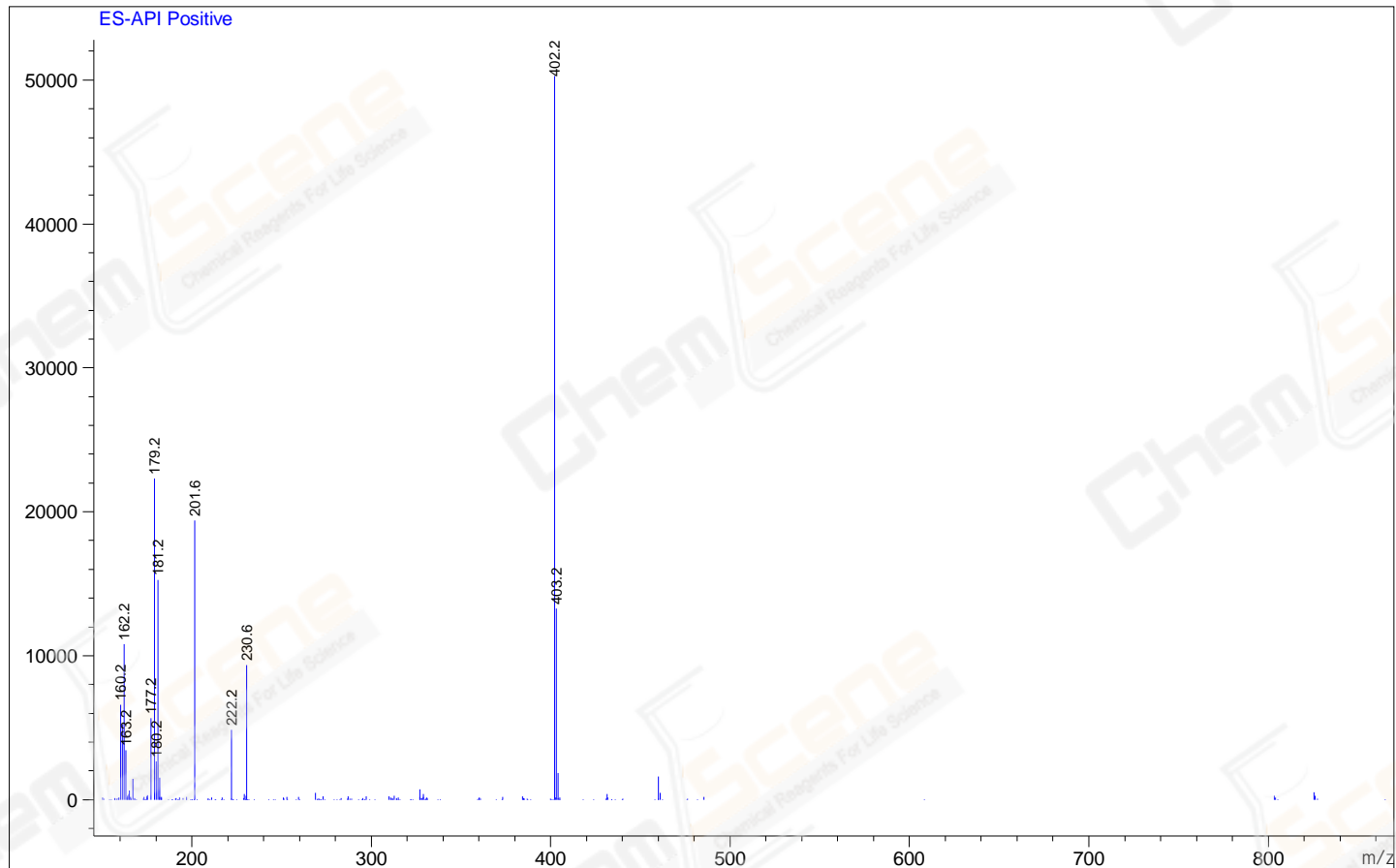
RetTim	Width	Area	Height	Area%
0.50	0.02	3.53	1.89	0.37
0.58	0.02	960.50	780.82	99.50
0.96	0.01	1.31	1.53	0.14

Integration Results for MSD1 TIC, MS File

RetTim	Width	Area	Height	Area%
0.58	0.06	1829441.13	478196.88	100.00

Ret. Time: 0.58

<<<< POSITIVE SPECTRA >>>>



*** End of Report ***