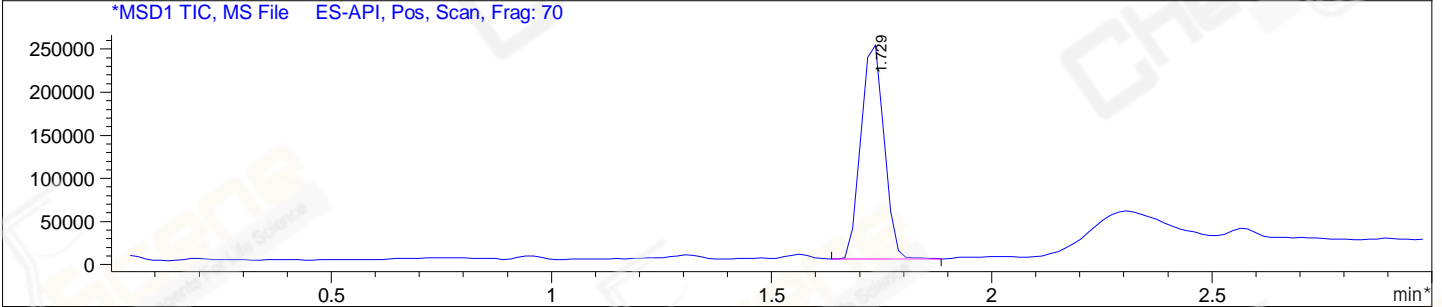
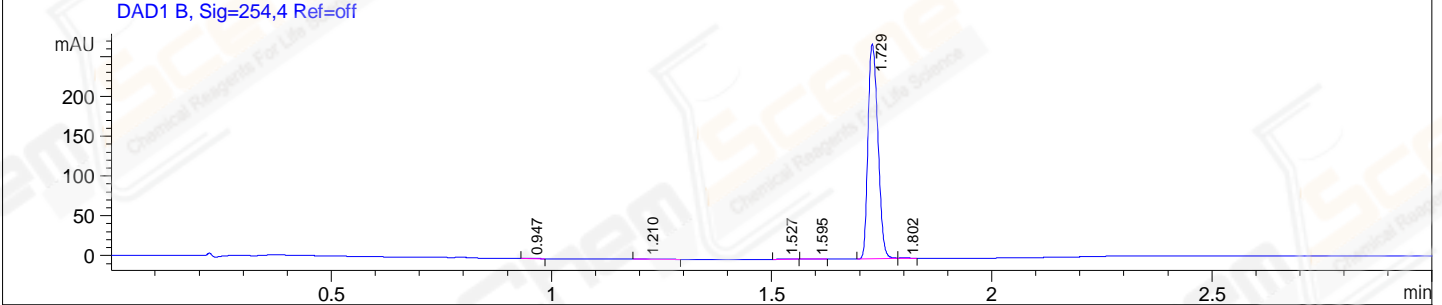
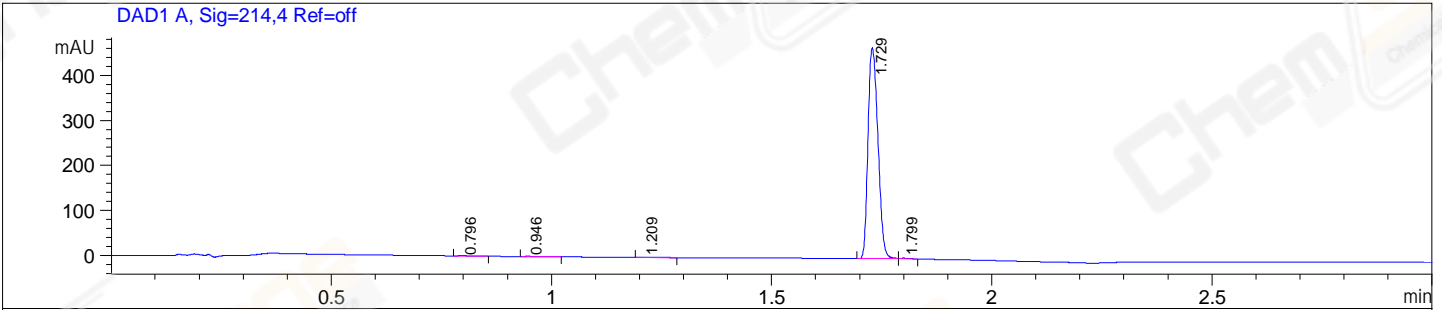


File E:\ChemStation\1\DATA\2024\2024-08\2024-08-27\CPK2024-826-106087-UPLC-MS-10-043069.D  
 Injection Date : 27-Aug-24, 17:30:10 Tgt Mass(EZX) :  
 Sample Name : CPK2024-826-106087 Location : P1-E-05  
 Acq. Operator : LY\_2278 Inj : 1  
 Spec. Reported : MS Integration Inj Volume : 0.8 ul  
 Acq. Method : E:\ChemStation\1\Methods\1-POS-UPLC3.0MIN(1.2)(150-1000).M  
 Analysis Method : E:\CHEMSTATION\1\METHODS\1-POS-UPLC3.0MIN(1.2)(150-1000).M  
 CAS NO. : 114727-43-4 WalkUp method: '1-POS-3MIN' Project: CPK2024  
 Method Info : Mobile Phase: A: water(0.01%TFA) B:ACN(0.01%TFA)  
 Gradient: 5% to 95%B within 2.0 min  
 Flow Rate :1.2ml/min  
 Column :Shim-pack Scepter C18-120, 3.0\*33mm,3um  
 Oven Temperature : 45C



Integration Results for DAD1 A, Sig=214,4 Ref=off

RetTim	Width	Area	Height	Area%
0.80	0.02	1.29	0.87	0.17
0.95	0.02	0.90	0.67	0.12
1.21	0.02	0.78	0.50	0.11
1.73	0.03	732.33	467.82	99.45
1.80	0.02	1.06	0.73	0.14

Integration Results for DAD1 B, Sig=254,4 Ref=off

RetTim	Width	Area	Height	Area%
0.95	0.02	0.49	0.41	0.12
1.21	0.02	1.02	0.63	0.24
1.53	0.03	0.36	0.23	0.09
1.60	0.02	0.25	0.15	0.06
1.73	0.03	420.54	269.32	99.31
1.80	0.02	0.81	0.61	0.19

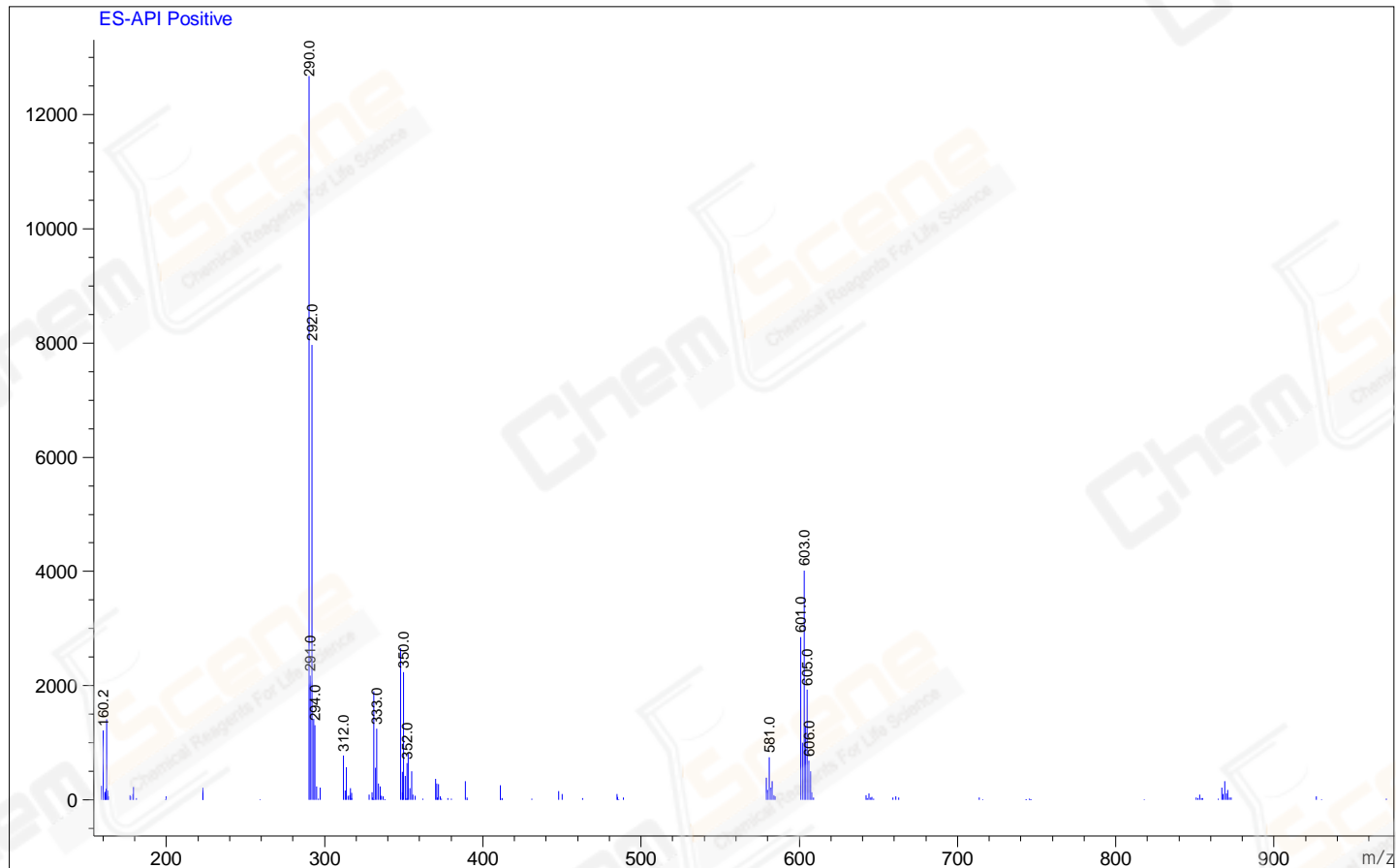
Integration Results for MSD1 TIC, MS File



RetTim	Width	Area	Height	Area%
--------	-------	------	--------	-------

Ret. Time: 1.73

<<<< POSITIVE SPECTRA >>>>



\*\*\* End of Report \*\*\*