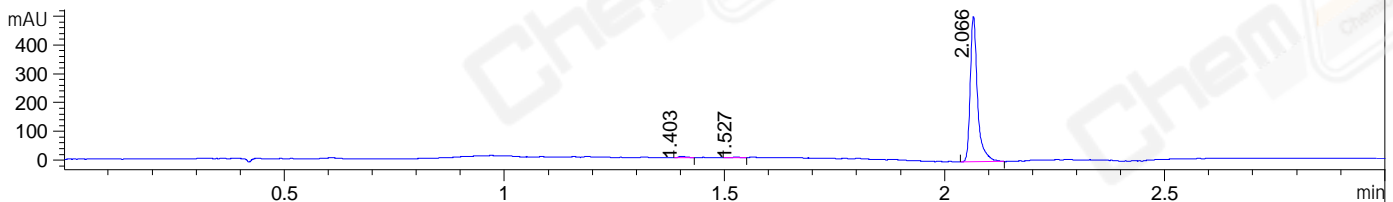
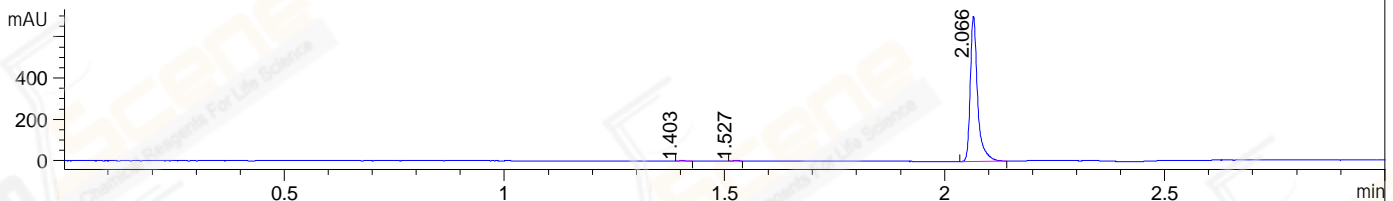


File ..\DATA\2020\20200411\921\CPK2020-409-10809.D Tgt Mass (CHM):  
Injection Date : 11 Apr 20 12:54 pm +0800 Seq. Line : 30  
Sample Name : CPK2020-409-10809 Location : P1-D-06  
Acq. Operator : ZJ\_1432 Inj : 1  
Spec. Reported : MS Integration Inj Volume : 0.5 ul  
Acq. Method : D:\Chem32\1\data\2020\20200411\921\1-POS-3MIN.M  
Analysis Method : D:\CHEM32\1\DATA\2020\20200411\921\1-POS-3MIN.M  
Catalog No : CS-0581 Batch# 10809  
Method Info : Mobile Phase: A: water(0.01%TFA) B:ACN(0.01%TFA)  
Gradient: 5% to 95%B within 1.3 min  
Flow Rate :1.8ml/min  
Column :SunFire C18, 4.6\*50mm,3.5um A-RP-433  
Oven Temperature : 45

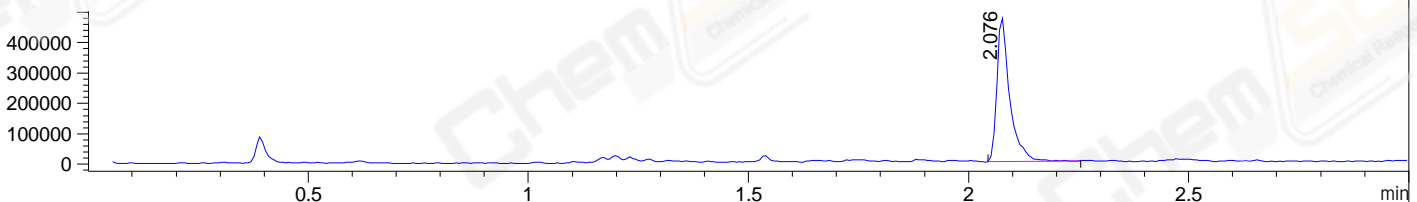
DAD1 B, Sig=214,4 Ref=off



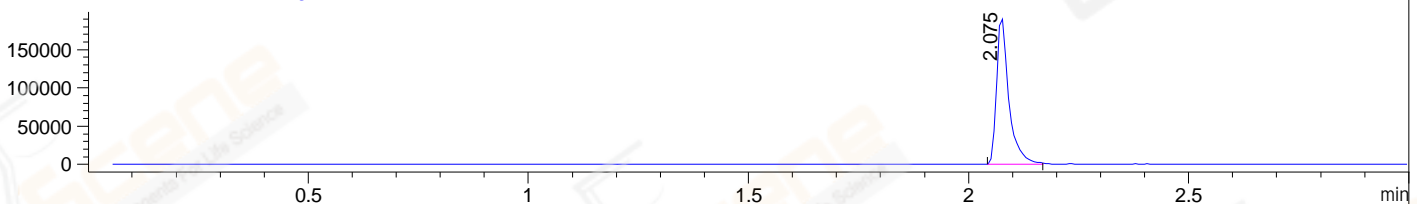
DAD1 C, Sig=254,4 Ref=off



MSD1 TIC, MS File ES-API, Pos, Scan, Frag: 70



Ion 457, MSD1 457, Target Mass 456 +H Positive, EIC=456.7:457.7



Integration Results for DAD1 B, Sig=214,4 Ref=off

RetTim	Width	Area	Height	Area%	MS (+)
1.40	0.02	4.66	4.85	0.79	130
1.53	0.02	3.23	2.53	0.55	485
2.07	0.02	579.07	506.25	98.65	457

Integration Results for DAD1 C, Sig=254,4 Ref=off

RetTim	Width	Area	Height	Area%	MS (+)
1.40	0.01	2.70	3.01	0.33	130
1.53	0.01	2.65	3.55	0.33	485
2.07	0.02	807.89	702.73	99.34	457

Integration Results for MSD1 TIC, MS File

RetTim	Width	Area	Height	Area%	MS (+)
2.08	0.03	961504.25	475059.25	100.00	457

Ret. Time: 2.08

<<<< POSITIVE SPECTRA >>>>

ES-API Positive

