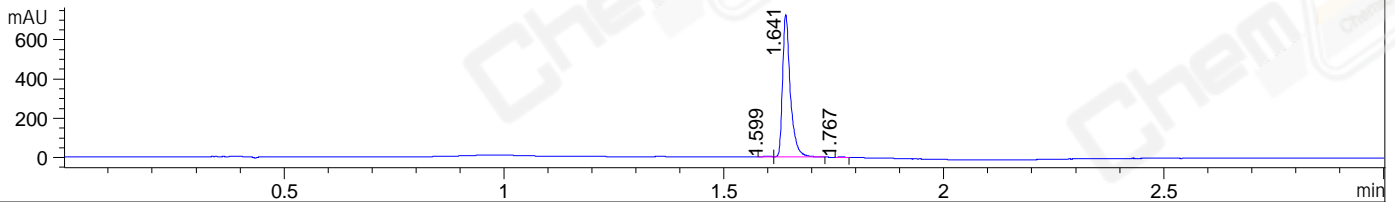
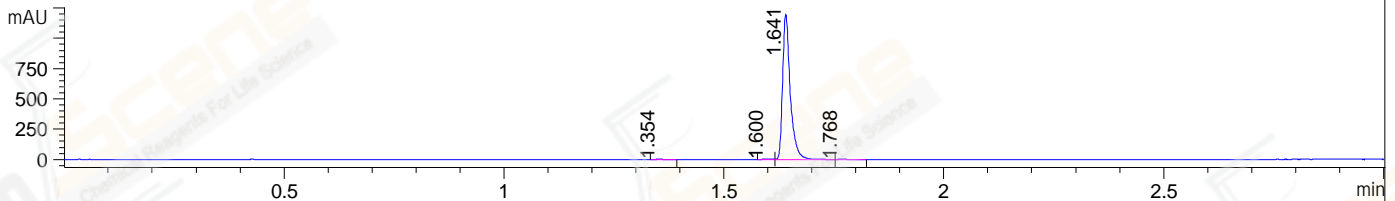


File ..\DATA\2019\20191113\758\CPK2019-N11-10831.D Tgt Mass (CHM):  
Injection Date : 13 Nov 19 5:52 pm +0800 Seq. Line : 110  
Sample Name : CPK2019-N11-10831 Location : P1-D-03  
Acq. Operator : ZJ\_1432 Inj : 1  
Spec. Reported : MS Integration Inj Volume : 1 ul  
Acq. Method : D:\Chem32\1\data\2019\20191113\758\1-POS-3MIN.M  
Analysis Method : D:\CHEM32\1\DATA\2019\20191113\758\1-POS-3MIN.M  
Catalog No : CS-0454 Batch#10831  
Method Info : Mobile Phase: A: water(0.01%TFA) B:ACN(0.01%TFA)  
Gradient: 5% to 95%B within 1.3 min  
Flow Rate :1.8ml/min  
Column :SunFire C18, 4.6\*50mm,3.5um A-RP-433  
Oven Temperature : 45□

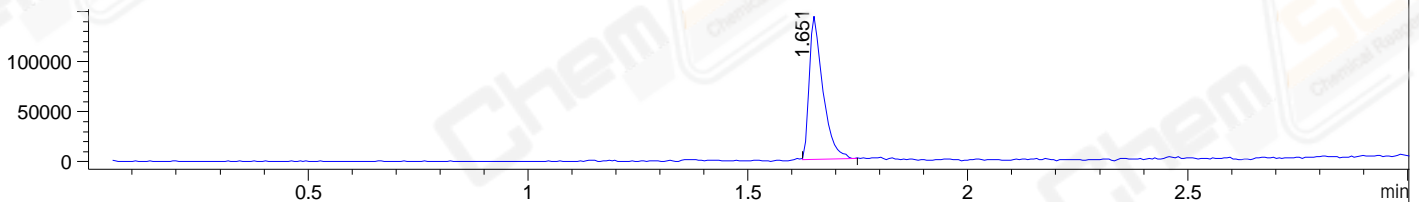
DAD1 B, Sig=214,4 Ref=off



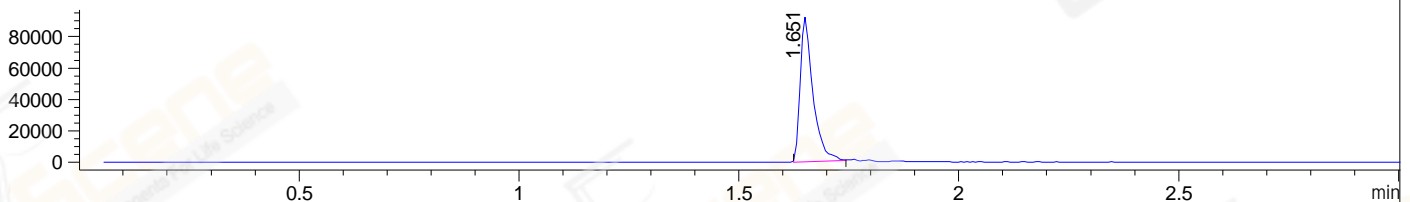
DAD1 C, Sig=254,4 Ref=off



MSD1 TIC, MS File ES-API, Pos, Scan, Frag: 70



Ion 420, MSD1 420, Target Mass 419 +H Positive, EIC=419.7:420.7



Integration Results for DAD1 B, Sig=214,4 Ref=off

RetTim	Width	Area	Height	Area%	MS (+)
1.60	0.02	4.61	3.41	0.51	ND
1.64	0.02	890.14	726.67	99.25	420
1.77	0.01	2.14	2.48	0.24	420

Integration Results for DAD1 C, Sig=254,4 Ref=off

RetTim	Width	Area	Height	Area%	MS (+)
1.35	0.02	4.27	3.25	0.29	ND
1.60	0.03	7.73	4.78	0.52	ND
1.64	0.02	1459.36	1201.08	98.70	420
1.77	0.03	7.19	4.38	0.49	420

Integration Results for MSD1 TIC, MS File

RetTim	Width	Area	Height	Area%	MS (+)
1.65	0.03	311797.16	143338.30	100.00	420

Ret. Time: 1.65

<<<< POSITIVE SPECTRA >>>>

ES-API Positive

