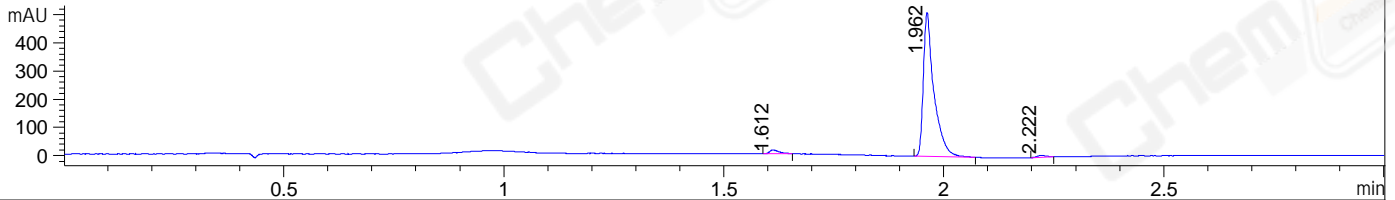
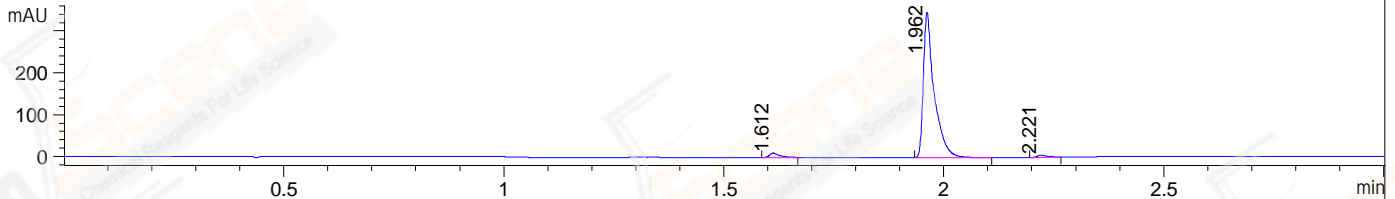


File ..\DATA\2019\20191211\790\CPK2019-D11-10833.D Tgt Mass (CHM):
 Injection Date : 11 Dec 19 6:22 pm +0800 Seq. Line : 125
 Sample Name : CPK2019-D11-10833 Location : P1-C-05
 Acq. Operator : ZJ_1432 Inj : 1
 Spec. Reported : MS Integration Inj Volume : 1 ul
 Acq. Method : D:\Chem32\1\data\2019\20191211\790\1-POS-3MIN.M
 Analysis Method : D:\CHEM32\1\DATA\2019\20191211\790\1-POS-3MIN.M
 CAS NO. : 518-82-1
 Method Info : Mobile Phase: A: water(0.01%TFA) B:ACN(0.01%TFA)
 Gradient: 5% to 95%B within 1.3 min
 Flow Rate :1.8ml/min
 Column :SunFire C18, 4.6*50mm,3.5um A-RP-433
 Oven Temperature : 45□

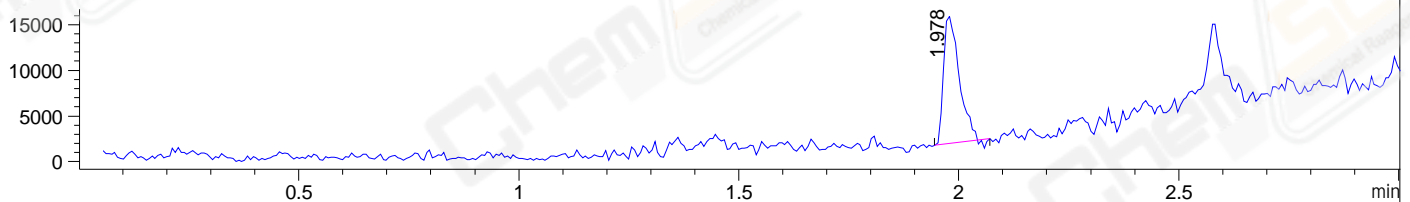
DAD1 B, Sig=214,4 Ref=off



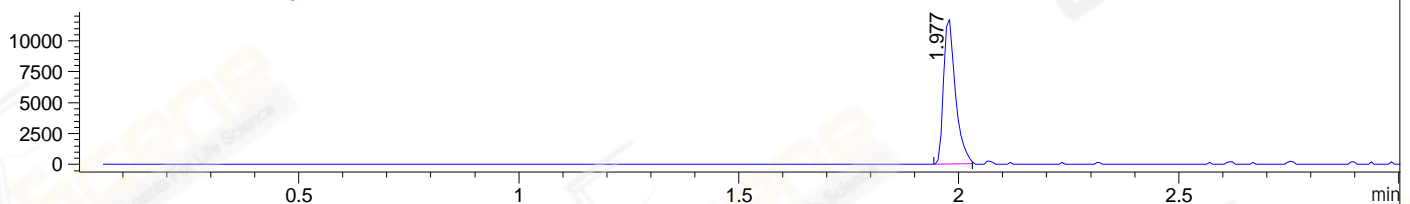
DAD1 C, Sig=254,4 Ref=off



MSD1 TIC, MS File ES-API, Pos, Scan, Frag: 70



Ion 271, MSD1 271, Target Mass 270 +H Positive, EIC=270.7:271.7



Integration Results for DAD1 B, Sig=214,4 Ref=off

RetTim	Width	Area	Height	Area%	MS(+)
1.61	0.02	20.30	13.95	2.30	ND
1.96	0.03	852.66	511.56	96.53	271
2.22	0.02	10.37	7.21	1.17	116

Integration Results for DAD1 C, Sig=254,4 Ref=off

RetTim	Width	Area	Height	Area%	MS(+)
1.61	0.03	16.30	10.68	2.63	ND
1.96	0.03	594.53	347.86	96.00	271
2.22	0.03	8.50	5.37	1.37	116

Integration Results for MSD1 TIC, MS File

RetTim	Width	Area	Height	Area%	MS(+)
1.98	0.03	34211.11	14029.42	100.00	271

Ret. Time: 1.98

<<<< POSITIVE SPECTRA >>>>

ES-API Positive

