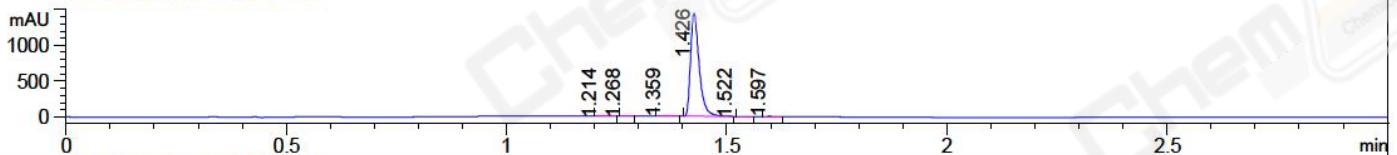
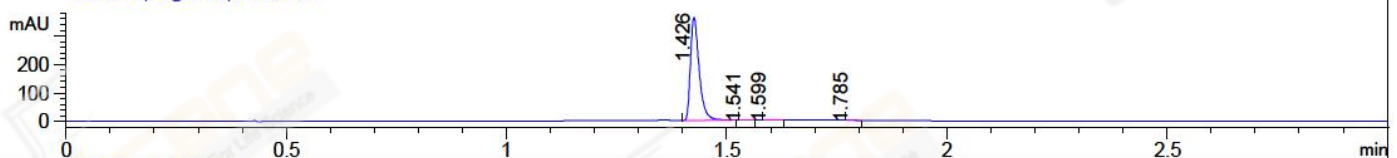


File ..\Data\20180111\20180111\CPK2018-111-10862.D Tgt Mass (CHM):
Injection Date : 11 Jan 18 7:36 pm +0800 Seq. Line : 128
Sample Name : CPK2018-111-10862 Location : P2-F-05
Acq. Operator : SYSTEM Inj : 1
Spec. Reported : MS Integration Inj Volume : 1 ul
Acq. Method : D:\LCMS03\Data\20180111\20180111\1-POS-3MIN.M
Analysis Method : D:\LCMS03\Data\20180111\20180111\1-POS-3MIN.M
Catalog No : CS-1398 Batch#10862
Method Info : Mobile Phase: A: water(0.01%TFA) B:ACN(0.01%TFA)
Gradient: 5% to 95%B within 1.3 min
Flow Rate :1.8ml/min
Column :SunFire C18, 4.6*50mm,3.5um A-RP-186
Oven Temperature : 45C

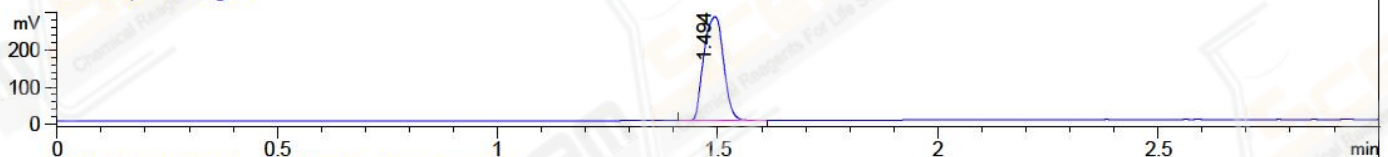
DAD1 A, Sig=214,4 Ref=off



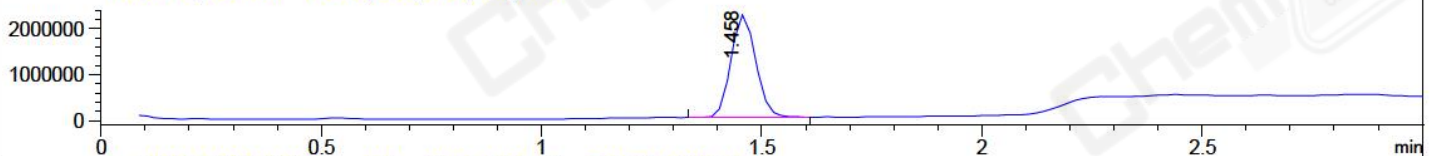
DAD1 B, Sig=254,4 Ref=off



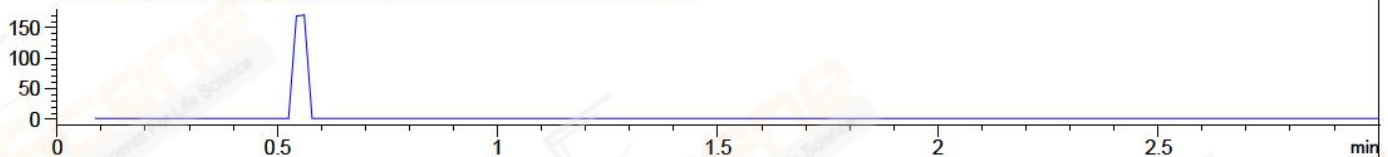
ELS1 A, ELSD Signal



MSD1 TIC, MS File ES-API, Pos, Scan, Frag: 70



Ion 724.9, MSD1 724.9, Target Mass 723.9 +H Positive, EIC=724.6:725.6



Integration Results for DAD1 A, Sig=214,4 Ref=off

| RetTim | Width | Area | Height | Area% | MS (+) |
|--------|-------|---------|---------|-------|--------|
| 1.21 | 0.02 | 0.98 | 0.74 | 0.05 | 174 |
| 1.27 | 0.02 | 0.63 | 0.57 | 0.03 | 174 |
| 1.36 | 0.02 | 5.70 | 4.92 | 0.29 | 174 |
| 1.43 | 0.02 | 1947.07 | 1429.55 | 99.40 | 315 |
| 1.52 | 0.02 | 0.75 | 0.50 | 0.04 | 315 |
| 1.60 | 0.02 | 3.78 | 3.85 | 0.19 | 105 |

Integration Results for DAD1 B, Sig=254,4 Ref=off

| RetTim | Width | Area | Height | Area% | MS (+) |
|--------|-------|--------|--------|-------|--------|
| 1.43 | 0.02 | 495.05 | 361.03 | 99.60 | 315 |
| 1.54 | 0.02 | 0.16 | 0.14 | 0.03 | 315 |
| 1.60 | 0.02 | 1.57 | 1.23 | 0.32 | 105 |
| 1.78 | 0.02 | 0.24 | 0.19 | 0.05 | 105 |

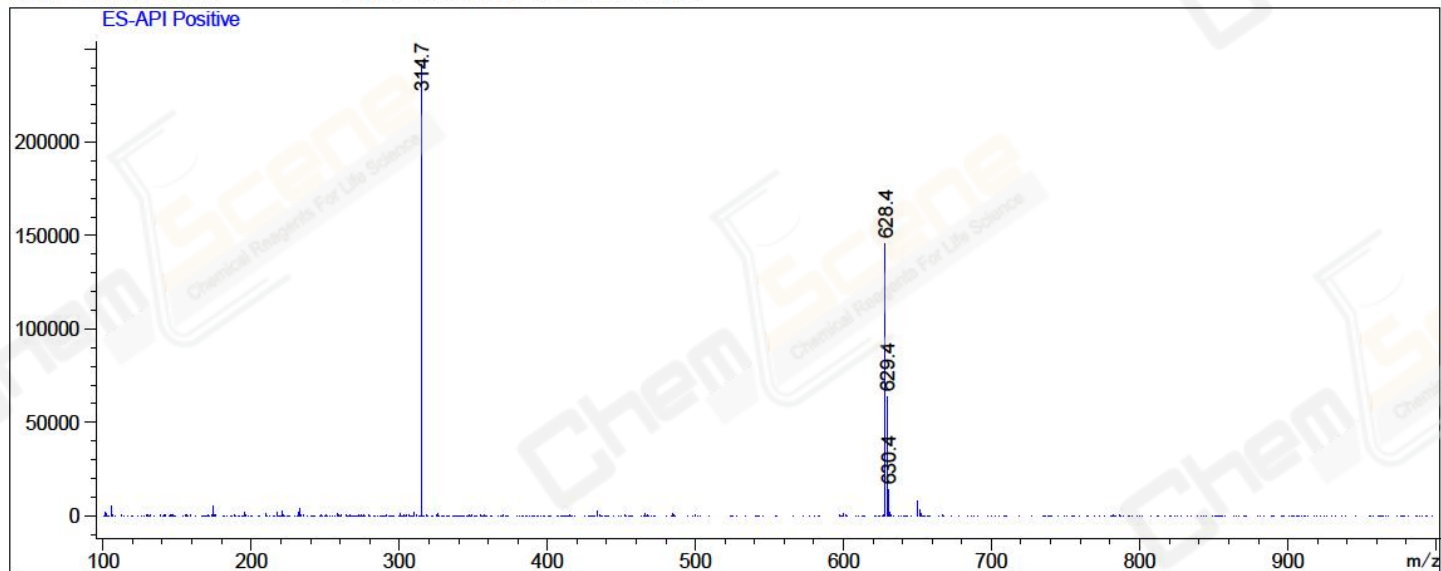
Integration Results for MSD1 TIC, MS File

| RetTim | Width | Area | Height | Area% | MS (+) |
|--------|-------|------|--------|-------|--------|
|--------|-------|------|--------|-------|--------|

-----|-----|-----|-----|-----|-----|
1.46 0.06 8718031.00 2225525.75 100.00 315

Ret. Time: 1.46

<<<< POSITIVE SPECTRA >>>>



*** End of Report ***