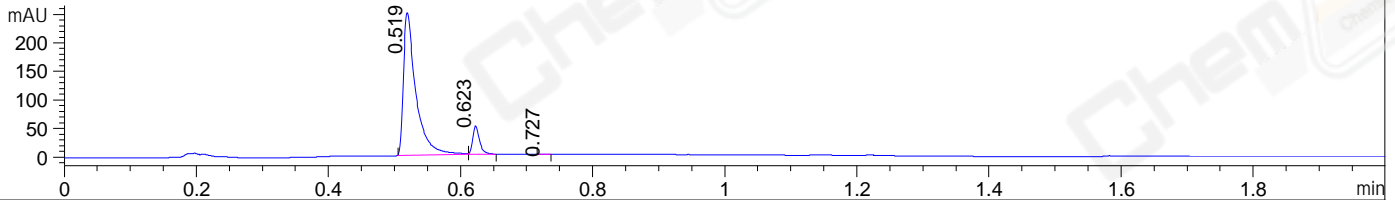


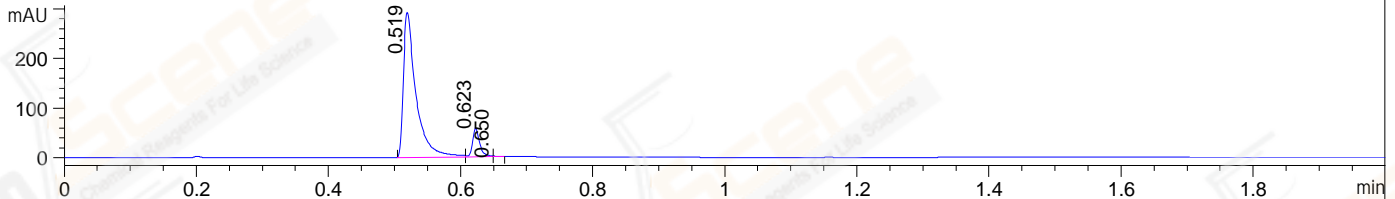
File ..a\LY\2021-07-13\BIZ2021-708-SCH5-1-018936.D Tgt Mass (EZ):
 Injection Date : 13 Jul 21 10:05 pm +0800 Seq. Line : 0
 Sample Name : BIZ2021-708-SCH5-1 Location : P1-A-05
 Acq. Operator : LY_2278 Inj : 1
 Spec. Reported : MS Integration Inj Volume : 0.2 ul
 Acq. Method : D:\LCMS\Methods\1-POS-UPLC2.0MIN(0.8ML)-(150-1000).M
 Analysis Method : D:\LCMS\METHODS\1-POS-UPLC15.0MIN(0.8ML).M
 CAS NO. : 400827-46-5
 Method Info : Mobile Phase: A: water(0.01%TFA) B:ACN(0.01%TFA)

Flow Rate :0.8ml/min
 Column :Poroshell 120 EC- C18, 2.1*50mm,1.9um A-RP-749
 Oven Temperature : 45C

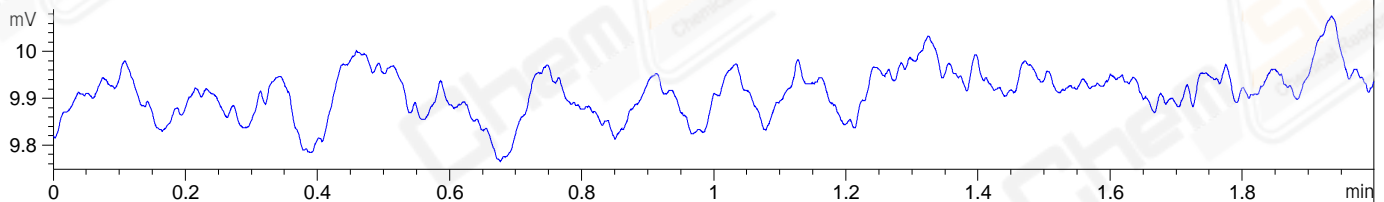
DAD1 A, Sig=214,4 Ref=off



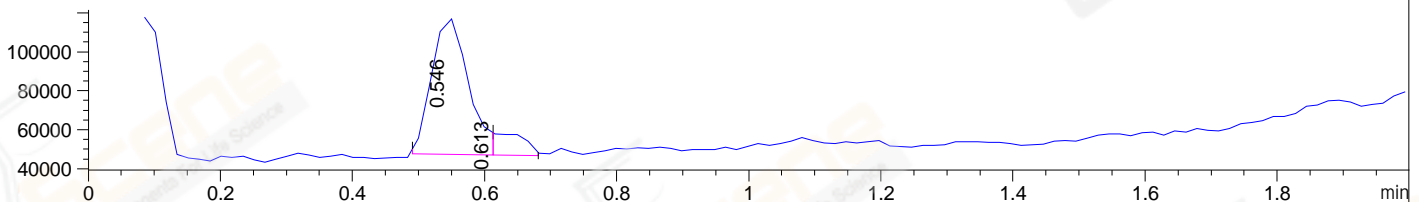
DAD1 B, Sig=254,4 Ref=off



ELS1 A, ELSD Signal



MSD1 TIC, MS File ES-API, Pos, Scan, Frag: 70



Integration Results for DAD1 A, Sig=214,4 Ref=off

RetTim	Width	Area	Height	Area%	MS (+)
0.52	0.02	328.75	251.26	90.17	685
0.62	0.01	35.76	50.59	9.81	161
0.73	0.01	0.09	0.18	0.03	161

Integration Results for DAD1 B, Sig=254,4 Ref=off

RetTim	Width	Area	Height	Area%	MS (+)
0.52	0.02	383.42	292.51	89.90	685
0.62	0.01	42.71	57.96	10.01	161
0.65	0.01	0.37	0.89	0.09	161

Integration Results for ELS1 A, ELSD Signal

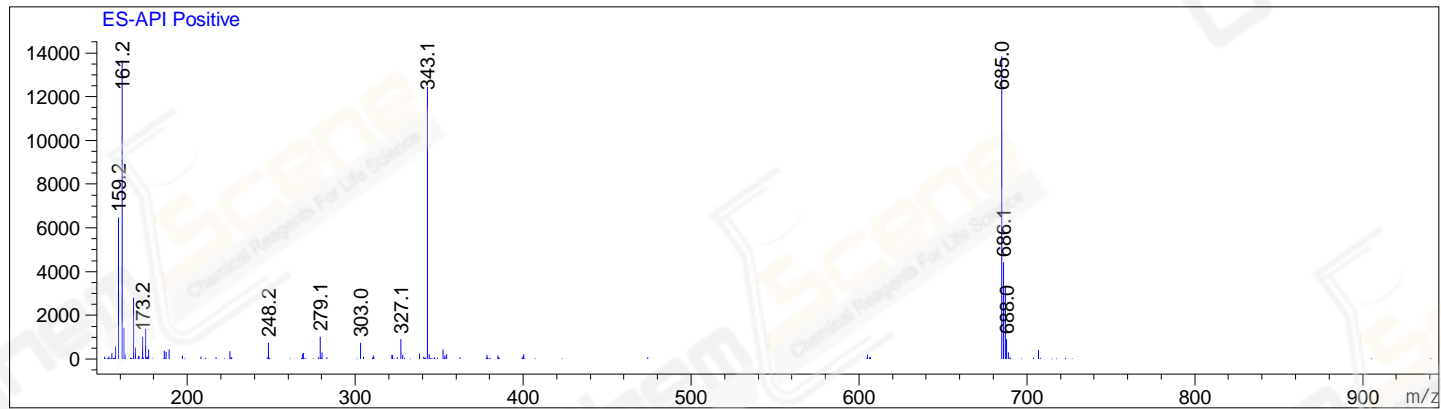
RetTim	Width	Area	Height	Area%	MS (+)
--------	-------	------	--------	-------	--------

Integration Results for MSD1 TIC, MS File

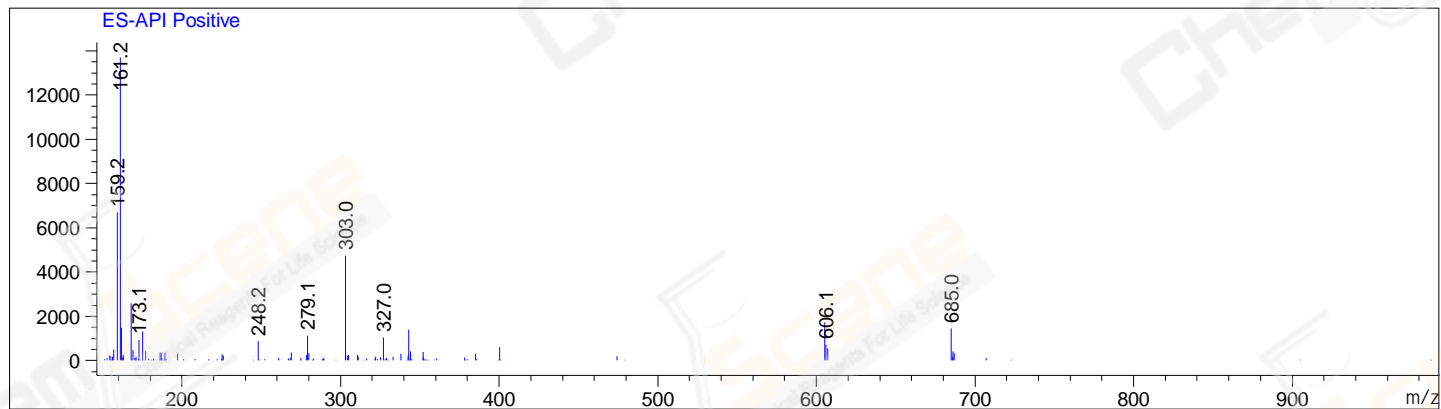
0.55	0.06	270024.22	71224.80	89.39	685
0.61	0.05	32048.33	10968.22	10.61	161

RetTim	Width	Area	Height	Area%	MS(+)
--------	-------	------	--------	-------	-------

Ret. Time: 0.55 <<<< POSITIVE SPECTRA >>>>



Ret. Time: 0.61



*** End of Report ***