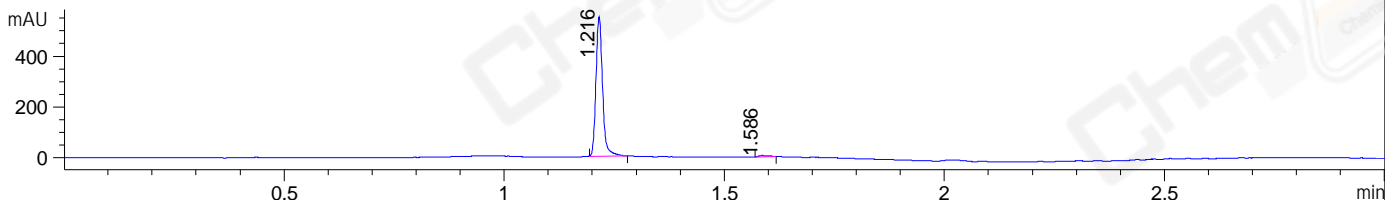
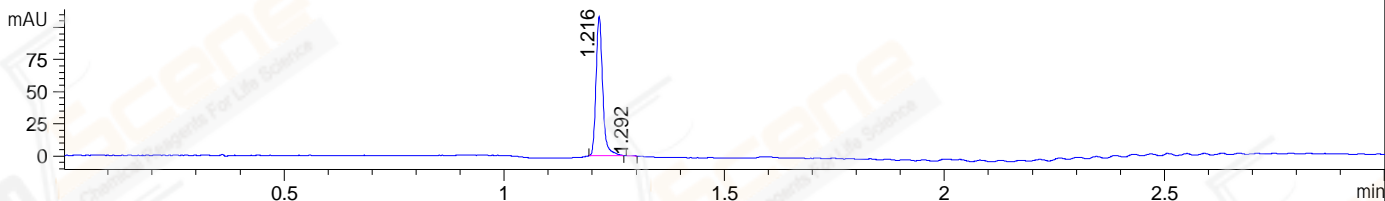


File ..DATA\2021\20210420\1357 1\LJC202104200091.D Tgt Mass (CHM):  
 Injection Date : 20 Apr 21 7:58 pm +0800 Seq. Line : 53  
 Sample Name : LJC202104200091 Location : P2-D-06  
 Acq. Operator : yrz\_1364 Inj : 1  
 Spec. Reported : MS Integration Inj Volume : 0.15 ul  
 Acq. Method : D:\Chem32\1\data\2021\20210420\1357 1\1-POS-3MIN.M  
 Analysis Method : D:\CHEM32\1\DATA\2021\20210420\1357 1\1-POS-3MIN.M  
 CAS NO. : 3131-52-0  
 Method Info : Mobile Phase: A: water(0.01%TFA) B:ACN(0.01%TFA)  
 Gradient: 5% to 95%B within 1.3 min  
 Flow Rate :1.8ml/min  
 Column :SunFire C18, 4.6\*50mm,3.5um A-RP-698

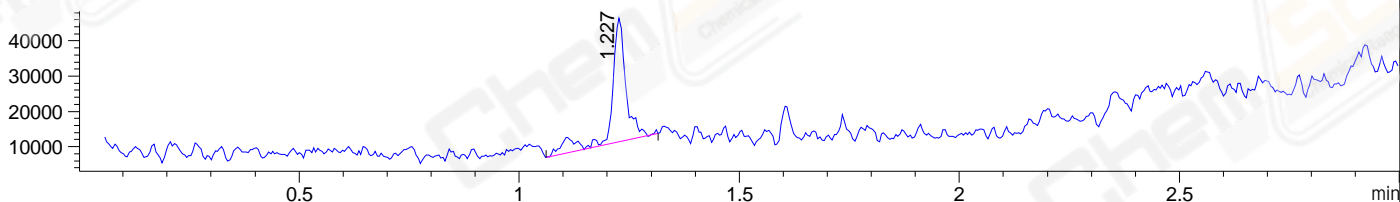
DAD1 B, Sig=214,4 Ref=off



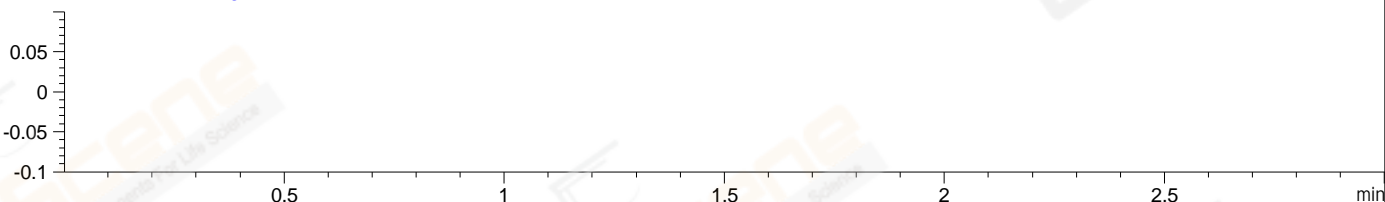
DAD1 C, Sig=254,4 Ref=off



MSD1 TIC, MS File ES-API, Pos, Scan, Frag: 70



Ion 1, MSD1 1, Target Mass 0 +H Positive, EIC=0.7:1.7



Integration Results for DAD1 B, Sig=214,4 Ref=off

RetTim	Width	Area	Height	Area%	MS(+)
1.22	0.02	574.07	550.32	98.74	589
1.59	0.02	7.31	5.04	1.26	472

Integration Results for DAD1 C, Sig=254,4 Ref=off

RetTim	Width	Area	Height	Area%	MS(+)
1.22	0.02	113.98	108.44	99.53	589
1.29	0.02	0.54	0.54	0.47	ND

Integration Results for MSD1 TIC, MS File

RetTim	Width	Area	Height	Area%	MS(+)
1.23	0.03	79678.66	34978.66	100.00	ND

MS Spectrum

MSD1 SPC, time=1.232 of D:\CHEM32\1\DATA\2021\20210420\1357 1\LJC202104200091.D ES-API, Pos, Scan, Frag: 70

