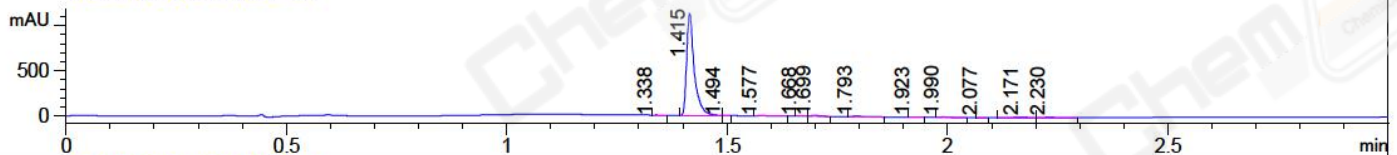
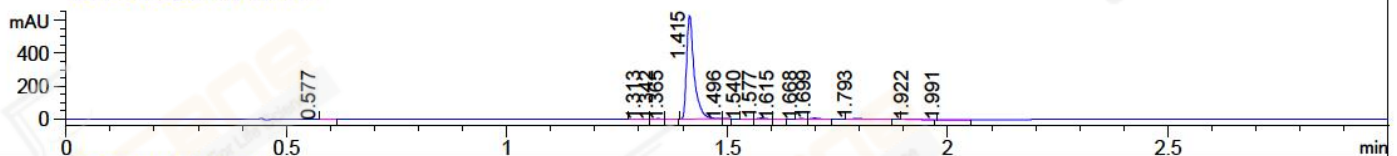


File ..018\20180517\20180517-1\CPK2018-517-11044.D Tgt Mass (CHM):  
Injection Date : 17 May 18 6:15 pm +0800 Seq. Line : 111  
Sample Name : CPK2018-517-11044 Location : P2-D-06  
Acq. Operator : SYSTEM Inj : 1  
Spec. Reported : MS Integration Inj Volume : 1 ul  
Acq. Method : D:\LCMS03\Data\2018\20180517\20180517-1\1-POS-3MIN.M  
Analysis Method : D:\LCMS03\Data\2018\20180517\20180517-1\1-POS-3MIN.M  
Catalog No : CS-2238 Batch#11044  
Method Info : Mobile Phase: A: water(0.01%TFA) B:ACN(0.01%TFA)  
Gradient: 5% to 95%B within 1.3 min  
Flow Rate :1.8ml/min  
Column :SunFire C18, 4.6\*50mm,3.5um A-RP-186  
Oven Temperature : 45C

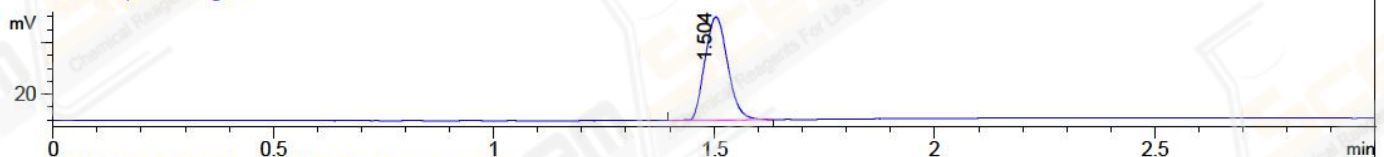
DAD1 A, Sig=214,4 Ref=off



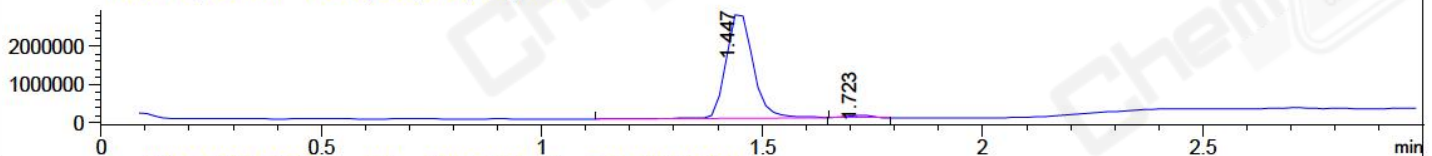
DAD1 B, Sig=254,4 Ref=off



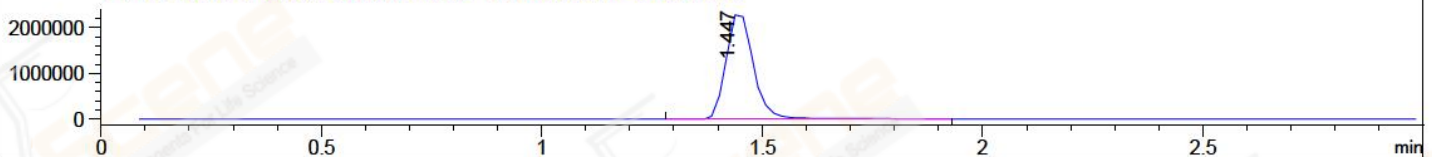
ELS1 A, ELSD Signal



MSD1 TIC, MS File ES-API, Pos, Scan, Frag: 70



Ion 429.5, MSD1 429.5, Target Mass 428.5 +H Positive, EIC=429.2:430.2



Integration Results for DAD1 A, Sig=214,4 Ref=off

RetTim	Width	Area	Height	Area%	MS (+)
1.34	0.02	0.56	0.59	0.04	233
1.41	0.02	1355.15	1126.59	96.13	429
1.49	0.01	0.68	0.88	0.05	429
1.58	0.02	8.18	6.78	0.58	429
1.67	0.01	1.44	1.91	0.10	233
1.70	0.02	12.43	11.89	0.88	233
1.79	0.02	9.12	7.63	0.65	233
1.92	0.02	1.03	0.96	0.07	233
1.99	0.02	7.32	6.52	0.52	233
2.08	0.01	0.36	0.42	0.03	233
2.17	0.02	8.43	4.73	0.60	233
2.23	0.02	5.08	3.41	0.36	233

Integration Results for DAD1 B, Sig=254,4 Ref=off

RetTim	Width	Area	Height	Area%	MS (+)
0.58	0.02	0.60	0.00	0.08	279
1.31	0.01	0.20	0.24	0.03	102

1.34	0.02	0.98	1.02	0.13	102
1.37	0.01	0.10	0.12	0.01	429
1.41	0.02	746.05	622.02	97.03	429
1.50	0.01	0.40	0.57	0.05	429
1.54	0.01	0.15	0.16	0.02	429
1.58	0.02	5.05	5.08	0.66	429
1.61	0.01	0.30	0.33	0.04	429
1.67	0.01	0.82	1.06	0.11	233
1.70	0.02	4.93	4.84	0.64	233
1.79	0.02	7.50	5.83	0.98	233
1.92	0.02	1.20	0.79	0.16	233
1.99	0.03	0.62	0.31	0.08	233

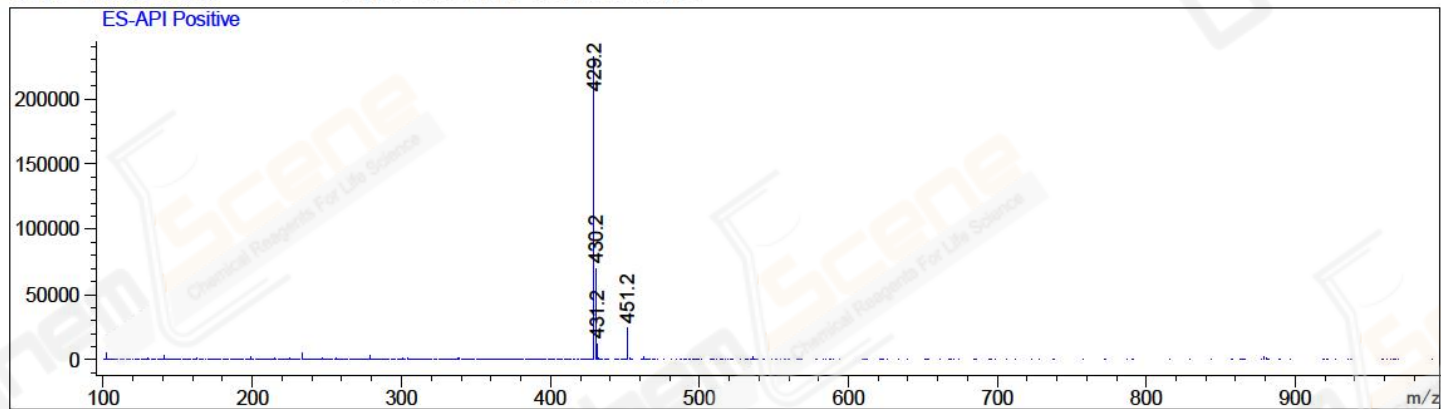
## Integration Results for ELS1 A, ELSD Signal

RetTim	Width	Area	Height	Area%	MS (+)
1.50	0.06	142.97	40.01	100.00	429

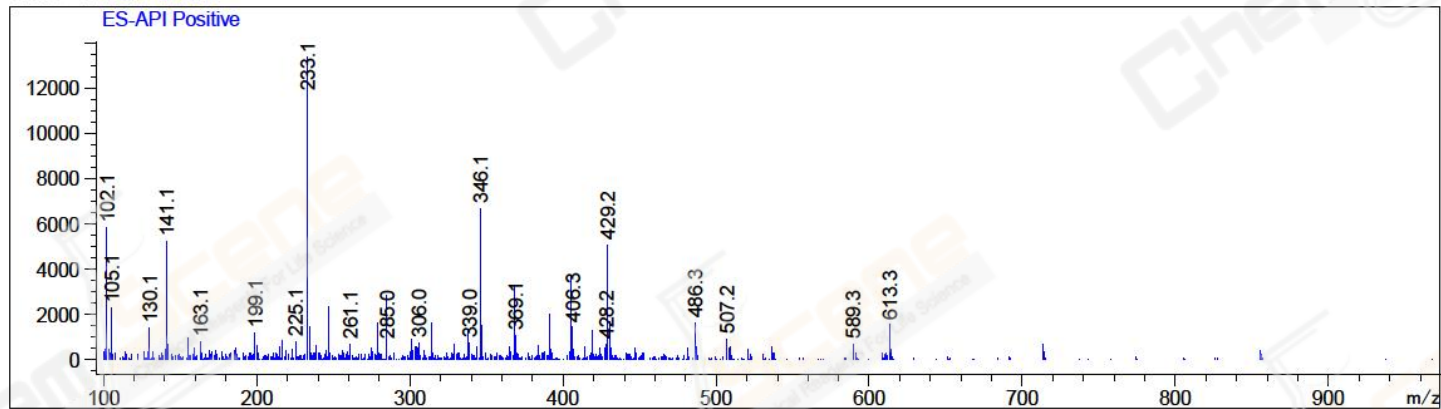
## Integration Results for MSD1 TIC, MS File

RetTim	Width	Area	Height	Area%	MS (+)
1.45	0.07	11587788.00	2803084.00	97.91	429
1.72	0.06	247437.33	64917.17	2.09	233

Ret. Time: 1.45 &lt;&lt;&lt;&lt; POSITIVE SPECTRA &gt;&gt;&gt;&gt;



Ret. Time: 1.72



\*\*\* End of Report \*\*\*