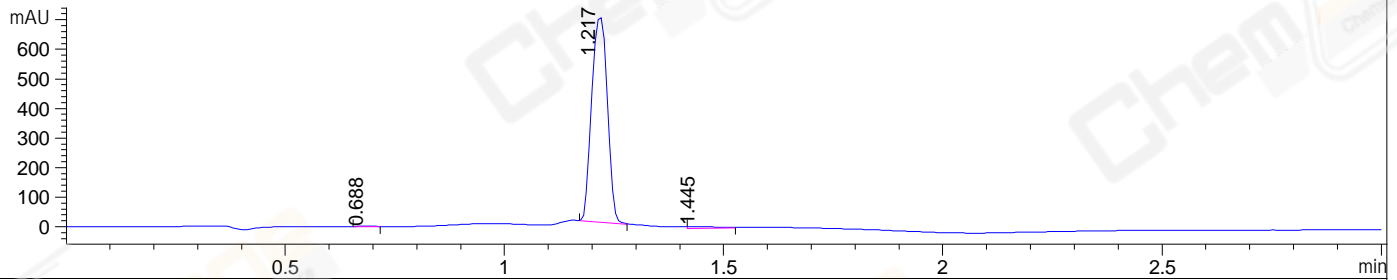


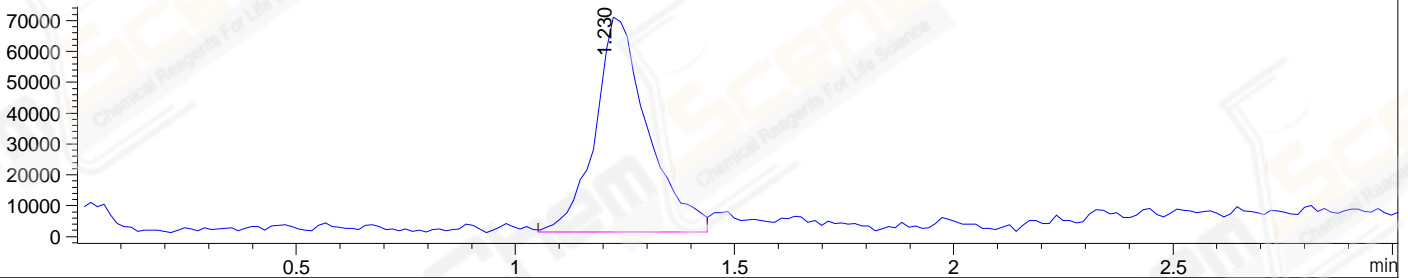
File ..\DATA\2021\20210727\1490\BIZ2021-727-WLQ1.D Tgt Mass (CHM):

Injection Date : 27 Jul 21 3:37 pm +0800 Seq. Line : 37
 Sample Name : BIZ2021-727-WLQ1 Location : P1-A-09
 Acq. Operator : myh_2380 Inj : 1
 Spec. Reported : MS Integration Inj Volume : 5 ul
 Acq. Method : D:\Chem32\1\data\2021\20210727\1490\1-POS-3MIN-1(500-2000).M
 Analysis Method : D:\CHEM32\1\DATA\2021\20210727\1490\1-POS-3MIN-1(500-2000).M
 CAS NO. : 851199-59-2
 Method Info : Mobile Phase: A: water(0.01%TFA) B:ACN(0.01%TFA)
 Gradient: 5% to 95%B within 1.3 min
 Flow Rate :1.8ml/min
 Column :SunFire C18, 4.6*50mm,3.5um A-RP-314
 Oven Temperature : 45C
 Postive,MS:500-2000

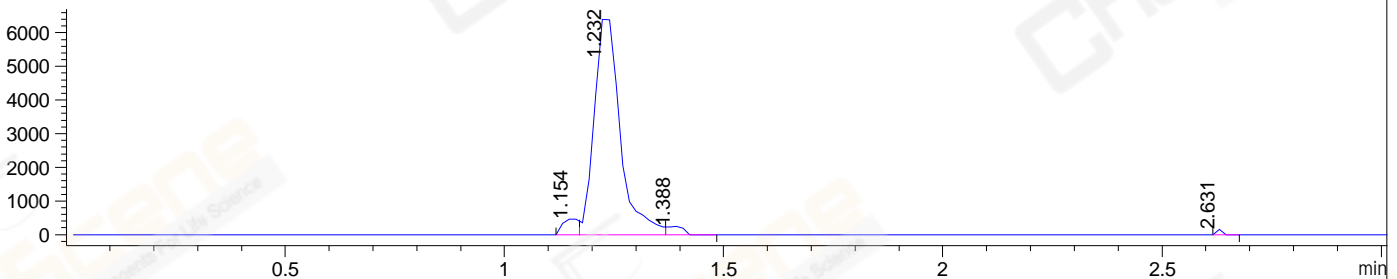
DAD1 B, Sig=214,4 Ref=off



MSD1 TIC, MS File ES-API, Pos, Scan, Frag: 70



Ion 1527, MSD1 1527, Target Mass 1526 +H Positive, EIC=1526.7:1527.7



Integration Results for DAD1 B, Sig=214,4 Ref=off

RetTim	Width	Area	Height	Area%	MS(+)
0.69	0.04	5.34	2.28	0.30	ND
1.22	0.04	1724.80	699.71	98.03	764
1.44	0.08	29.34	5.37	1.67	ND

Integration Results for MSD1 TIC, MS File

RetTim	Width	Area	Height	Area%	MS(+)
1.23	0.11	580481.81	70415.99	100.00	764

Ret. Time: 1.23

<<<< POSITIVE SPECTRA >>>>

ES-API Positive

