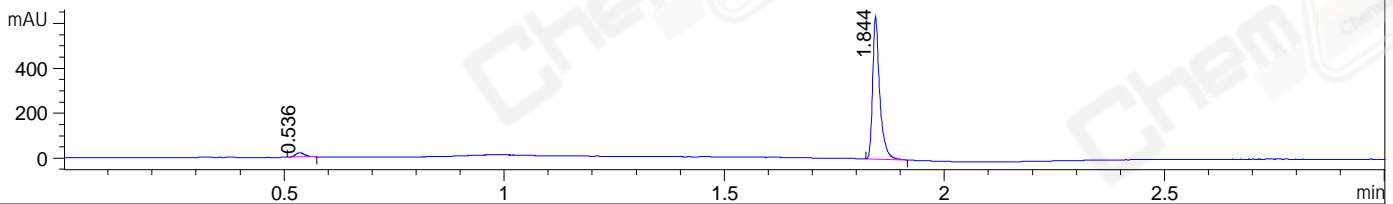
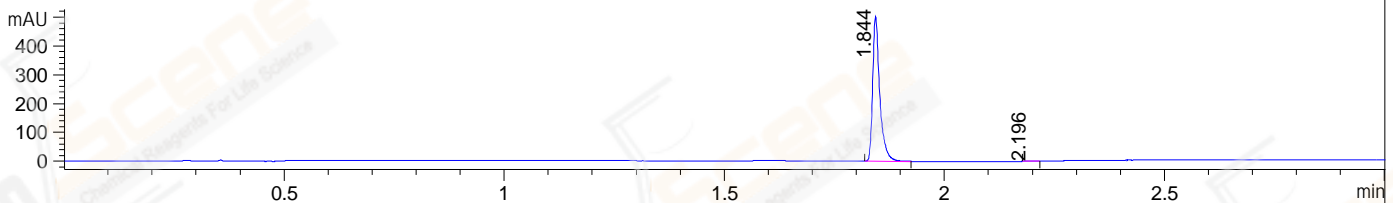


File ..\DATA\2019\20190827\709\CPK2019-826-11106.D Tgt Mass (CHM):  
 Injection Date : 27 Aug 19 10:02 am +0800 Seq. Line : 17  
 Sample Name : CPK2019-826-11106 Location : P1-C-04  
 Acq. Operator : ZJ\_1432 Inj : 1  
 Spec. Reported : MS Integration Inj Volume : 1 ul  
 Acq. Method : D:\Chem32\1\data\2019\20190827\709\1-POS-3MIN.M  
 Analysis Method : D:\CHEM32\1\DATA\2019\20190827\709\1-POS-3MIN.M  
 Catalog No : CS-2016 Batch#11106  
 Method Info : Mobile Phase: A: water(0.01%TFA) B:ACN(0.01%TFA)  
 Gradient: 5% to 95%B within 1.3 min  
 Flow Rate :1.8ml/min  
 Column :SunFire C18, 4.6\*50mm,3.5um A-RP-433  
 Oven Temperature : 45□

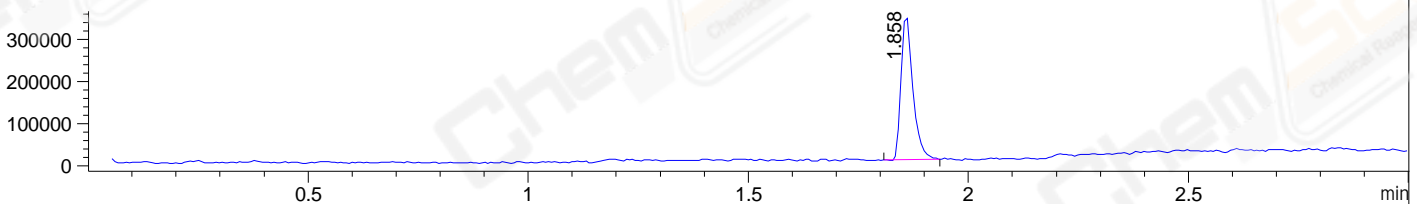
DAD1 B, Sig=214,4 Ref=off



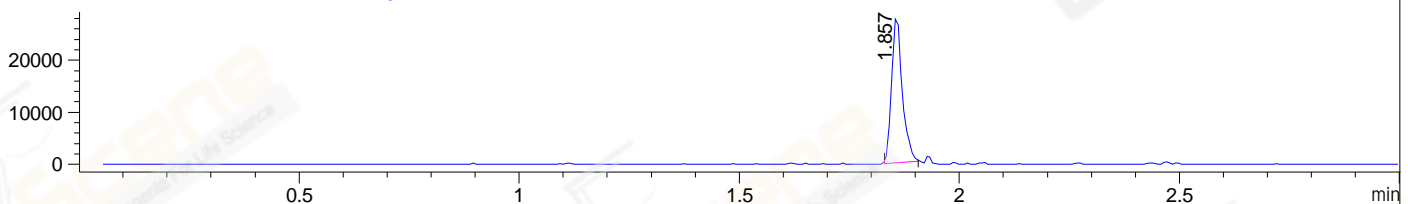
DAD1 C, Sig=254,4 Ref=off



MSD1 TIC, MS File ES-API, Pos, Scan, Frag: 70



Ion 379.5156, MSD1 379.5156, Target Mass 378.5156 +H Positive, EIC=379.22:380.22



## Integration Results for DAD1 B, Sig=214,4 Ref=off

RetTim	Width	Area	Height	Area%	MS (+)
0.54	0.02	23.78	17.92	3.24	129
1.84	0.02	710.71	634.92	96.76	379

## Integration Results for DAD1 C, Sig=254,4 Ref=off

RetTim	Width	Area	Height	Area%	MS (+)
1.84	0.02	566.47	503.67	99.62	379
2.20	0.02	2.18	1.41	0.38	141

## Integration Results for MSD1 TIC, MS File

RetTim	Width	Area	Height	Area%	MS (+)
1.86	0.03	640726.75	342715.34	100.00	379

Ret. Time: 1.86

<<<< POSITIVE SPECTRA >>>>

ES-API Positive

