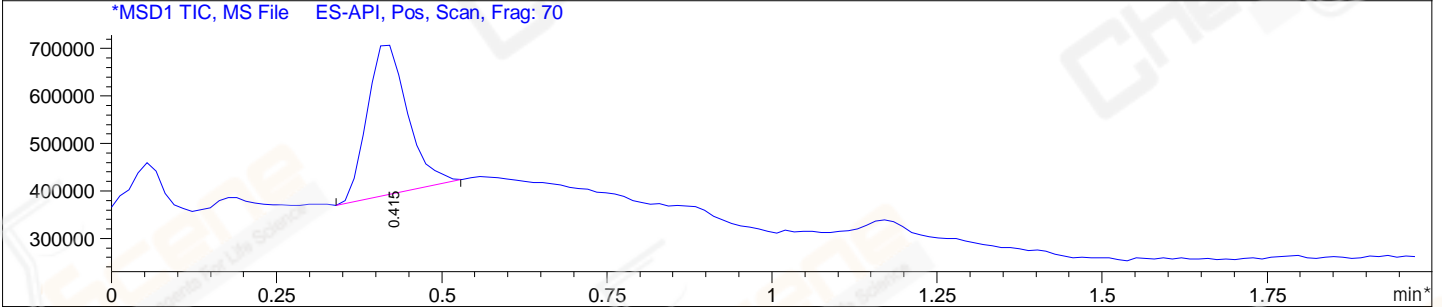
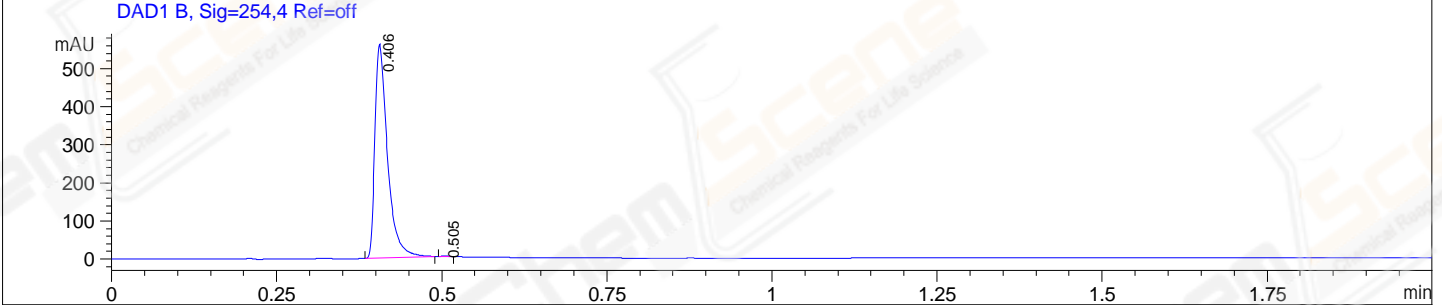
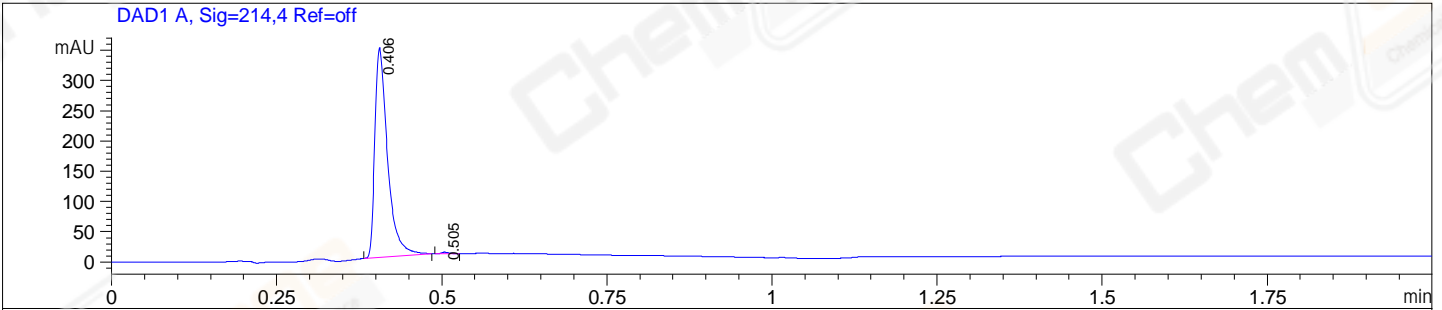


File D:\Data\2023\2023-06\2023-06-26\CPK2023-625-111169-UPLC-MS-06-032340.D
 Injection Date : 26-Jun-23, 15:26:21 Tgt Mass(EZX) :
 Sample Name : CPK2023-625-111169 Location : D1F-E9
 Acq. Operator : LY_2287 Inj : 1
 Spec. Reported : MS Integration Inj Volume : 0.2 ul
 Acq. Method : D:\software\method\Methods\1-POS-UPLC2.0MIN(0.8)-(0-2000).M
 Analysis Method : D:\SOFTWARE\METHOD\METHODS\1-POS-UPLC2.0MIN(0.8)-(0-2000).M
 CAS NO. : 103-90-2 WalkUp method: '1-POS-2MIN(0-2000)' Project: CPK2023
 Method Info : Mobile Phase: A: water(0.01%FA) B:ACN(0.01%FA)
 Gradient: 5% to 95%B within 0.8 min
 Flow Rate : 0.8ml/min
 Column : Poroshell 120 EC- C18, 2.1*50mm,1.9um
 Oven Temperature : 45C



Integration Results for DAD1 A, Sig=214,4 Ref=off

RetTim	Width	Area	Height	Area%
0.41	0.02	462.20	347.36	99.63
0.50	0.01	1.74	2.44	0.37

Integration Results for DAD1 B, Sig=254,4 Ref=off

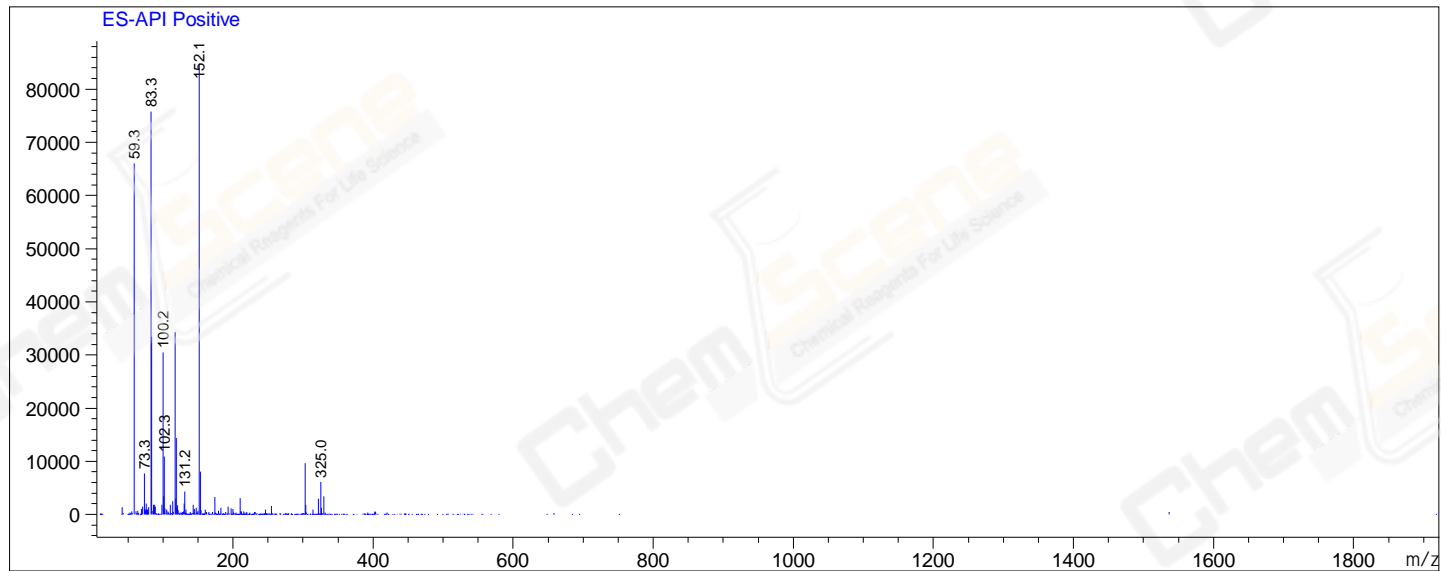
RetTim	Width	Area	Height	Area%
0.41	0.02	743.30	563.34	99.86
0.50	0.01	1.06	1.68	0.14

Integration Results for MSD1 TIC, MS File

RetTim	Width	Area	Height	Area%
0.41	0.07	1356143.38	322047.66	100.00

Ret. Time: 0.41

<<<< POSITIVE SPECTRA >>>>



*** End of Report ***