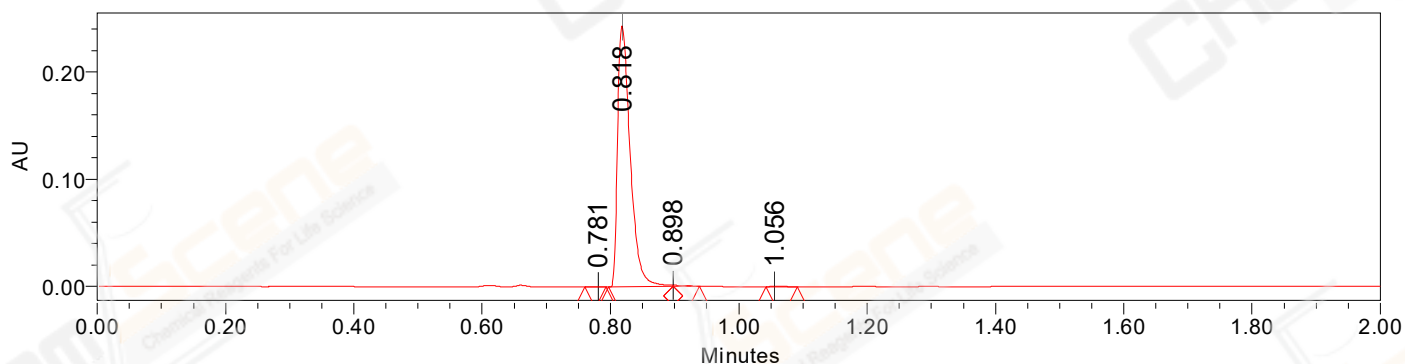


SAMPLE INFORMATION

Sample Name: BIZ2021-802-SCH10
CAS NO.: 1029044-16-3
Vial: 1:B,2
Injection #: 1
Injection Volume: 0.50 ul
Run Time: 2.8 Minutes
Sample Set Name: 20210803_2

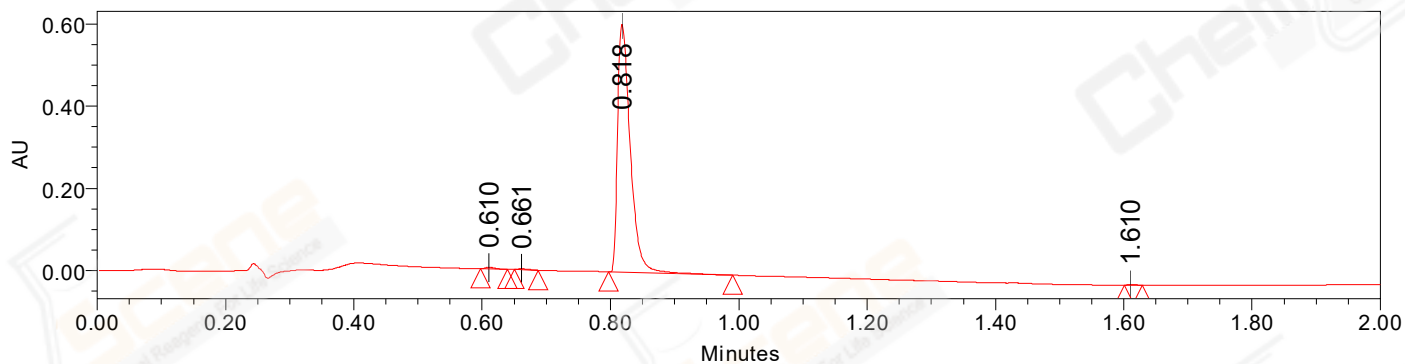
Acquired By: LY
Date Acquired: 8/3/2021 5:57:45 PM CST
Acq. Method Set: 1_POS_2MIN
Date Processed: 8/4/2021 2:06:44 PM CST,
Processing Method: PDA_01, PDA_02, MS_scan
Channel Name: PDA Ch1 214nm@4.8nm, MS TIC,
Column Name: Poroshell 120 EC-C18 A-RP-657

Auto-Scaled Chromatogram



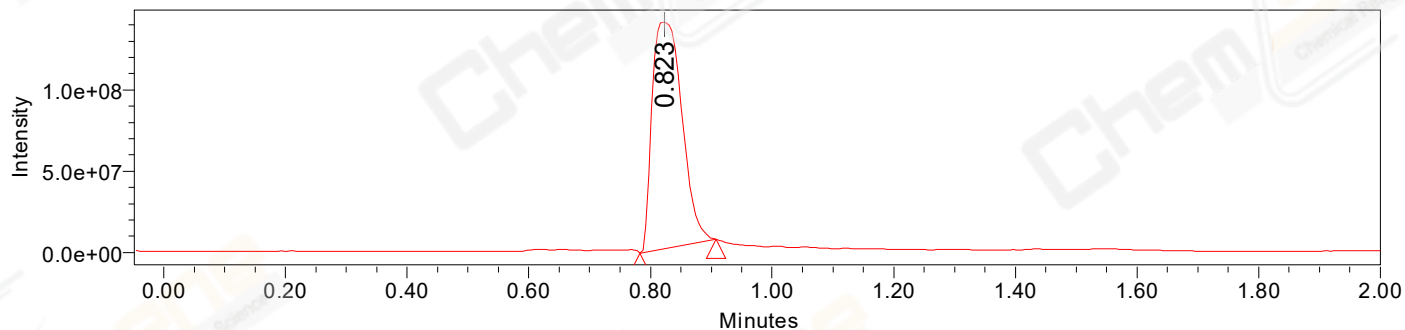
Processed Channel Descr. PDA Ch2 254nm@4.8nm

Auto-Scaled Chromatogram



Processed Channel Descr. PDA Ch1 214nm@4.8nm

Auto-Scaled Chromatogram



Processed Channel Descr. ACQ-SQD2 1: MS Scan MS TIC, Smoothed by 9 point Savitzky-Golay Filter., Time offset by -0.053 mins. (1: 150.00-1000.00 ES+, Centroid, CV=30)

Peak Results
Channel Name: PDA Ch2 254nm@4.8nm

	RT	Width (sec)	Area	Height	% Area	Base Peak (Combined) (m/z)	Channel Name
1	0.781	2.000	391	400	0.12	151.17	PDA Ch2 254nm@4.8nm
2	0.818	6.000	333834	243587	99.22	262.95	PDA Ch2 254nm@4.8nm
3	0.898	2.450	1505	1130	0.45	209.86	PDA Ch2 254nm@4.8nm
4	1.056	2.950	741	586	0.22	288.55	PDA Ch2 254nm@4.8nm

Peak Results
Channel Name: PDA Ch1 214nm@4.8nm

	RT	Width (sec)	Area	Height	% Area	Base Peak (Combined) (m/z)	Channel Name
1	0.610	2.500	3744	3552	0.44	154.42	PDA Ch1 214nm@4.8nm
2	0.661	2.250	2809	2686	0.33	150.79	PDA Ch1 214nm@4.8nm
3	0.818	11.600	836261	604415	99.03	209.83	PDA Ch1 214nm@4.8nm
4	1.610	1.650	1660	1787	0.20	210.80	PDA Ch1 214nm@4.8nm

Peak Results
Channel Name: MS TIC

	RT	Width (sec)	Area	Height	% Area	Base Peak (Combined) (m/z)	Channel Name
1	0.823	7.536	473986849	139800027	100.00	209.88	MS TIC

Match Plot

