

File E:\DATA\UPLC-MS-03\2021-07-30\ZFX10165-004-1-000615.D

Injection Date : 30-Jul-21, 11:28:58

Tgt Mass(EZX) :

Sample Name : ZFX10165-004-1

Location :

Acq. Operator : zjl\_706

Inj : 1

Spec. Reported : MS Integration

Inj Volume : 0.2 ul

Acq. Method : E:\Chem32\1\Methods\1-POS-UPLC2.0MIN(0.8ML)-(150-1000).M

Analysis Method : E:\CHEM32\1\METHODS\1-POS-UPLC2.0MIN(0.8ML)-(150-1000).M

CAS NO. : 1539318-36-9 WalkUp method: '1-POS-2MIN' Target:

Method Info : Mobile Phase: A: water(0.01%TFA) B:ACN(0.01%TFA)

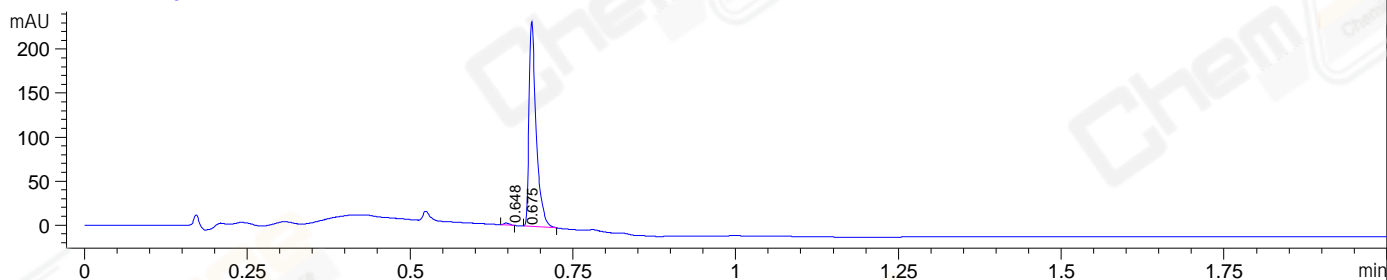
Gradient: 5% to 95%B within 0.6 min

Flow Rate : 0.8ml/min

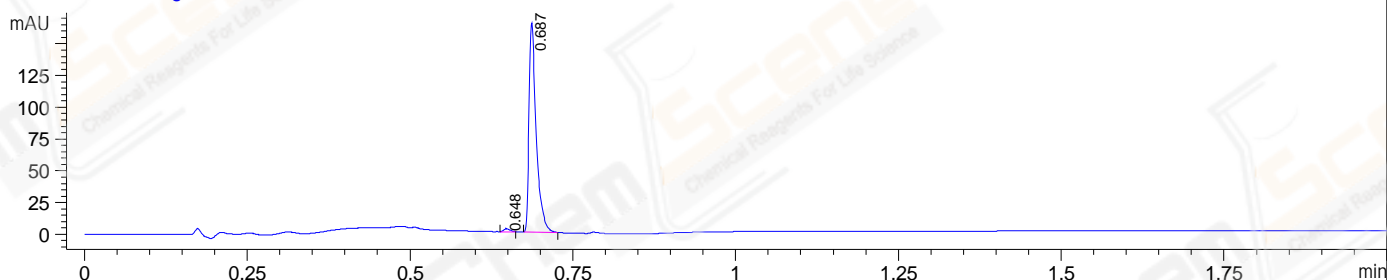
Column :Poroshell 120 EC- C18, 2.1\*50mm,1.9um A-RP-750

Oven Temperature : 45C

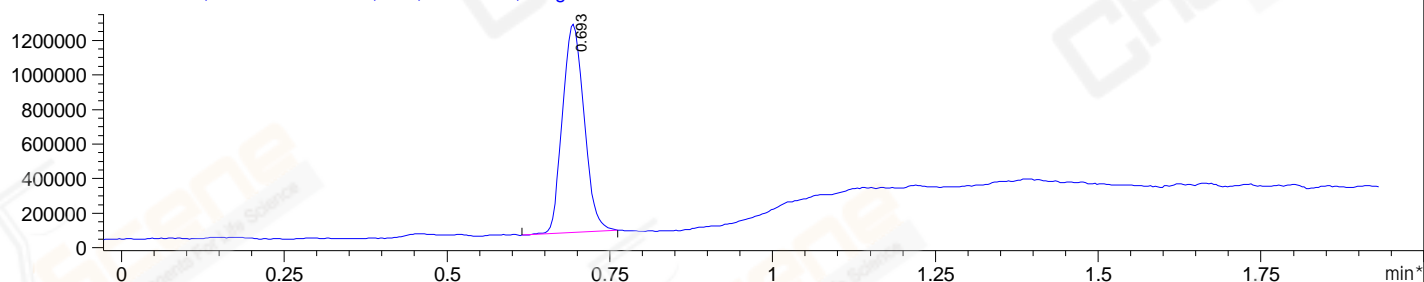
DAD1 A, Sig=214,4 Ref=off



DAD1 B, Sig=254,4 Ref=off



\*MSD1 TIC, MS File ES-API, Pos, Fast Scan, Frag: 70



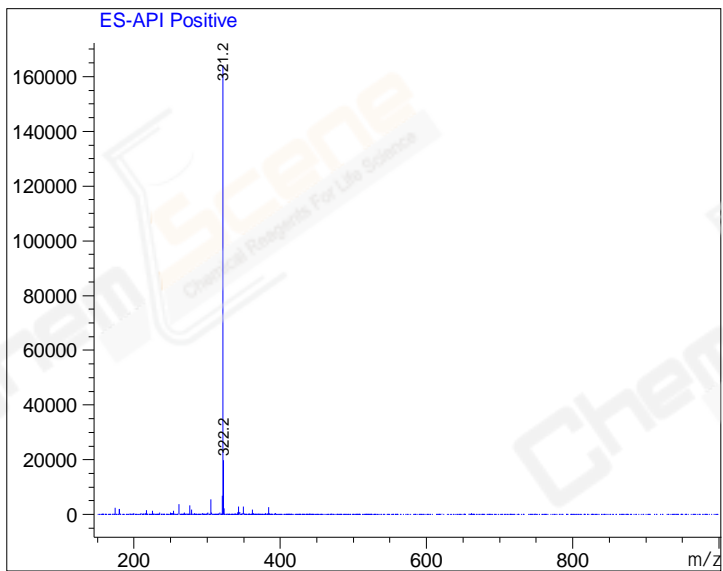
Integration Results for DAD1 A, Sig=214,4 Ref=off

RetTim	Width	Area	Height	Area%
0.65	0.01	1.54	2.48	0.86
0.67	0.01	178.26	0.02	99.14

Integration Results for DAD1 B, Sig=254,4 Ref=off

RetTim	Width	Area	Height	Area%
0.65	0.01	1.51	2.41	1.18
0.69	0.01	126.89	165.99	98.82

Ret. Time: 0.69 <<<< POSITIVE SPECTRA >>>>



\*\*\* End of Report \*\*\*