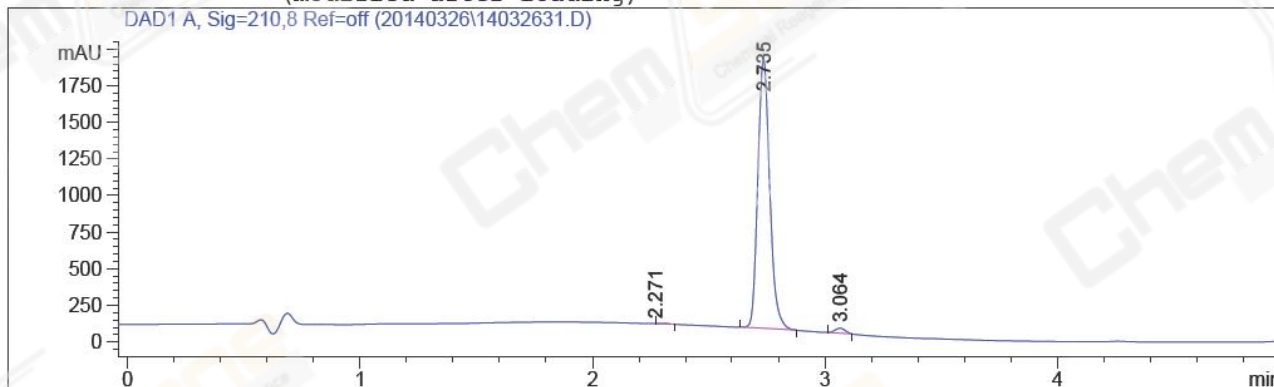


Catalog No : CS-1389 Batch#11195

=====
Injection Date : 3/26/2014 1:48:45 PM Seq. Line : 31
Sample Name : BIZ2014-326-ZLQ4 Location : Vial 24
Acq. Operator : SY Inj : 1
Acq. Instrument : Instrument 1 Inj Volume : 3 µl
Acq. Method : E:\METHODS\METHODS\20101020\3-9A.M
Last changed : 1/14/2014 9:44:46 AM by SY
Analysis Method : E:\METHODS\METHODS\20101020\3-9A.M
Last changed : 3/26/2014 1:56:33 PM by SY
(modified after loading)



=====
Area Percent Report
=====

Sorted By : Signal
Multiplier : 1.0000
Dilution : 1.0000
Use Multiplier & Dilution Factor with ISTDs

Signal 1: DAD1 A, Sig=210,8 Ref=off

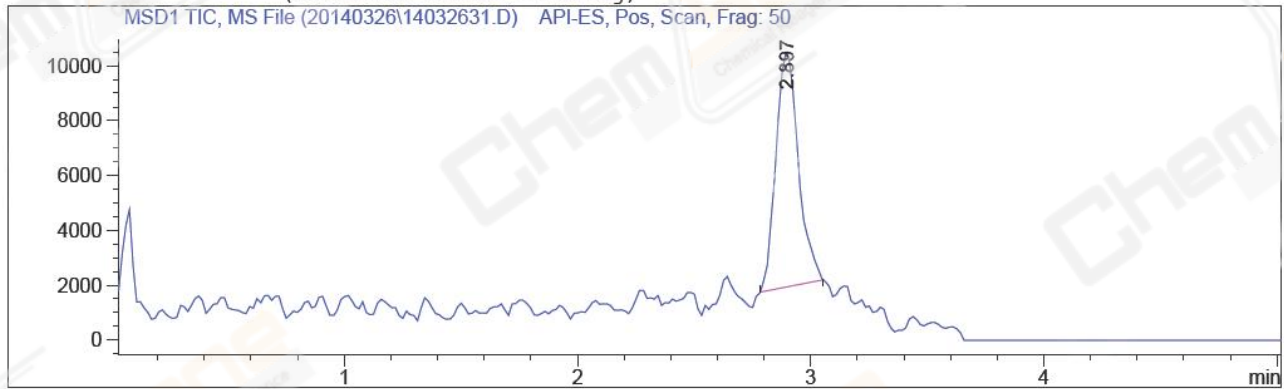
Peak #	RetTime [min]	Type	Width [min]	Area [mAU*s]	Height [mAU]	Area %
1	2.271	MM R	0.0515	15.75069	7.41995e-1	0.2357
2	2.735	MM R	0.0581	6564.02783	1884.47266	98.2347
3	3.064	MM R	0.0501	102.20448	33.98685	1.5296

Totals : 6681.98300 1919.20150

=====
*** End of Report ***
=====

Catalog No : CS-1389 Batch#11195

=====
Injection Date : 3/26/2014 1:48:45 PM Seq. Line : 31
Sample Name : BIZ2014-326-ZLQ4 Location : Vial 24
Acq. Operator : SY Inj : 1
Acq. Instrument : Instrument 1 Inj Volume : 3 µl
Acq. Method : E:\METHODS\METHODS\20101020\3-9A.M
Last changed : 1/14/2014 9:44:46 AM by SY
Analysis Method : E:\METHODS\METHODS\20101020\3-9A.M
Last changed : 3/26/2014 1:58:29 PM by SY
(modified after loading)



MS Signal: MSD1 TIC, MS File, API-ES, Pos, Scan, Frag: 50
Spectra averaged over upper half of peaks.
Noise Cutoff: 1000 counts.
Reportable Ion Abundance: > 10%.

Retention Time (MS)	MS Area	Mol. Weight or Ion
2.897	57236	406.00 I 404.00 I



*** End of Report ***