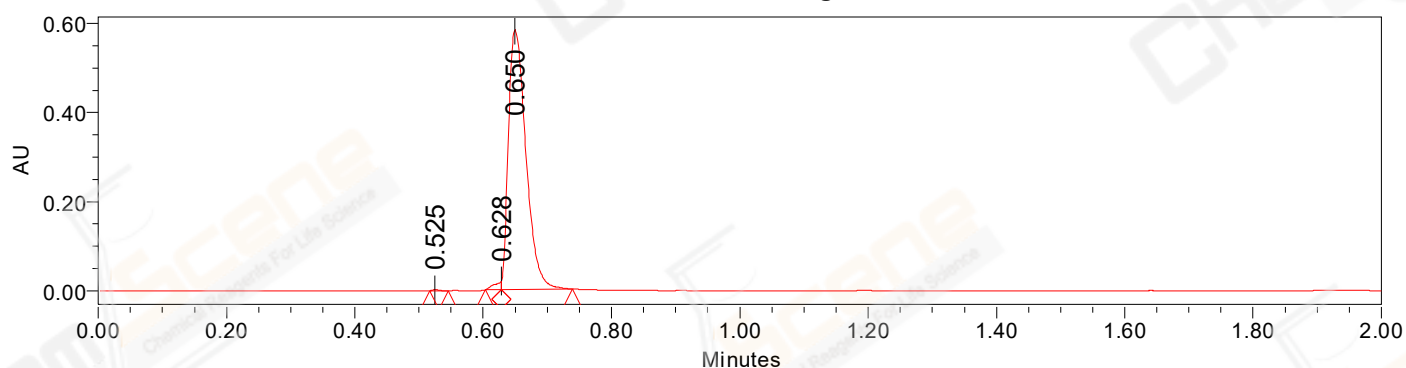


SAMPLE INFORMATION

CAS NO.: 1948273-03-7
Sample information:
Vial: 1:F,5
Injection #: 1
Injection Volume: 1.00 ul
Run Time: 2.8 Minutes
Sample Set Name: 20210817

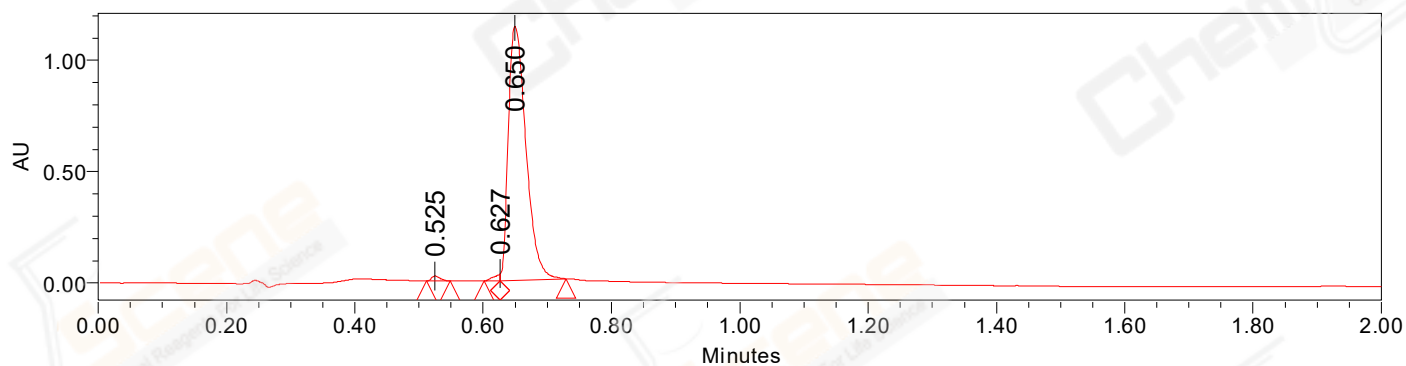
Acquired By: LY
Date Acquired: 8/17/2021 9:59:54 AM CST
Acq. Method Set: 1_POS_2MIN
Date Processed: 8/17/2021 10:49:22 AM CST,
Processing Method: PDA_01, MS_scan
Channel Name: PDA Ch1 214nm@4.8nm, MS TIC,
Column Name: Poroshell 120 EC-C18 A-RP-657

Auto-Scaled Chromatogram



— Processed Channel Descr. PDA Ch2 254nm@4.8nm

Auto-Scaled Chromatogram



— Processed Channel Descr. PDA Ch1 214nm@4.8nm

Peak Results

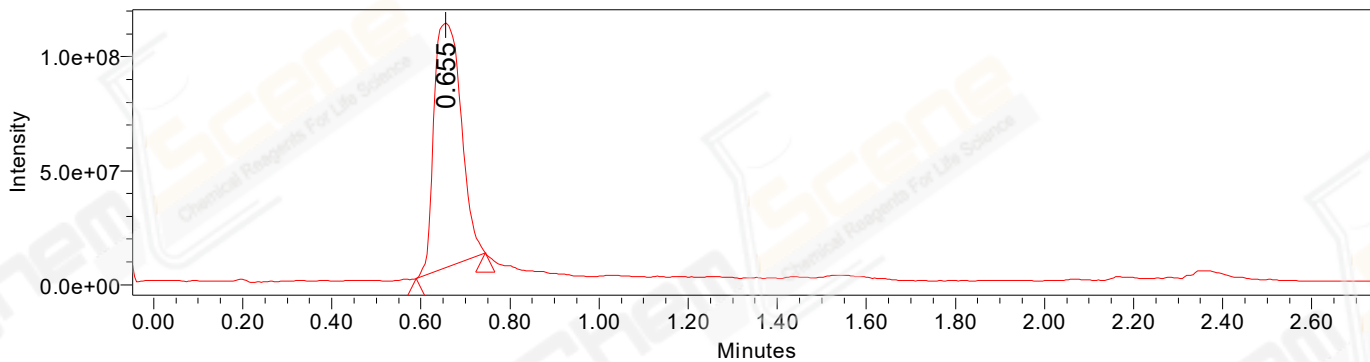
Channel Name: PDA Ch2 254nm@4.8nm

	RT	Width (sec)	Area	Height	% Area	Base Peak (Combined) (m/z)	Channel Name
1	0.525	1.700	1724	2279	0.15	346.46	PDA Ch2 254nm@4.8nm
2	0.628	1.500	14697	19464	1.31	202.24	PDA Ch2 254nm@4.8nm
3	0.650	6.650	1103025	582214	98.53	347.64	PDA Ch2 254nm@4.8nm

Peak Results
Channel Name: PDA Ch1 214nm@4.8nm

	RT	Width (sec)	Area	Height	% Area	Base Peak (Combined) (m/z)	Channel Name
1	0.525	2.200	19039	21796	0.86	230.42	PDA Ch1 214nm@4.8nm
2	0.627	1.500	20960	31347	0.95	202.24	PDA Ch1 214nm@4.8nm
3	0.650	6.150	2166839	1140094	98.19	347.64	PDA Ch1 214nm@4.8nm

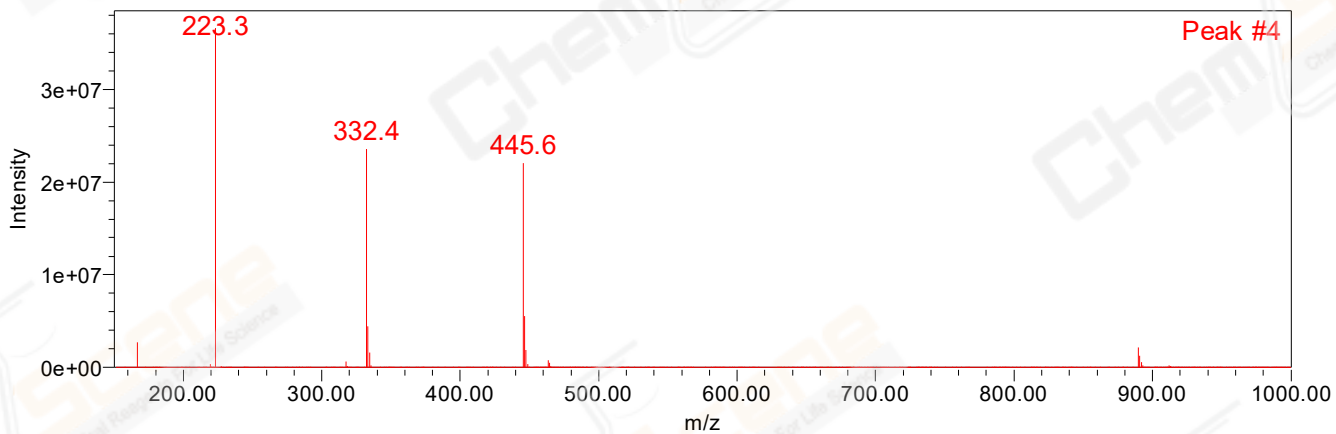
Auto-Scaled Chromatogram



Peak Results
Channel Name: MS TIC

RT	Width (sec)	Area	Height	% Area	Base Peak (Combined) (m/z)	Channel Name	
1	0.655	9.276	454235432	107161071	100.00	223.35	MS TIC

Match Plot



Retention Time 0.655 Channel Name MS TIC