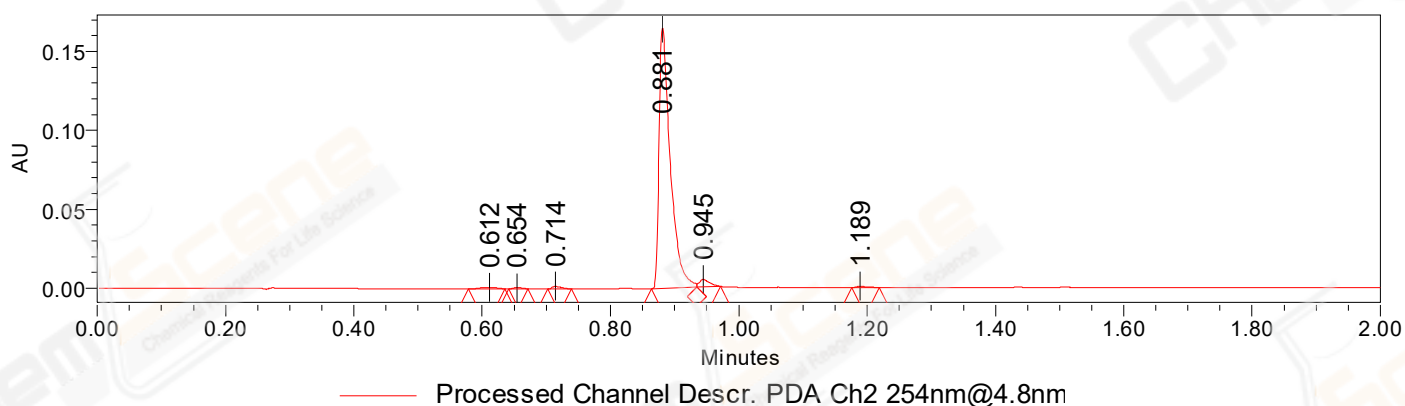


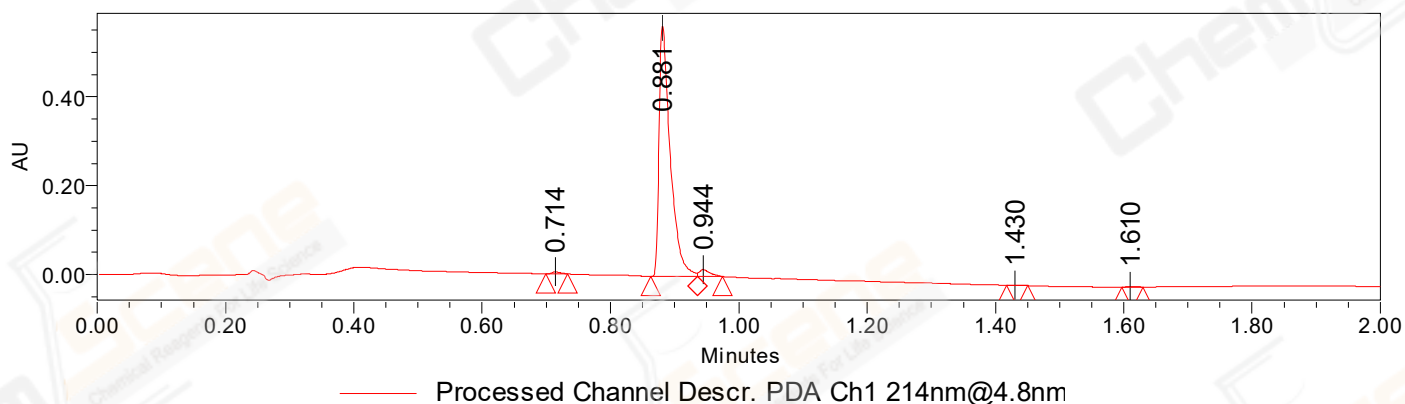
SAMPLE INFORMATION

Sample Name:	BIZ2021-819-SCH6	Acquired By:	LY
CAS NO.:	1132709-14-8	Date Acquired:	8/20/2021 2:09:42 PM CST
Vial:	1:C,5	Acq. Method Set:	1_POS_2MIN
Injection #:	1	Date Processed:	8/20/2021 3:26:10 PM CST,
Injection Volume:	0.50 ul	Processing Method:	PDA_01, MS_scan
Run Time:	2.8 Minutes	Channel Name:	PDA Ch1 214nm@4.8nm, MS TIC,
Sample Set Name:	20210820	Column Name:	Poroshell 120 EC-C18 A-RP-657

Auto-Scaled Chromatogram



Auto-Scaled Chromatogram



Peak Results

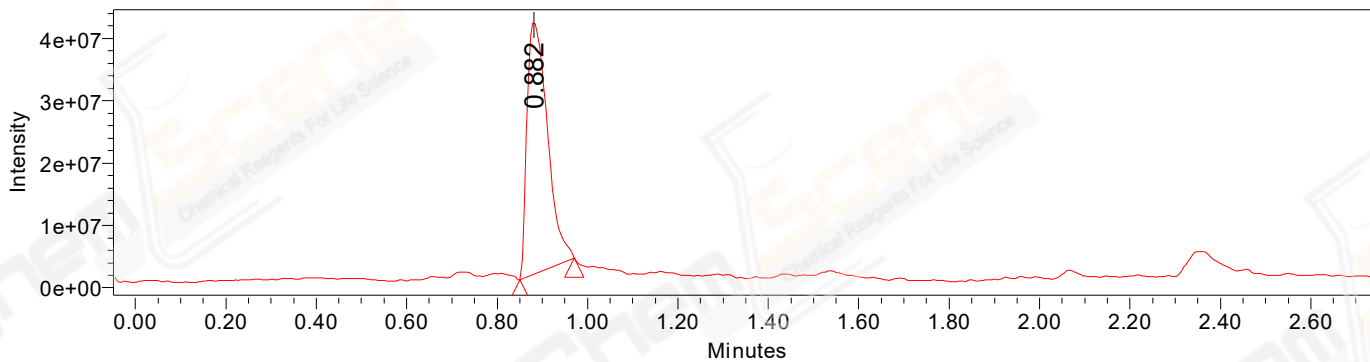
Channel Name: PDA Ch2 254nm@4.8nm

	RT	Width (sec)	Area	Height	% Area	Base Peak (Combined) (m/z)	Channel Name
1	0.612	3.400	1491	833	0.71	184.26	PDA Ch2 254nm@4.8nm
2	0.654	1.800	671	749	0.32	524.67	PDA Ch2 254nm@4.8nm
3	0.714	2.200	1577	1646	0.75	182.38	PDA Ch2 254nm@4.8nm
4	0.881	4.200	200850	165083	95.11	299.35	PDA Ch2 254nm@4.8nm
5	0.945	2.250	5478	4751	2.59	367.50	PDA Ch2 254nm@4.8nm
6	1.189	2.550	1114	865	0.53	386.75	PDA Ch2 254nm@4.8nm

Peak Results
Channel Name: PDA Ch1 214nm@4.8nm

	RT	Width (sec)	Area	Height	% Area	Base Peak (Combined) (m/z)	Channel Name
1	0.714	2.050	4150	4680	0.59	182.40	PDA Ch1 214nm@4.8nm
2	0.881	4.350	684478	563629	96.59	299.34	PDA Ch1 214nm@4.8nm
3	0.944	2.350	17839	15351	2.52	367.51	PDA Ch1 214nm@4.8nm
4	1.430	1.950	760	730	0.11	152.07	PDA Ch1 214nm@4.8nm
5	1.610	2.000	1381	1452	0.19	153.27	PDA Ch1 214nm@4.8nm

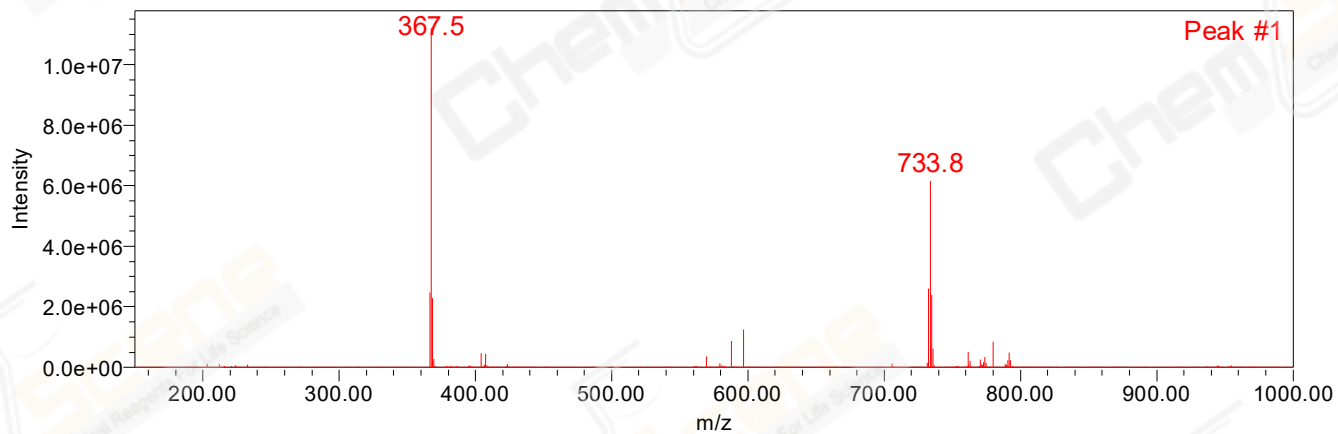
Auto-Scaled Chromatogram



Peak Results
Channel Name: MS TIC

RT	Width (sec)	Area	Height	% Area	Base Peak (Combined) (m/z)	Channel Name	
1	0.882	7.247	127791121	40770886	100.00	367.49	MS TIC

Match Plot



Retention Time 0.882 Channel Name MS TIC