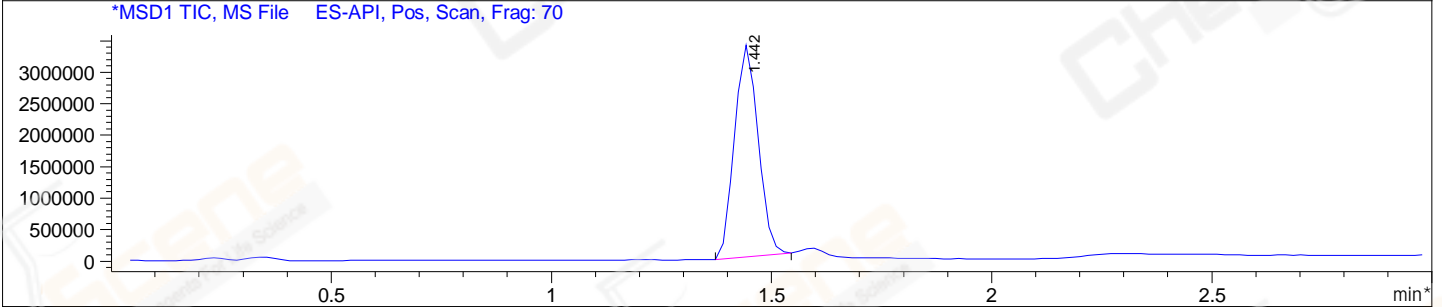
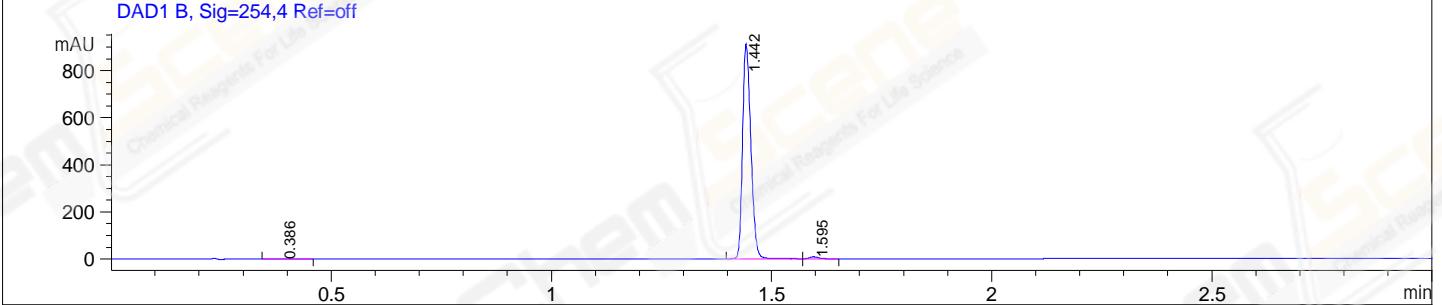
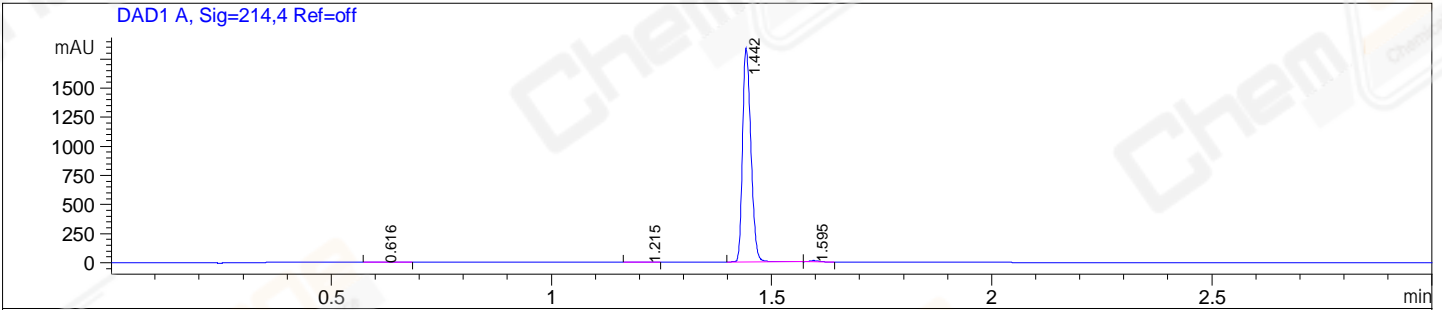


File E:\ChemStation\1\DATA\2025\2025-02\2025-02-12\CPK2025-0212-113075-UPLC-MS-10-054699.D  
 Injection Date : 12-Feb-25, 16:08:25 Tgt Mass(EZX) :  
 Sample Name : CPK2025-0212-113075 Location : P1-D-05  
 Acq. Operator : LY\_2278 Inj : 1  
 Spec. Reported : MS Integration Inj Volume : 0.8 ul  
 Acq. Method : E:\ChemStation\1\Methods\1-POS-UPLC3.0MIN(1.2)(150-1000).M  
 Analysis Method : E:\CHEMSTATION\1\METHODS\1-POS-UPLC3.0MIN(1.2)(150-1000).M  
 CAS NO. : 218457-67-1 WalkUp method: '1-POS-3MIN' Project: CPK2025  
 Method Info : Mobile Phase: A: water(0.01%TFA) B:ACN(0.01%TFA)  
 Gradient: 5% to 95%B within 2.0 min  
 Flow Rate :1.2ml/min  
 Column :Shim-pack Scepter C18-120, 3.0\*33mm,3um  
 Oven Temperature : 45C



Integration Results for DAD1 A, Sig=214,4 Ref=off

RetTim	Width	Area	Height	Area%
0.62	0.05	1.96	0.62	0.08
1.22	0.02	1.37	0.96	0.06
1.44	0.02	2429.45	1834.22	99.28
1.59	0.02	14.37	10.73	0.59

Integration Results for DAD1 B, Sig=254,4 Ref=off

RetTim	Width	Area	Height	Area%
0.39	0.05	3.67	1.08	0.30
1.44	0.02	1195.76	909.02	98.79
1.59	0.02	10.92	8.11	0.90

Integration Results for MSD1 TIC, MS File

RetTim	Width	Area	Height	Area%
1.44	0.06	12543313.00	3359454.00	100.00

Ret. Time: 1.44

<<<< POSITIVE SPECTRA >>>>

