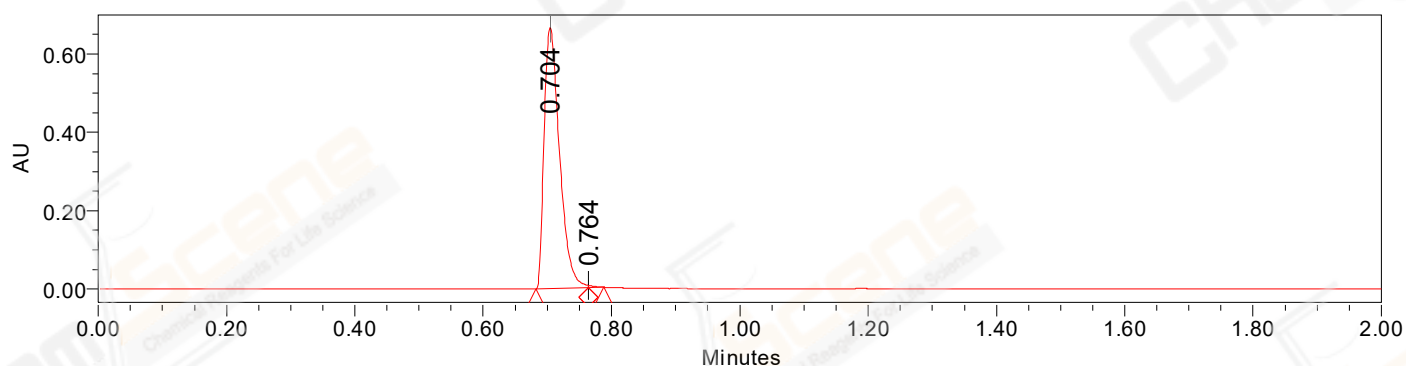


## SAMPLE INFORMATION

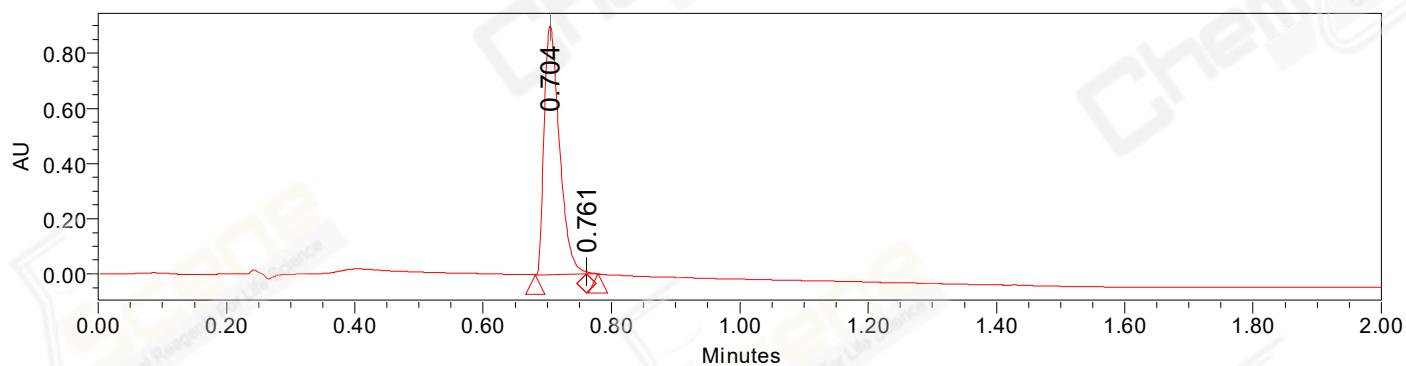
CAS NO.:	62669-70-9	Acquired By:	LY
Sample information:		Date Acquired:	8/26/2021 5:47:45 PM CST
Vial:	2:A,3	Acq. Method Set:	1_POS_2MIN
Injection #:	1	Date Processed:	8/27/2021 10:16:55 AM CST,
Injection Volume:	0.50 ul	Processing Method:	PDA_01, MS_scan
Run Time:	2.8 Minutes	Channel Name:	PDA Ch1 214nm@4.8nm, MS TIC,
Sample Set Name:	20210826	Column Name:	Poroshell 120 EC-C18 A-RP-657

### Auto-Scaled Chromatogram



— Processed Channel Descr. PDA Ch2 254nm@4.8nm

### Auto-Scaled Chromatogram



— Processed Channel Descr. PDA Ch1 214nm@4.8nm

#### Peak Results

Channel Name: PDA Ch2 254nm@4.8nm

	RT	Width (sec)	Area	Height	% Area	Base Peak (Combined) (m/z)	Channel Name
1	0.704	4.900	1109811	664901	99.69	331.38	PDA Ch2 254nm@4.8nm
2	0.764	1.400	3440	5808	0.31	345.40	PDA Ch2 254nm@4.8nm

#### Peak Results

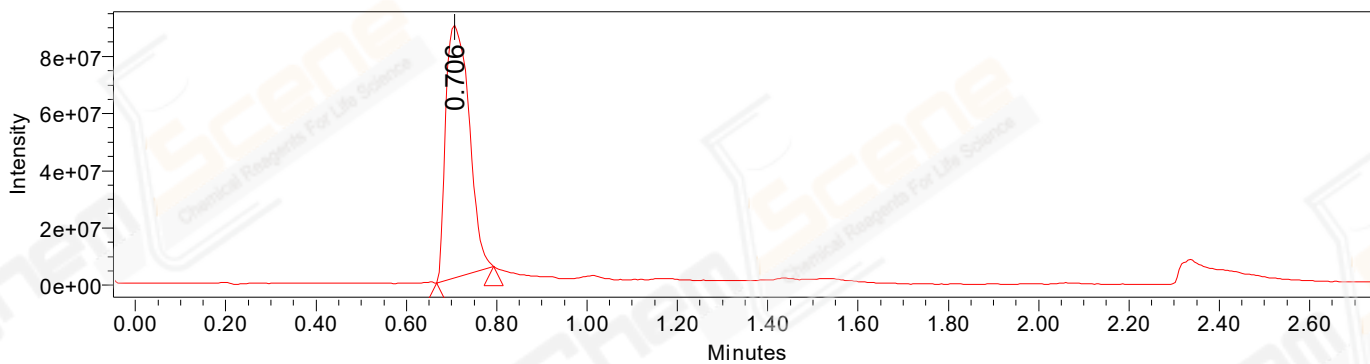
Channel Name: PDA Ch1 214nm@4.8nm

	RT	Width (sec)	Area	Height	% Area	Base Peak (Combined) (m/z)	Channel Name
1	0.704	4.800	1500708	900981	99.73	331.38	PDA Ch1 214nm@4.8nm

Peak Results  
Channel Name: PDA Ch1 214nm@4.8nm

	RT	Width (sec)	Area	Height	% Area	Base Peak (Combined) (m/z)	Channel Name
2	0.761	1.100	4080	8338	0.27	345.40	PDA Ch1 214nm@4.8nm

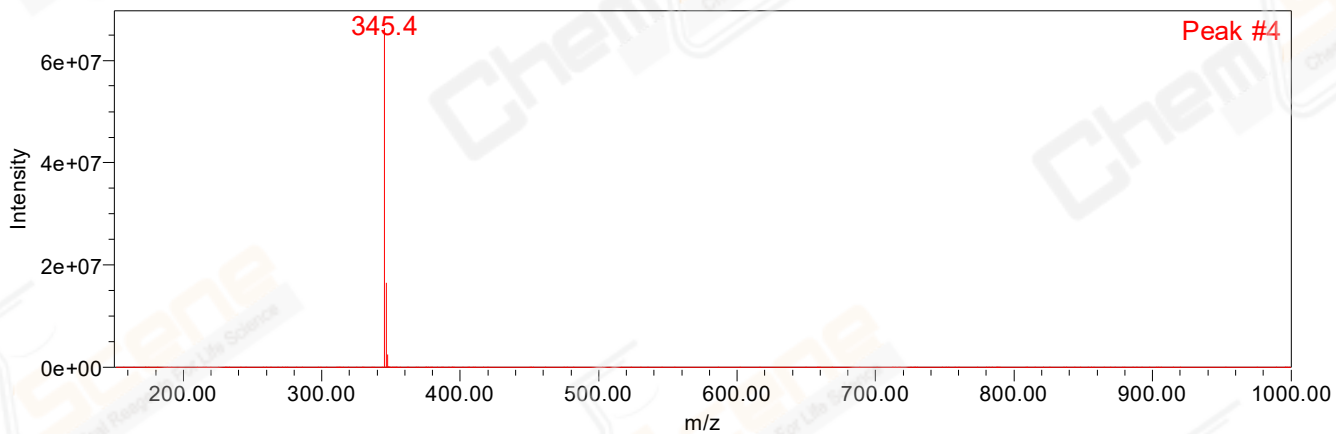
### Auto-Scaled Chromatogram



Peak Results  
Channel Name: MS TIC

	RT	Width (sec)	Area	Height	% Area	Base Peak (Combined) (m/z)	Channel Name
1	0.706	7.544	317385225	88291234	100.00	345.41	MS TIC

### Match Plot



Retention Time 0.706 Channel Name MS TIC