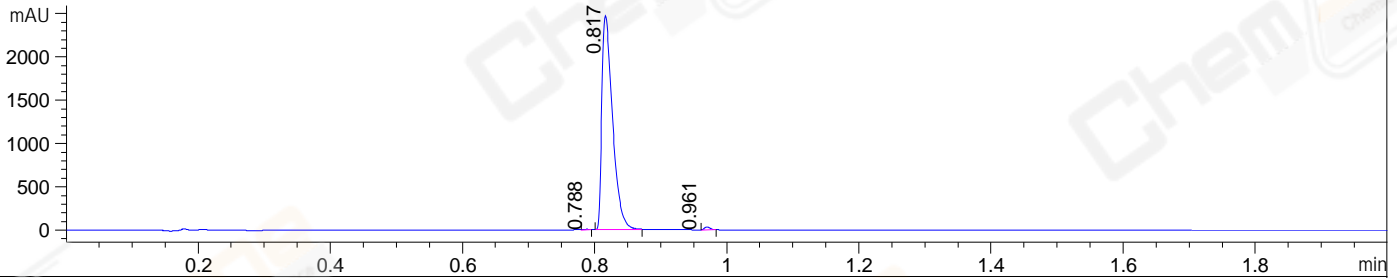
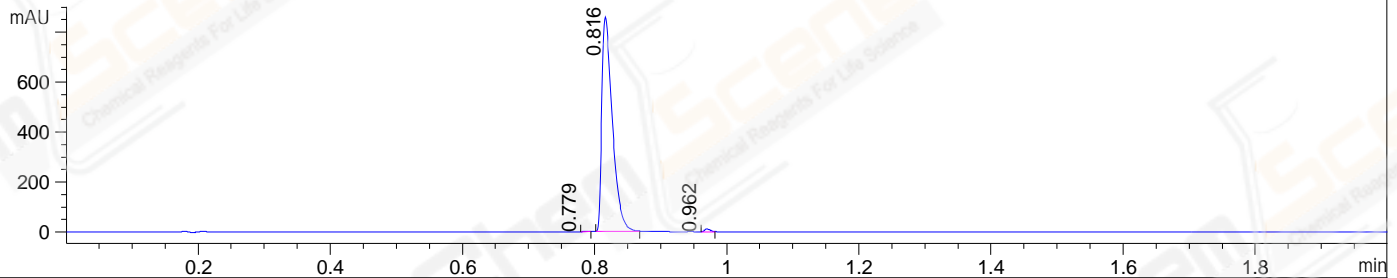


File ..MS\data\LY\2021-08-24\TL9843-009-P-025197.D Tgt Mass (EZ):
 Injection Date : 24 Aug 21 8:43 am +0800 Seq. Line : 0
 Sample Name : TL9843-009-P Location : P1-A-10
 Acq. Operator : LY_2278 Inj : 1
 Spec. Reported : MS Integration Inj Volume : 0.2 ul
 Acq. Method : D:\LCMS\Methods\1-POS-UPLC2.0MIN(0.8ML)-(150-1000).M
 Analysis Method : D:\LCMS\METHODS\1-POS-UPLC2.0MIN(0.8ML)-(150-1000).M
 CAS NO. : 1648863-90-4
 Method Info : Mobile Phase: A: water(0.01%TFA) B:ACN(0.01%TFA)
 Gradient: 5% to 95%B within 0.6 min
 Flow Rate : 0.8ml/min
 Column : Poroshell 120 EC- C18, 2.1*50mm,1.9um A-RP-750
 Oven Temperature : 45C

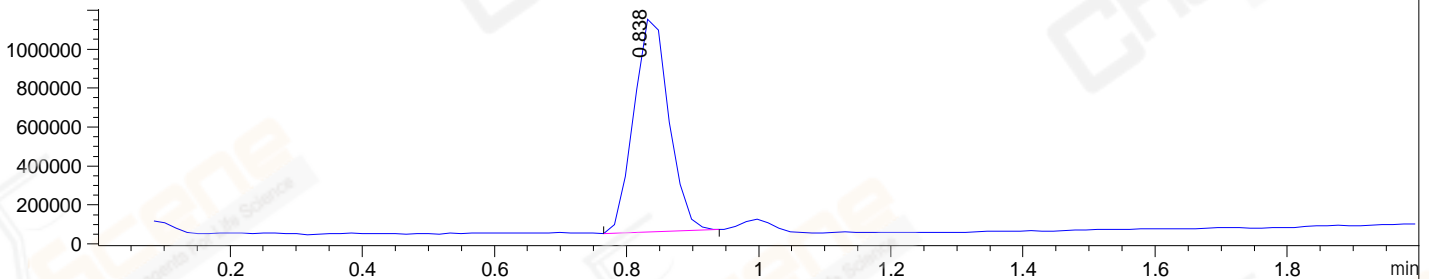
DAD1 A, Sig=214,4 Ref=off



DAD1 B, Sig=254,4 Ref=off



MSD1 TIC, MS File ES-API, Pos, Scan, Frag: 70



Integration Results for DAD1 A, Sig=214,4 Ref=off

RetTim	Width	Area	Height	Area%	MS (+)
0.79	0.01	3.61	6.67	0.13	247
0.82	0.02	2786.33	2468.70	99.20	247
0.96	0.01	18.83	-0.05	0.67	161

Integration Results for DAD1 B, Sig=254,4 Ref=off

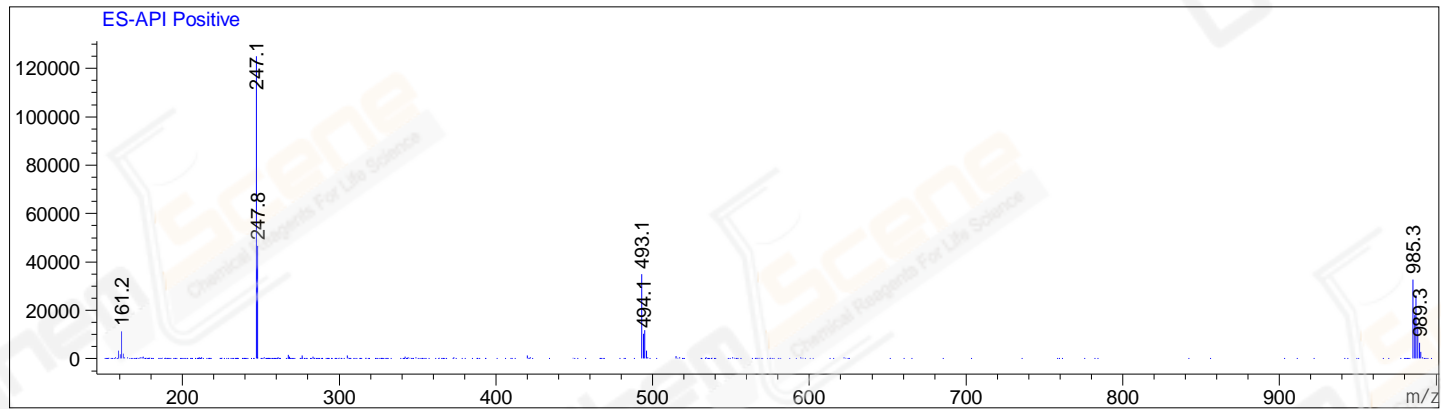
RetTim	Width	Area	Height	Area%	MS (+)
0.78	0.01	0.72	0.14	0.07	247
0.82	0.02	953.13	858.50	99.24	247
0.96	0.01	6.56	0.37	0.68	161

Integration Results for MSD1 TIC, MS File

RetTim	Width	Area	Height	Area%	MS (+)
0.84	0.06	4041144.75	1116723.38	100.00	247

Ret. Time: 0.84

<<<< POSITIVE SPECTRA >>>>



*** End of Report ***