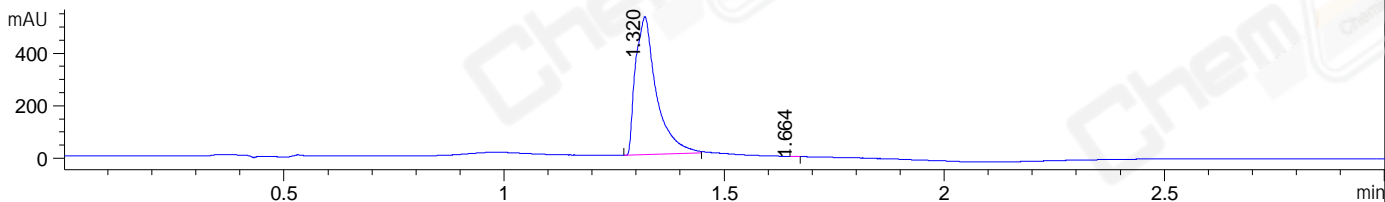
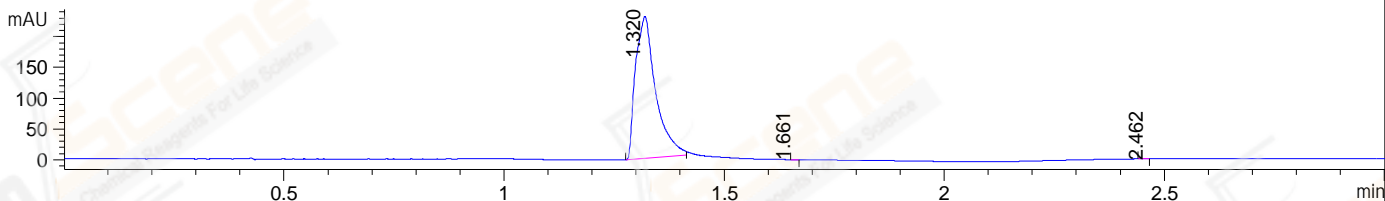


File ..\DATA\2019\20190411\561\CPK2019-411-11379.D Tgt Mass (CHM):  
 Injection Date : 11 Apr 19 4:03 pm +0800 Seq. Line : 17  
 Sample Name : CPK2019-411-11379 Location : P1-A-07  
 Acq. Operator : LQ\_1052 Inj : 1  
 Spec. Reported : MS Integration Inj Volume : 1 ul  
 Acq. Method : D:\Chem32\1\data\2019\20190411\561\1-POS-3MIN-1.M  
 Analysis Method : D:\CHEM32\1\DATA\2019\20190411\561\1-POS-3MIN-1.M  
 Catalog No : CS-1748 Batch#11379  
 Method Info : Mobile Phase: A: water(0.01%TFA) B:ACN(0.01%TFA)  
 Gradient: 5% to 95%B within 1.3 min  
 Flow Rate :1.8ml/min  
 Column :SunFire C18, 4.6\*50mm,3.5um A-RP-314  
 Oven Temperature : 45□

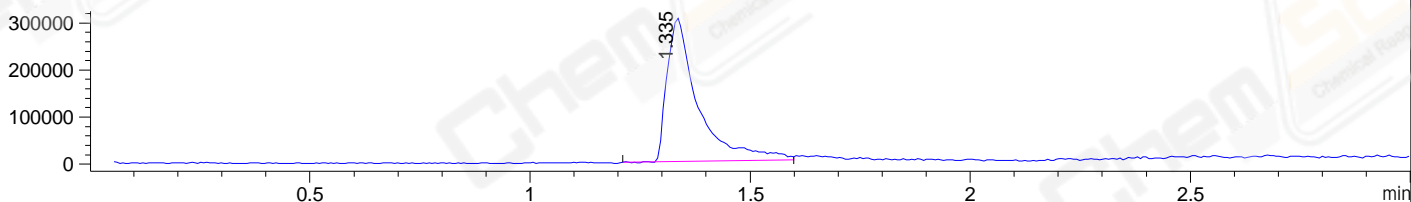
DAD1 B, Sig=214,4 Ref=off



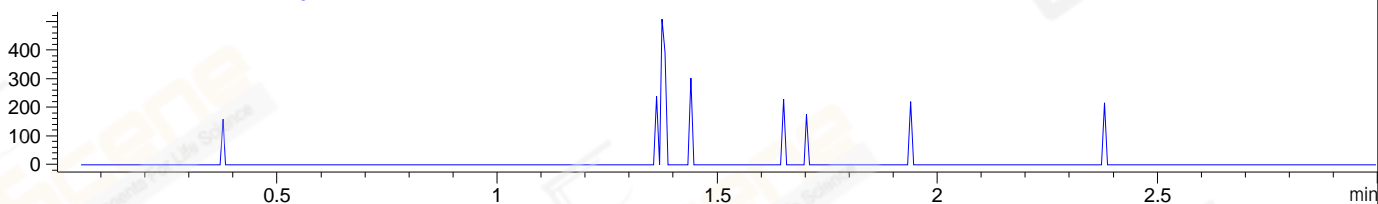
DAD1 C, Sig=254,4 Ref=off



MSD1 TIC, MS File ES-API, Pos, Scan, Frag: 70



Ion 641.2, MSD1 641.2, Target Mass 640.2 +H Positive, EIC=640.9:641.9



Integration Results for DAD1 B, Sig=214,4 Ref=off

RetTim	Width	Area	Height	Area%	MS (+)
1.32	0.04	1730.50	527.20	99.95	303
1.66	0.02	0.90	0.97	0.05	604

Integration Results for DAD1 C, Sig=254,4 Ref=off

RetTim	Width	Area	Height	Area%	MS (+)
1.32	0.04	731.74	230.65	99.97	303
1.66	0.01	0.07	0.12	0.01	604
2.46	0.02	0.17	0.13	0.02	142

Integration Results for MSD1 TIC, MS File

RetTim	Width	Area	Height	Area%	MS (+)
1.34	0.07	1491545.38	304541.22	100.00	303

Ret. Time: 1.34

<<<< POSITIVE SPECTRA >>>>

ES-API Positive

