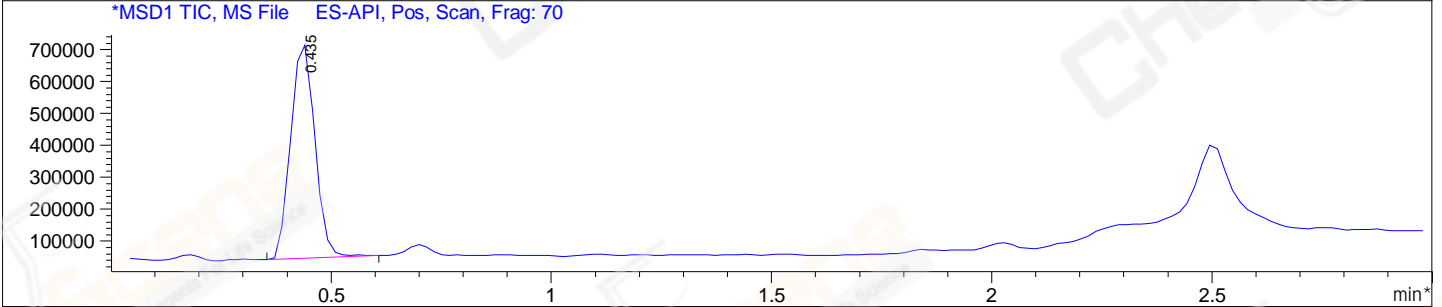
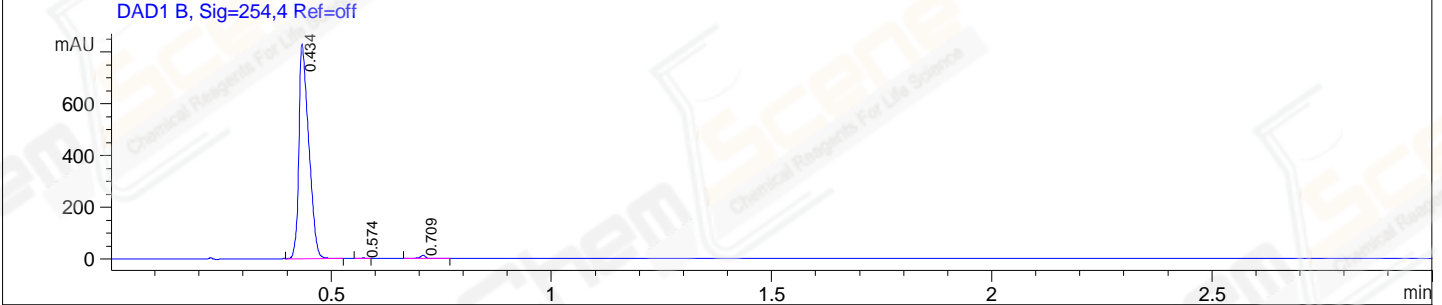
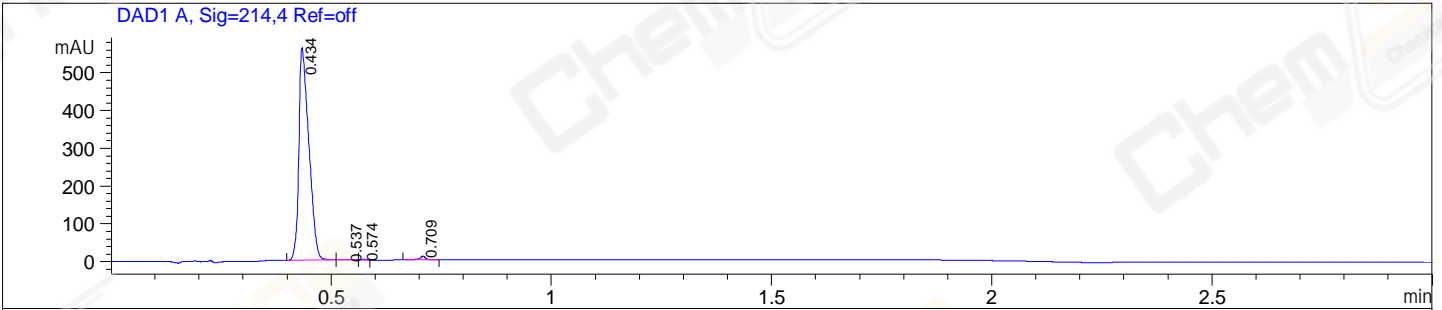


File E:\ChemStation\1\DATA\2024\2024-03\2024-03-19\CPK2024-318-114133-UPLC-MS-10-029345.D
 Injection Date : 19-Mar-24, 13:46:39 Tgt Mass(EZX) :
 Sample Name : CPK2024-318-114133 Location : P2-A-02
 Acq. Operator : LY_2278 Inj : 1
 Spec. Reported : MS Integration Inj Volume : 0.8 ul
 Acq. Method : E:\ChemStation\1\Methods\1-POS-UPLC3.0MIN(1.2)(150-1000).M
 Analysis Method : E:\CHEMSTATION\1\METHODS\1-POS-UPLC3.0MIN(1.2)(150-1000).M
 CAS NO. : 129830-38-2 WalkUp method: '1-POS-3MIN' Project: CPK2024
 Method Info : Mobile Phase: A: water(0.01%TFA) B:ACN(0.01%TFA)
 Gradient: 5% to 95%B within 2.0 min
 Flow Rate :1.2ml/min
 Column :Shim-pack Scepter C18-120, 3.0*33mm,3um
 Oven Temperature : 45C



Integration Results for DAD1 A, Sig=214,4 Ref=off

RetTim	Width	Area	Height	Area%
0.43	0.02	885.76	559.92	98.79
0.54	0.03	0.69	0.45	0.08
0.57	0.01	1.09	1.72	0.12
0.71	0.01	9.10	9.77	1.01

Integration Results for DAD1 B, Sig=254,4 Ref=off

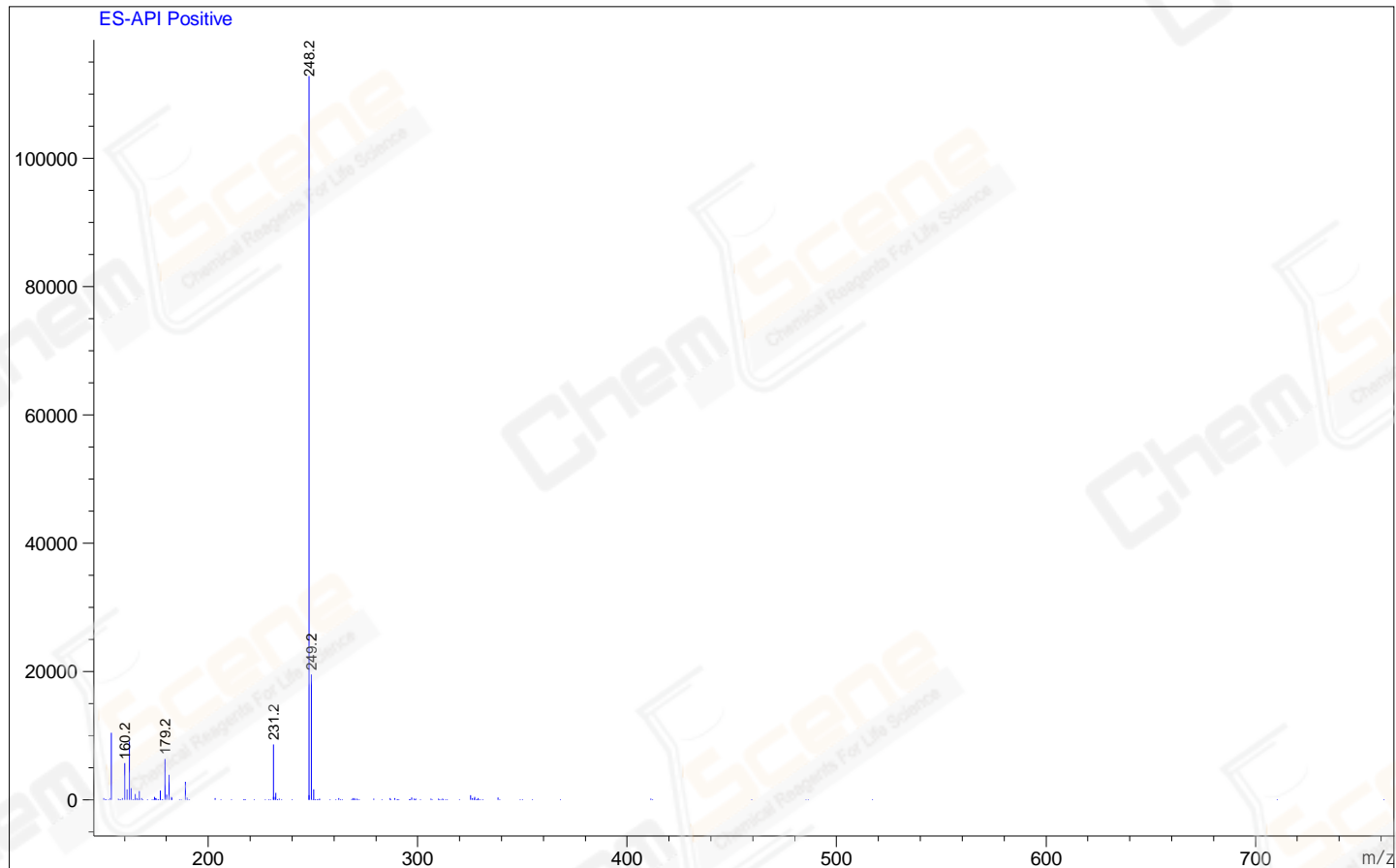
RetTim	Width	Area	Height	Area%
0.43	0.03	1288.01	830.08	98.98
0.57	0.01	1.63	2.35	0.13
0.71	0.01	11.66	12.65	0.90

Integration Results for MSD1 TIC, MS File

RetTim	Width	Area	Height	Area%
0.44	0.06	2575186.00	678996.38	100.00

Ret. Time: 0.44

<<<< POSITIVE SPECTRA >>>>



*** End of Report ***