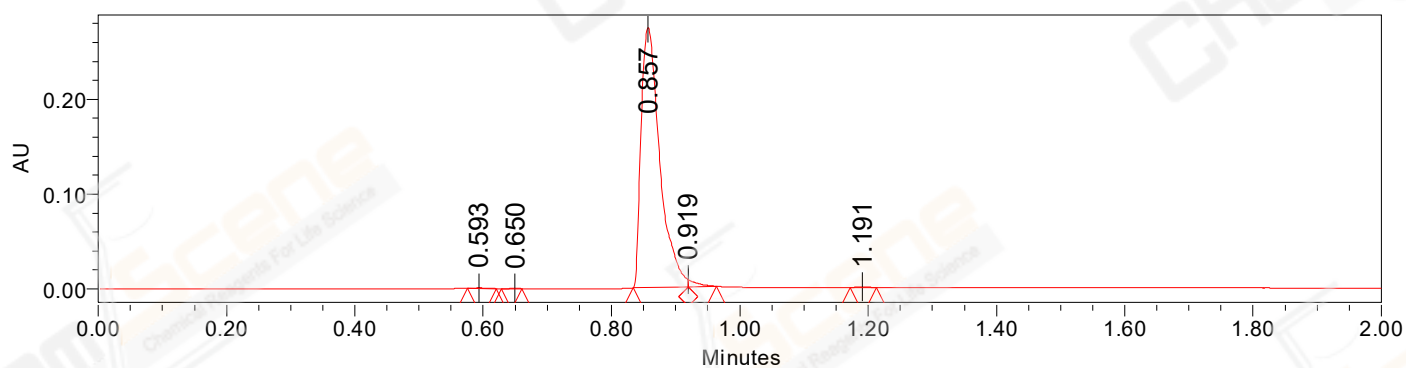


## SAMPLE INFORMATION

CAS NO.: 2229711-68-4  
Sample information:  
Vial: 2:A,6  
Injection #: 1  
Injection Volume: 0.20 ul  
Run Time: 2.8 Minutes  
Sample Set Name: 20210827

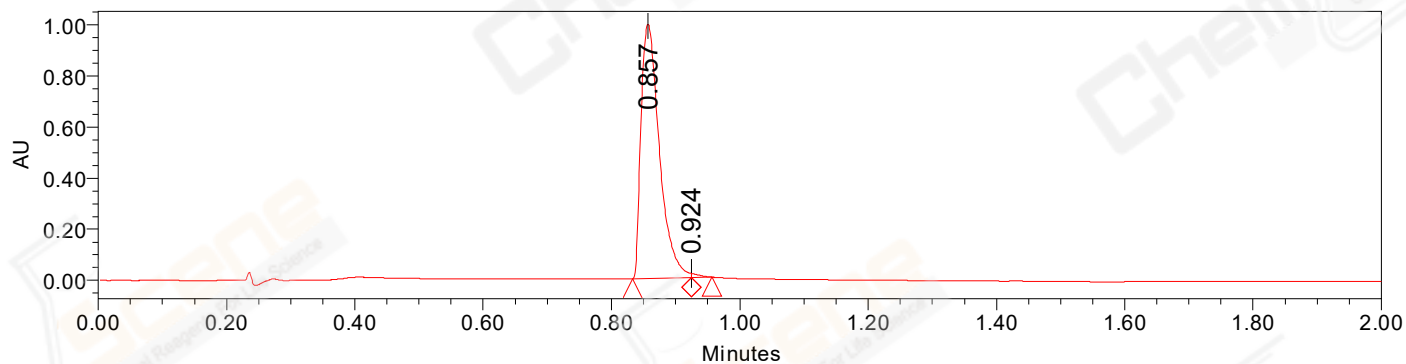
Acquired By: LY  
Date Acquired: 8/27/2021 1:32:37 PM CST  
Acq. Method Set: 1\_POS\_2MIN  
Date Processed: 8/30/2021 8:57:20 AM CST,  
Processing Method: PDA\_01, PDA\_02, MS\_scan  
Channel Name: PDA Ch1 214nm@4.8nm, MS TIC,  
Column Name: Poroshell 120 EC-C18 A-RP-657

### Auto-Scaled Chromatogram



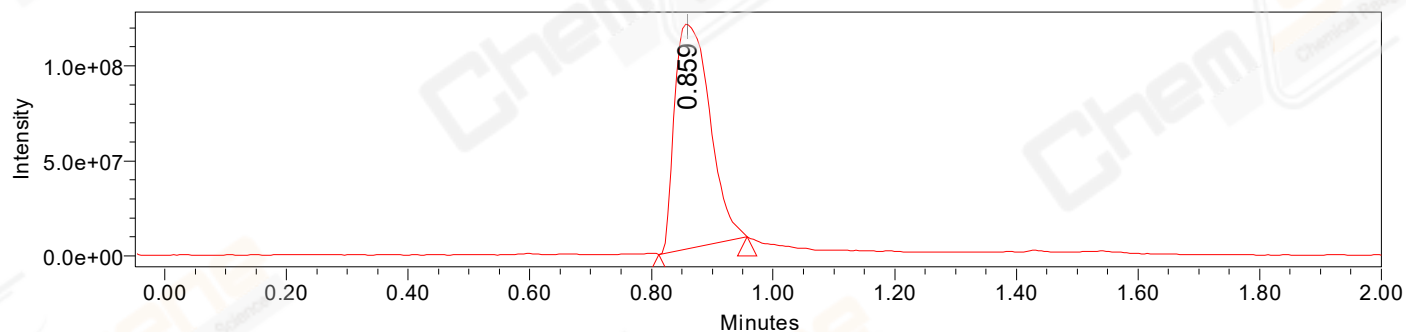
Processed Channel Descr. PDA Ch2 254nm@4.8nm

### Auto-Scaled Chromatogram



Processed Channel Descr. PDA Ch1 214nm@4.8nm

### Auto-Scaled Chromatogram



Processed Channel Descr. ACQ-SQD2 1: MS Scan MS TIC, Smoothed by 9 point Savitzky-Golay Filter., Time offset by -0.053 mins. (1: 150.00-1000.00 ES+, Centroid, CV=30)

Peak Results  
Channel Name: PDA Ch2 254nm@4.8nm

	RT	Width (sec)	Area	Height	% Area	Base Peak (Combined) (m/z)	Channel Name
1	0.593	2.700	1089	688	0.19	152.30	PDA Ch2 254nm@4.8nm
2	0.650	1.900	694	772	0.12	212.36	PDA Ch2 254nm@4.8nm
3	0.857	5.100	553915	273984	98.20	363.19	PDA Ch2 254nm@4.8nm
4	0.919	2.650	7116	7692	1.26	363.20	PDA Ch2 254nm@4.8nm
5	1.191	2.450	1245	907	0.22	316.59	PDA Ch2 254nm@4.8nm

Peak Results  
Channel Name: PDA Ch1 214nm@4.8nm

	RT	Width (sec)	Area	Height	% Area	Base Peak (Combined) (m/z)	Channel Name
1	0.857	5.450	1979437	995257	99.30	363.19	PDA Ch1 214nm@4.8nm
2	0.924	1.950	13982	16443	0.70	363.19	PDA Ch1 214nm@4.8nm

Peak Results  
Channel Name: MS TIC

	RT	Width (sec)	Area	Height	% Area	Base Peak (Combined) (m/z)	Channel Name
1	0.859	8.704	475224454	119009846	100.00	363.20	MS TIC

Match Plot

