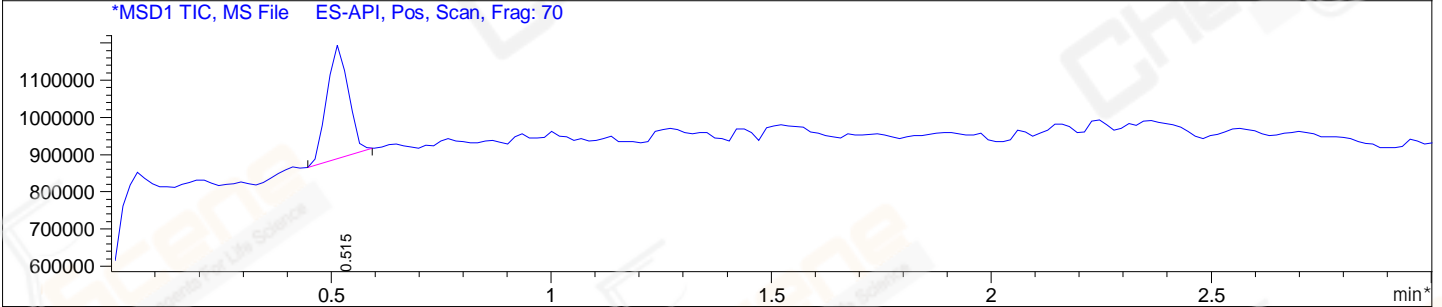
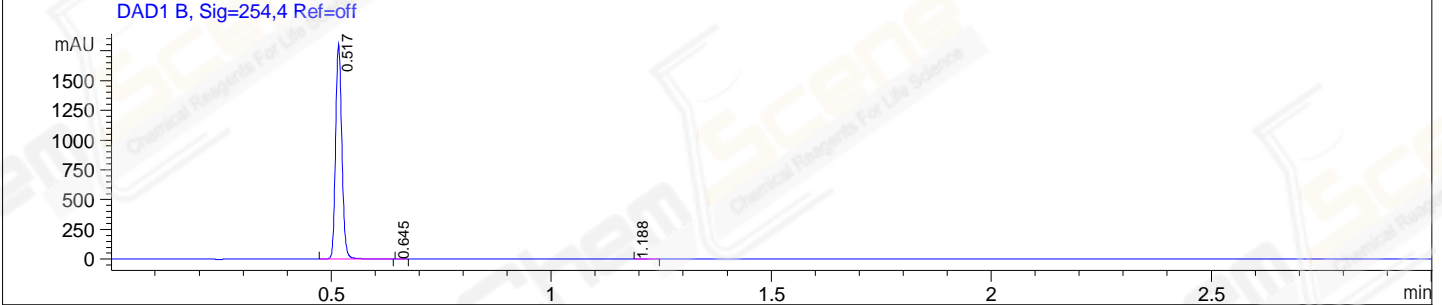
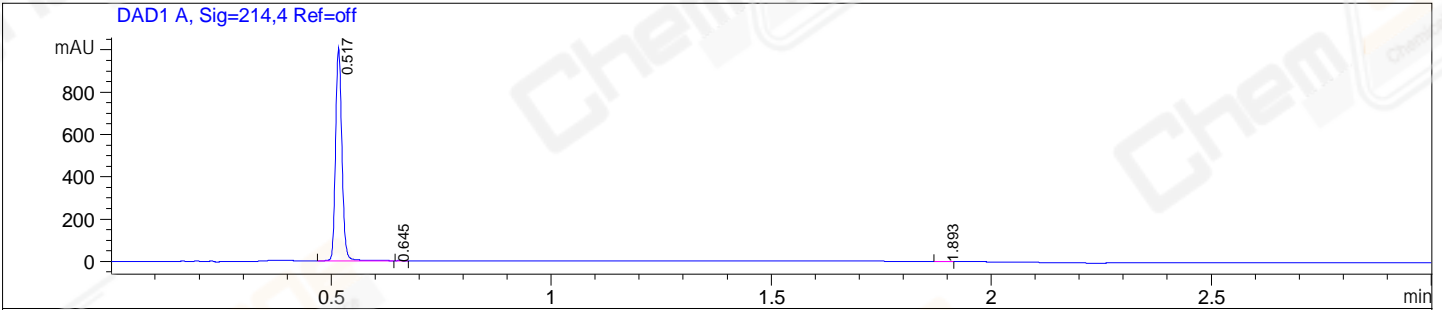


File E:\ChemStation\1\DATA\2024\2024-03\2024-03-27\CPK2024-326-114541-UPLC-MS-10-029943.D
 Injection Date : 27-Mar-24, 09:55:38 Tgt Mass(EZX) :
 Sample Name : CPK2024-326-114541 Location : P1-B-02
 Acq. Operator : LY_2278 Inj : 1
 Spec. Reported : MS Integration Inj Volume : 0.8 ul
 Acq. Method : E:\ChemStation\1\Methods\1-POS-UPLC3.0MIN(1.2)(0-2000).M
 Analysis Method : E:\CHEMSTATION\1\METHODS\1-POS-UPLC3.0MIN(1.2)(0-2000).M
 CAS NO. : 103-90-2 WalkUp method: '1-POS-3MIN(0-2000)' Project: CPK2024
 Method Info : Mobile Phase: A: water(0.01%TFA) B:ACN(0.01%TFA)
 Gradient: 5% to 95%B within 2.0 min
 Flow Rate :1.2ml/min
 Column :Shim-pack Scepter C18-120, 3.0*33mm,3um
 Oven Temperature : 45C



Integration Results for DAD1 A, Sig=214,4 Ref=off

RetTim	Width	Area	Height	Area%
0.52	0.02	1006.65	1002.64	99.93
0.64	0.02	0.20	0.03	0.02
1.89	0.02	0.48	0.37	0.05

Integration Results for DAD1 B, Sig=254,4 Ref=off

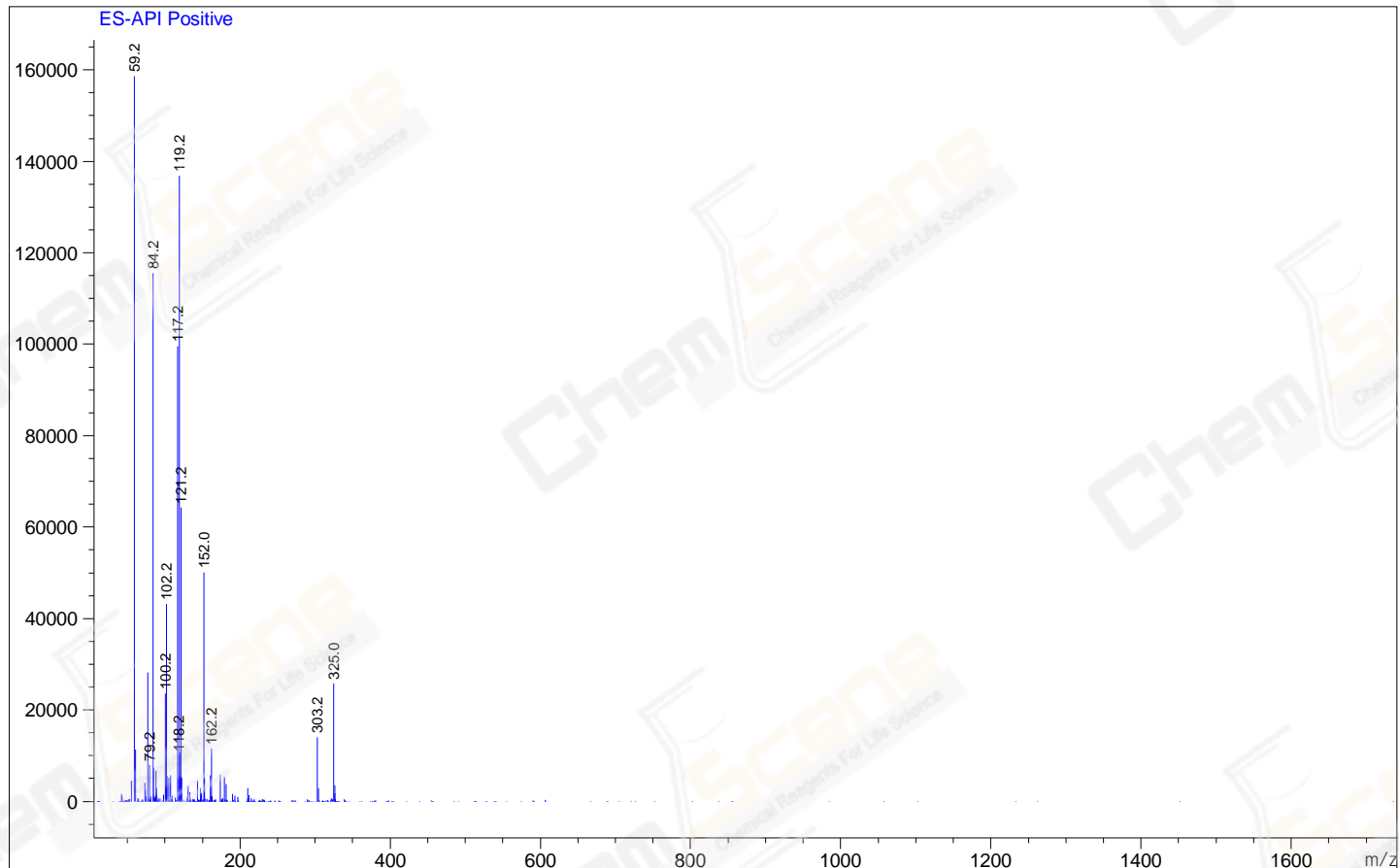
RetTim	Width	Area	Height	Area%
0.52	0.02	1786.21	1798.21	99.98
0.64	0.01	0.25	0.02	0.01
1.19	0.02	0.14	-0.04	0.01

Integration Results for MSD1 TIC, MS File

RetTim	Width	Area	Height	Area%
0.51	0.05	1033125.13	303820.34	100.00

Ret. Time: 0.51

<<<< POSITIVE SPECTRA >>>>



*** End of Report ***