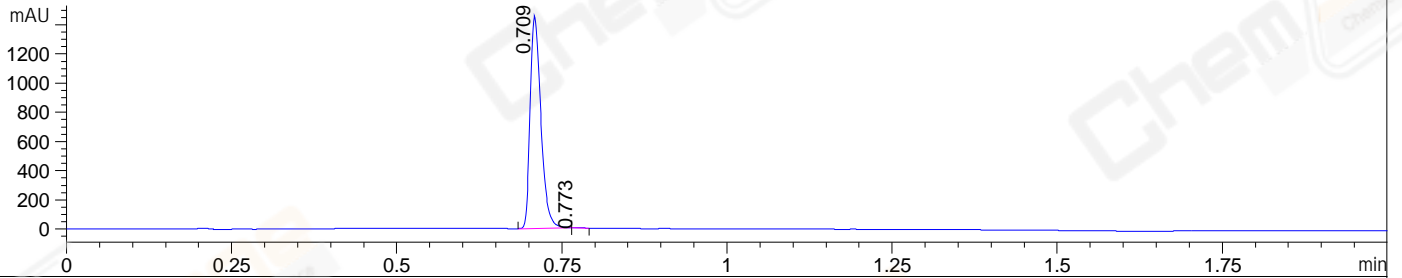
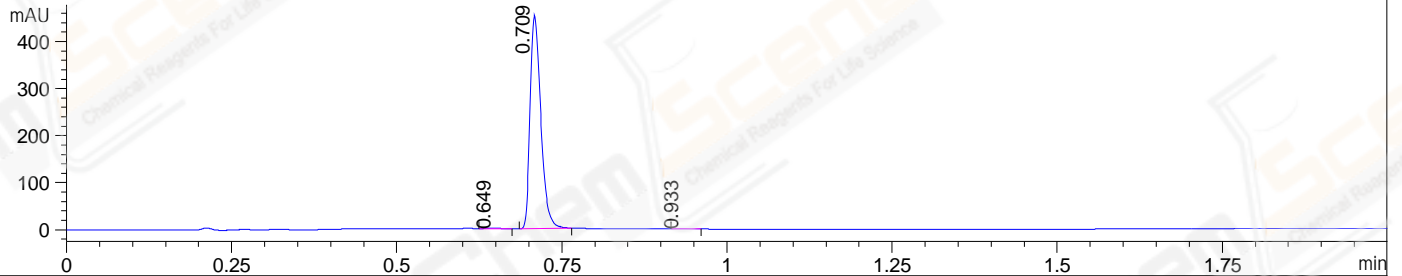


File ..09-05\CPK2022-905-11455-UPLC-MS-04-600642.D Tgt Mass (EZX):
 Injection Date : 05-Sep-22, 23:34:45 Seq. Line : 0
 Sample Name : CPK2022-905-11455 Location : P2-C-07
 Acq. Operator : LY_2278 Inj : 1
 Spec. Reported : MS Integration Inj Volume : 0.5 ul
 Acq. Method : E:\Chem32\1\Methods\1-POS-UPLC2.0MIN(0.8)(150-1000).M
 Analysis Method : E:\CHEM32\1\METHODS\1-POS-UPLC2.0MIN(0.8)(150-1000).M
 CAS NO. : 1208315-24-5 WalkUp method: '1-POS-2MIN' Project: BIZ2022
 Method Info : Mobile Phase: A: water(0.01%TFA) B:ACN(0.01%TFA)
 Gradient: 5% to 95%B within 1.3 min
 Flow Rate : 0.8ml/min
 Column :Poroshell 120 EC- C18, 2.1*50mm,1.9um
 Oven Temperature : 45C

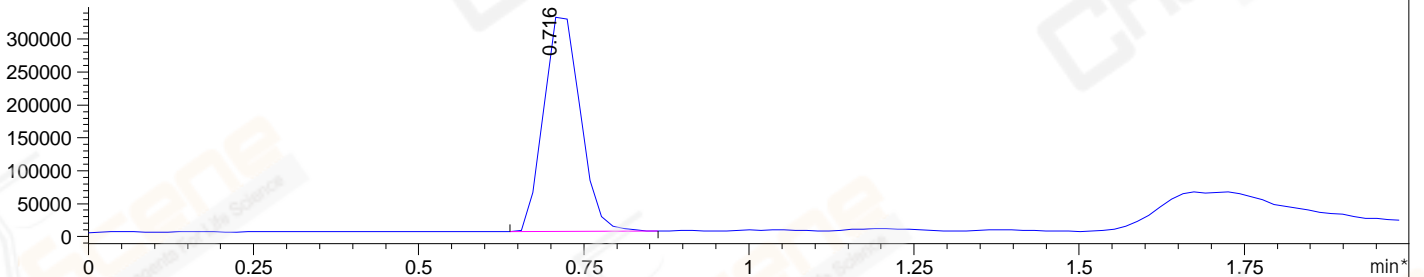
DAD1 A, Sig=214,4 Ref=off



DAD1 B, Sig=254,4 Ref=off



*MSD1 TIC, MS File ES-API, Pos, Scan, Frag: 70



Integration Results for DAD1 A, Sig=214,4 Ref=off

RetTim	Width	Area	Height	Area%	MS (+)
0.71	0.02	1646.25	1451.19	99.91	415
0.77	0.01	1.46	2.10	0.09	162

Integration Results for DAD1 B, Sig=254,4 Ref=off

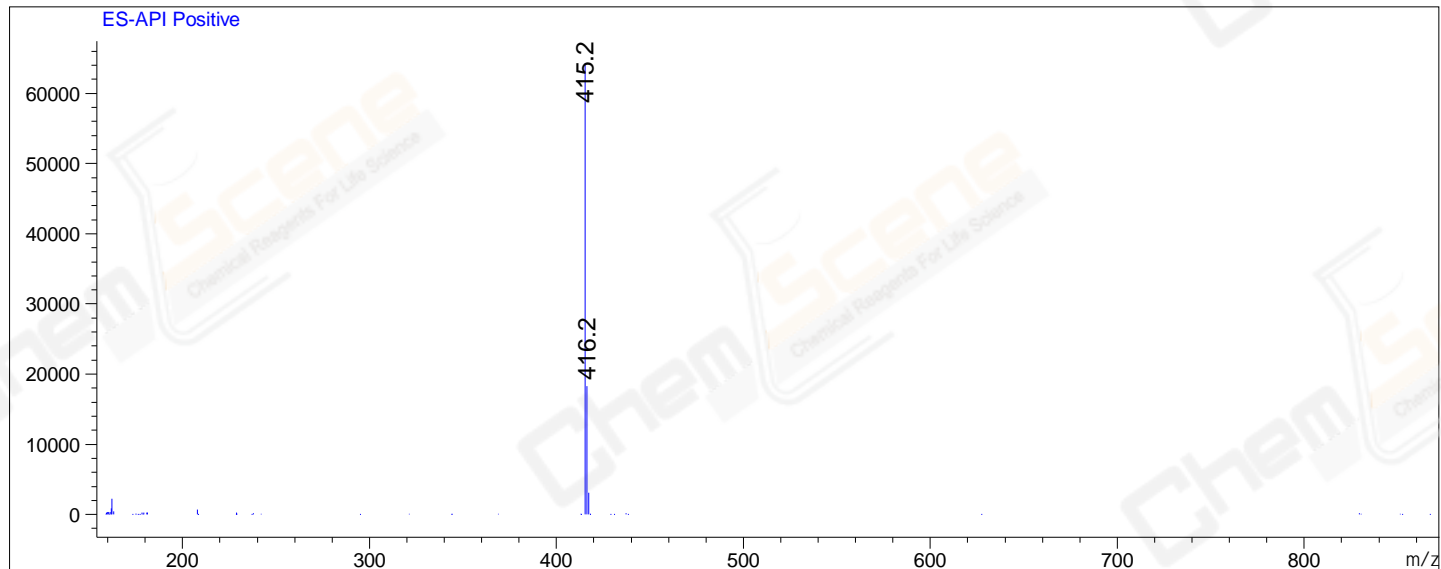
RetTim	Width	Area	Height	Area%	MS (+)
0.65	0.02	1.36	0.90	0.26	415
0.71	0.02	512.64	452.46	99.55	415
0.93	0.02	0.95	0.82	0.18	162

Integration Results for MSD1 TIC, MS File

RetTim	Width	Area	Height	Area%	MS (+)
0.72	0.06	1259510.25	340885.78	100.00	415

Ret. Time: 0.72

<<<< POSITIVE SPECTRA >>>>



*** End of Report ***