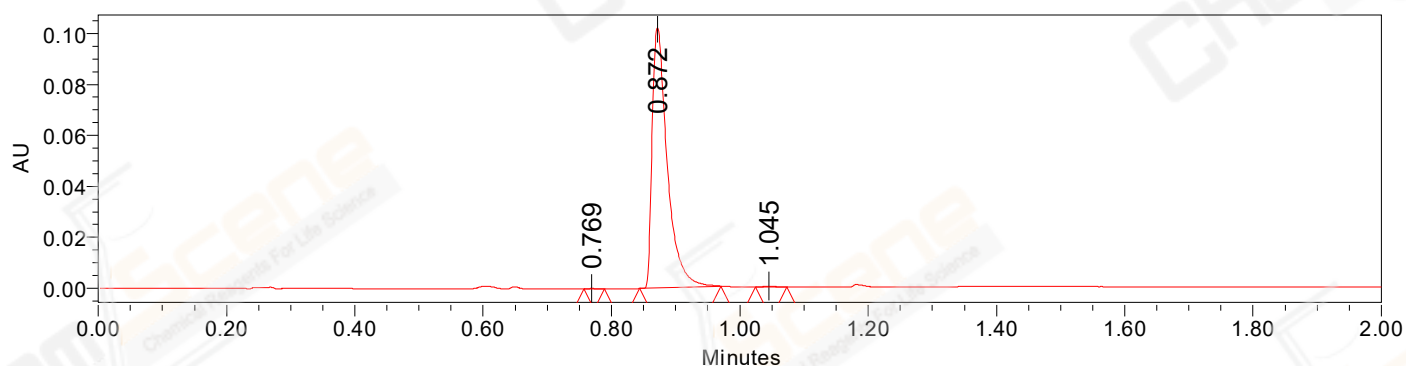


SAMPLE INFORMATION

CAS NO.: 2229711-68-4
Sample information:
Vial: 2:A,2
Injection #: 1
Injection Volume: 0.20 ul
Run Time: 2.8 Minutes
Sample Set Name: 20210906

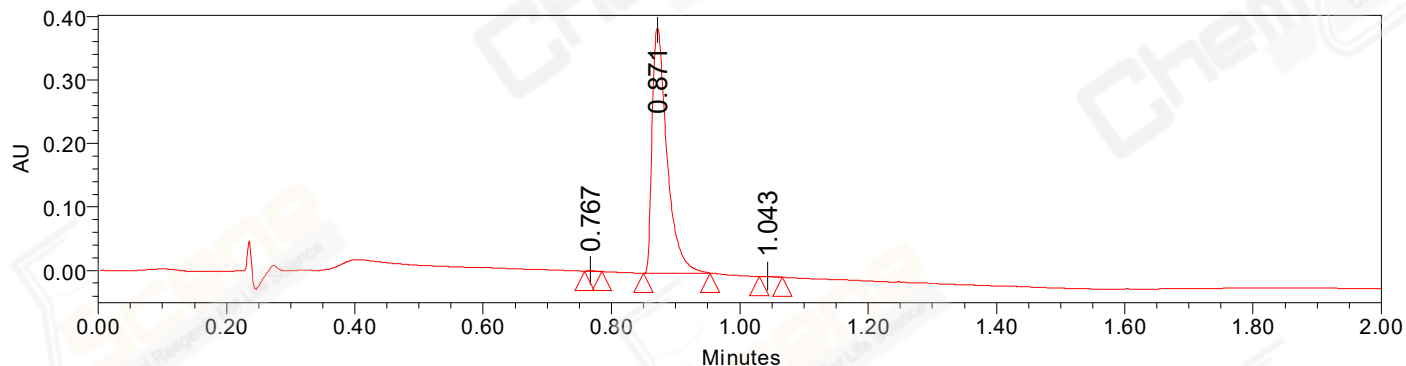
Acquired By: LY
Date Acquired: 9/6/2021 9:27:07 AM CST
Acq. Method Set: 1_POS_2MIN
Date Processed: 9/6/2021 11:10:59 AM CST,
Processing Method: PDA_01, MS_scan
Channel Name: PDA Ch1 214nm@4.8nm, MS TIC,
Column Name: Poroshell 120 EC-C18 A-RP-657

Auto-Scaled Chromatogram



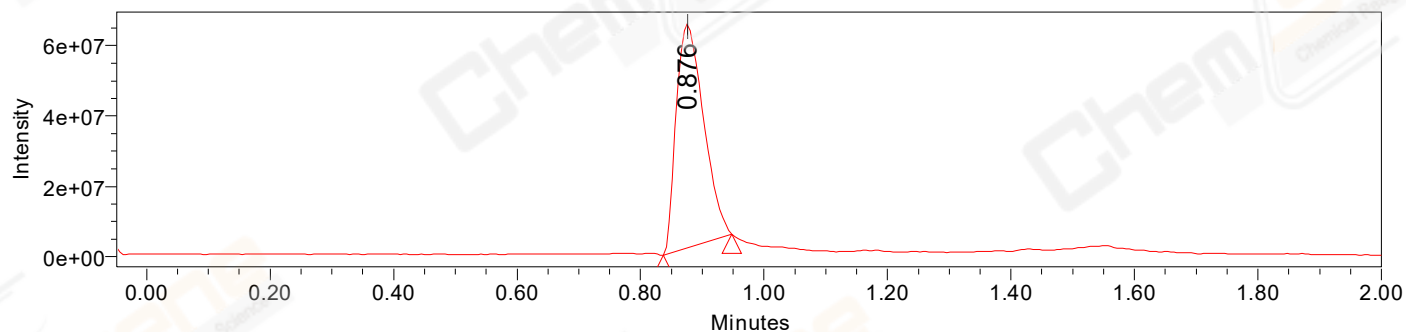
Processed Channel Descr. PDA Ch2 254nm@4.8nm

Auto-Scaled Chromatogram



Processed Channel Descr. PDA Ch1 214nm@4.8nm

Auto-Scaled Chromatogram



Processed Channel Descr. ACQ-SQD2 1: MS Scan MS TIC, Smoothed by 9 point Savitzky-Golay Filter., Time offset by -0.053 mins. (1: 150.00-1000.00 ES+, Centroid, CV=30)

Peak Results
Channel Name: PDA Ch2 254nm@4.8nm

	RT	Width (sec)	Area	Height	% Area	Base Peak (Combined) (m/z)	Channel Name
1	0.769	1.950	237	259	0.14	159.20	PDA Ch2 254nm@4.8nm
2	0.872	7.550	166862	102046	99.60	363.15	PDA Ch2 254nm@4.8nm
3	1.045	2.950	427	299	0.25	228.35	PDA Ch2 254nm@4.8nm

Peak Results
Channel Name: PDA Ch1 214nm@4.8nm

	RT	Width (sec)	Area	Height	% Area	Base Peak (Combined) (m/z)	Channel Name
1	0.767	1.600	807	921	0.13	159.08	PDA Ch1 214nm@4.8nm
2	0.871	6.200	618574	385338	99.74	372.08	PDA Ch1 214nm@4.8nm
3	1.043	2.150	793	651	0.13	228.36	PDA Ch1 214nm@4.8nm

Peak Results
Channel Name: MS TIC

	RT	Width (sec)	Area	Height	% Area	Base Peak (Combined) (m/z)	Channel Name
1	0.876	6.674	195780435	63446482	100.00	363.15	MS TIC

Match Plot

