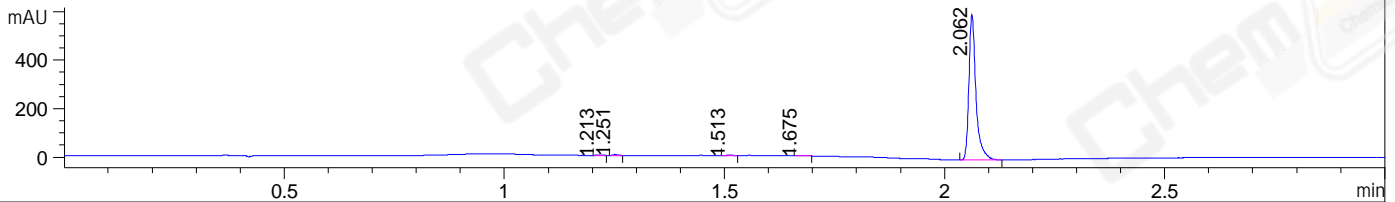
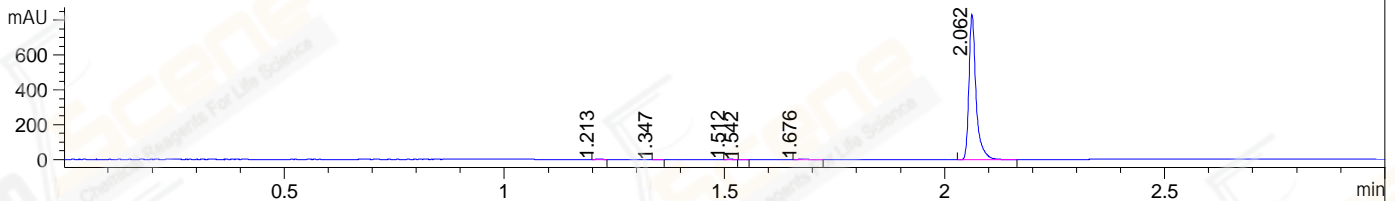


File ..DATA\2020\20200510\951\CPK2020-509-11514-.D Tgt Mass (CHM):
 Injection Date : 10 May 20 11:31 pm +0800 Seq. Line : 74
 Sample Name : CPK2020-509-11514 Location : P2-F-02
 Acq. Operator : ZJ_1432 Inj : 1
 Spec. Reported : MS Integration Inj Volume : 0.4 ul
 Acq. Method : D:\Chem32\1\data\2020\20200510\951\1-POS-3MIN.M
 Analysis Method : D:\CHEM32\1\DATA\2020\20200510\951\1-POS-3MIN.M
 Catalog No : CS-0581
 Method Info : Mobile Phase: A: water(0.01%TFA) B:ACN(0.01%TFA)
 Gradient: 5% to 95%B within 1.3 min
 Flow Rate :1.8ml/min
 Column :SunFire C18, 4.6*50mm,3.5um A-RP-607
 Oven Temperature : 45□

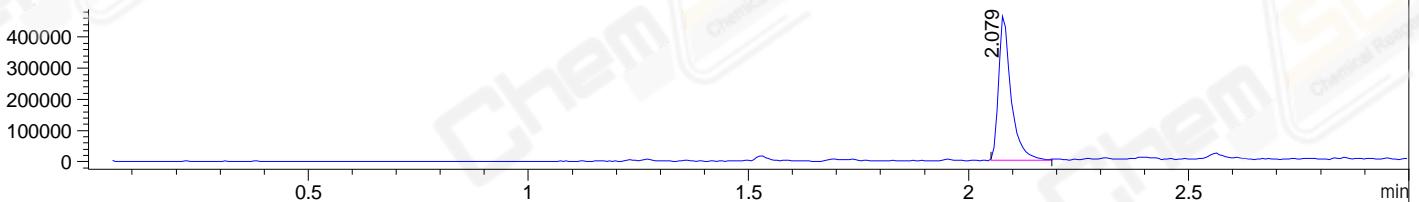
DAD1 B, Sig=214,4 Ref=off



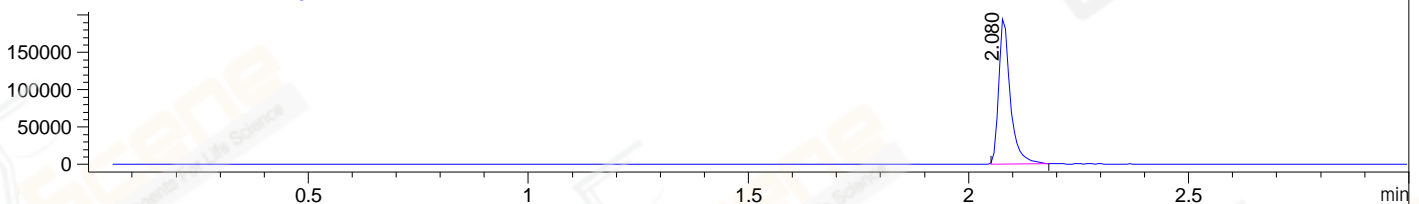
DAD1 C, Sig=254,4 Ref=off



MSD1 TIC, MS File ES-API, Pos, Scan, Frag: 70



Ion 457, MSD1 457, Target Mass 456 +H Positive, EIC=456.7:457.7



Integration Results for DAD1 B, Sig=214,4 Ref=off

RetTim	Width	Area	Height	Area%	MS (+)
1.21	0.02	2.17	2.31	0.32	569
1.25	0.01	2.62	3.33	0.39	492
1.51	0.01	1.51	1.79	0.22	485
1.68	0.02	2.27	1.95	0.34	269
2.06	0.02	665.49	600.68	98.73	457

Integration Results for DAD1 C, Sig=254,4 Ref=off

RetTim	Width	Area	Height	Area%	MS (+)
1.21	0.01	1.79	2.33	0.19	ND
1.35	0.01	0.38	0.47	0.04	ND
1.51	0.01	2.18	2.89	0.23	485
1.54	0.01	0.29	0.45	0.03	485
1.68	0.03	4.60	3.01	0.49	269
2.06	0.02	937.44	836.68	99.02	457

Integration Results for MSD1 TIC, MS File

2.08 0.03 923142.50 469286.50 100.00 457

RetTim	Width	Area	Height	Area%	MS (+)
--------	-------	------	--------	-------	--------

Ret. Time: 2.08

<<<< POSITIVE SPECTRA >>>>

ES-API Positive

