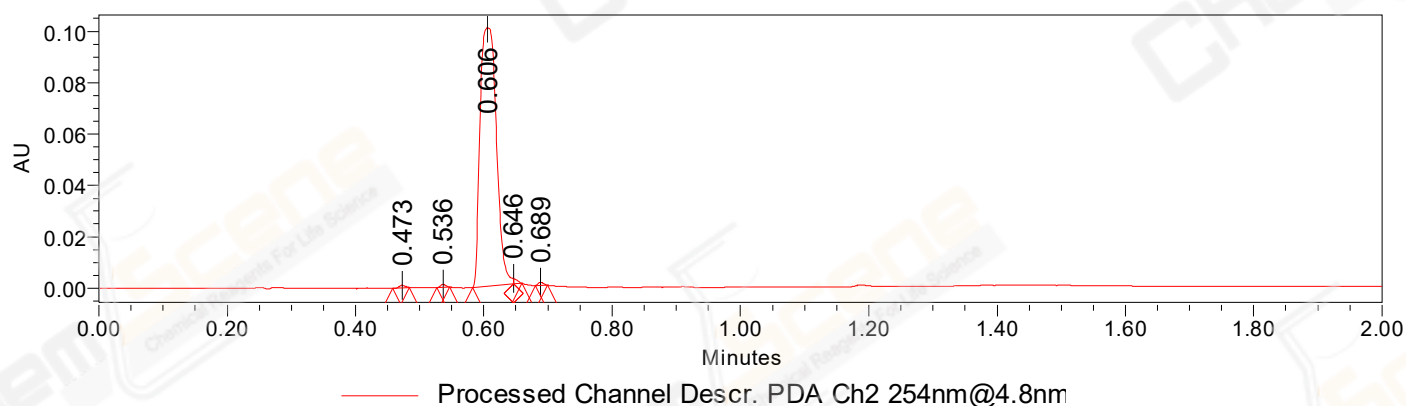


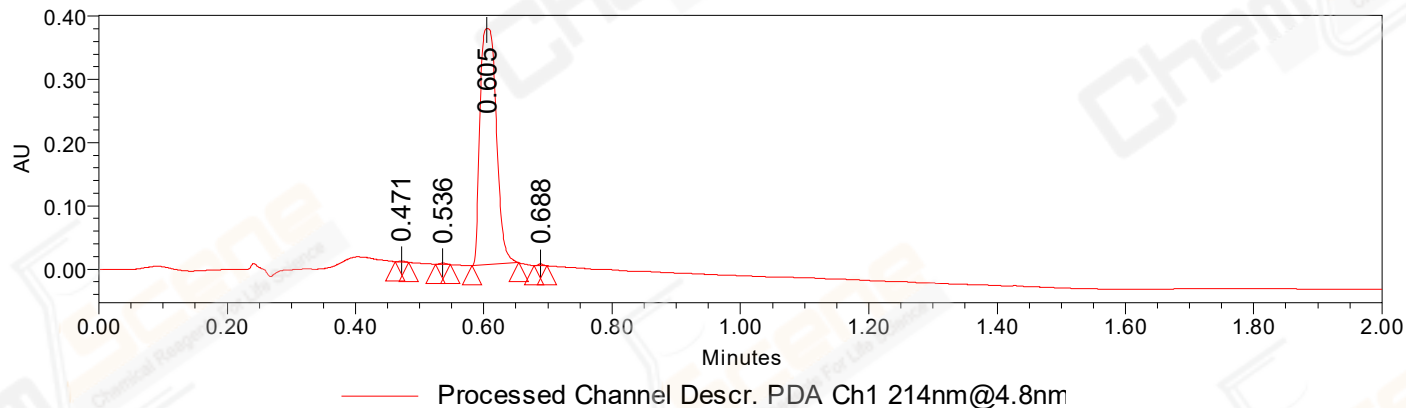
SAMPLE INFORMATION

Sample Name:	BIZ2021-918-WLQ6	Acquired By:	LY
CAS NO.:	827318-97-8	Date Acquired:	9/22/2021 9:04:52 AM CST
Vial:	1:C,6	Acq. Method Set:	1_POS_2MIN
Injection #:	1	Date Processed:	9/22/2021 10:47:23 AM CST,
Injection Volume:	0.30 ul	Processing Method:	PDA_01, MS_scan
Run Time:	2.8 Minutes	Channel Name:	PDA Ch1 214nm@4.8nm, MS TIC,
Sample Set Name:	20210922	Column Name:	Poroshell 120 EC-C18 A-RP-657

Auto-Scaled Chromatogram



Auto-Scaled Chromatogram



Peak Results

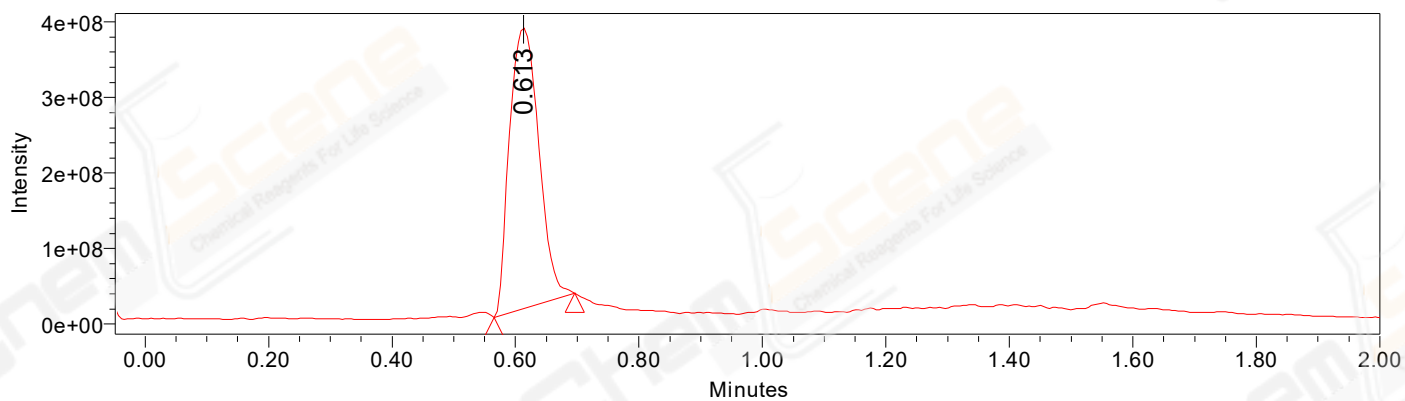
Channel Name: PDA Ch2 254nm@4.8nm

	RT	Width (sec)	Area	Height	% Area	Base Peak (Combined) (m/z)	Channel Name
1	0.473	1.500	617	979	0.34	184.65	PDA Ch2 254nm@4.8nm
2	0.536	1.200	700	1222	0.39	265.20	PDA Ch2 254nm@4.8nm
3	0.606	3.800	177565	100558	98.36	193.06	PDA Ch2 254nm@4.8nm
4	0.646	0.800	926	2167	0.51	475.55	PDA Ch2 254nm@4.8nm
5	0.689	1.150	721	1267	0.40	228.61	PDA Ch2 254nm@4.8nm

Peak Results
Channel Name: PDA Ch1 214nm@4.8nm

	RT	Width (sec)	Area	Height	% Area	Base Peak (Combined) (m/z)	Channel Name
1	0.471	1.250	946	1539	0.14	184.65	PDA Ch1 214nm@4.8nm
2	0.536	1.350	1522	2577	0.23	265.20	PDA Ch1 214nm@4.8nm
3	0.605	4.350	659778	373727	99.40	193.06	PDA Ch1 214nm@4.8nm
4	0.688	1.200	1483	2720	0.22	228.62	PDA Ch1 214nm@4.8nm

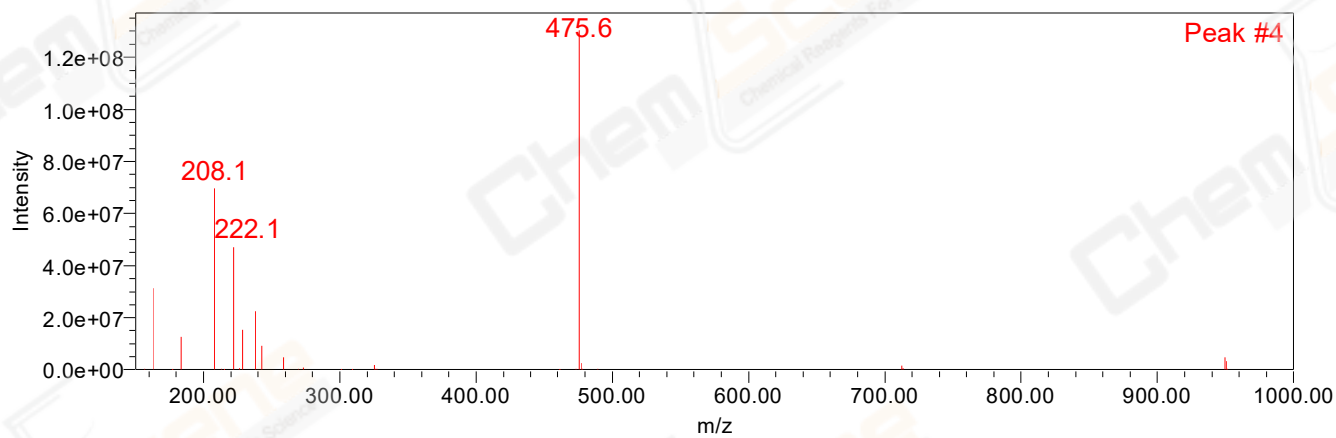
Auto-Scaled Chromatogram



Peak Results
Channel Name: MS TIC

RT	Width (sec)	Area	Height	% Area	Base Peak (Combined) (m/z)	Channel Name	
1	0.613	7.835	1232962680	372076966	100.00	475.50	MS TIC

Match Plot



Retention Time 0.613 Channel Name MS TIC