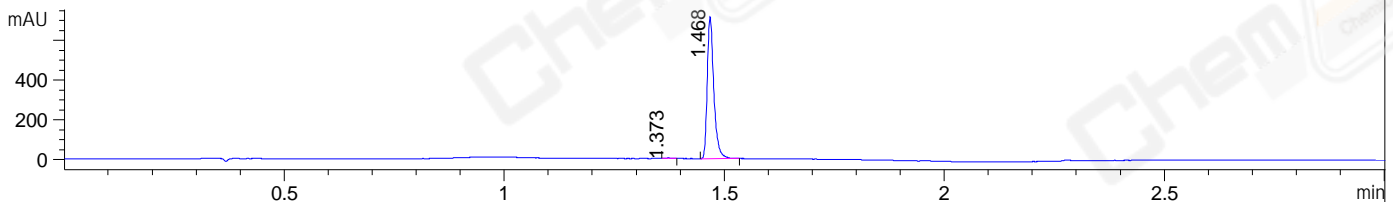
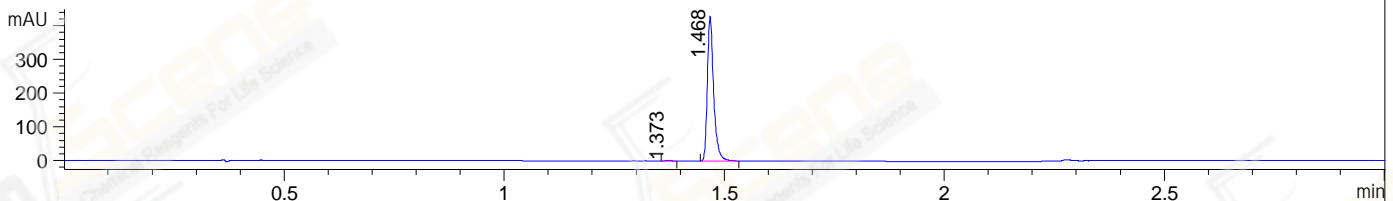


File ..\DATA\2019\20191113\758\CPK2019-N11-11564.D Tgt Mass (CHM):  
Injection Date : 13 Nov 19 6:20 pm +0800 Seq. Line : 116  
Sample Name : CPK2019-N11-11564 Location : P1-D-09  
Acq. Operator : ZJ\_1432 Inj : 1  
Spec. Reported : MS Integration Inj Volume : 1 ul  
Acq. Method : D:\Chem32\1\data\2019\20191113\758\1-POS-3MIN.M  
Analysis Method : D:\CHEM32\1\DATA\2019\20191113\758\1-POS-3MIN.M  
Catalog No : CS-1406 Batch# 11564  
Method Info : Mobile Phase: A: water(0.01%TFA) B:ACN(0.01%TFA)  
Gradient: 5% to 95%B within 1.3 min  
Flow Rate :1.8ml/min  
Column :SunFire C18, 4.6\*50mm,3.5um A-RP-433  
Oven Temperature : 45□

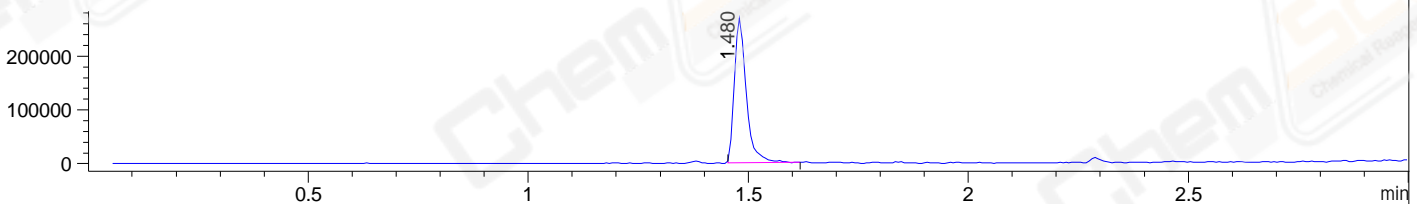
DAD1 B, Sig=214,4 Ref=off



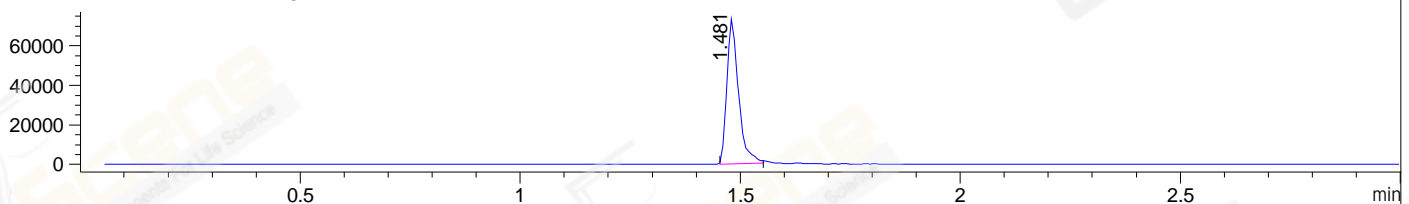
DAD1 C, Sig=254,4 Ref=off



MSD1 TIC, MS File ES-API, Pos, Scan, Frag: 70



Ion 558, MSD1 558, Target Mass 557 +H Positive, EIC=557.7:558.7



## Integration Results for DAD1 B, Sig=214,4 Ref=off

RetTim	Width	Area	Height	Area%	MS (+)
1.37	0.01	2.57	3.16	0.35	ND
1.47	0.02	738.14	716.52	99.65	280

## Integration Results for DAD1 C, Sig=254,4 Ref=off

RetTim	Width	Area	Height	Area%	MS (+)
1.37	0.01	1.55	1.84	0.36	ND
1.47	0.02	424.17	429.69	99.64	280

## Integration Results for MSD1 TIC, MS File

RetTim	Width	Area	Height	Area%	MS (+)
1.48	0.03	516350.09	269569.16	100.00	280

Ret. Time: 1.48

<<<< POSITIVE SPECTRA >>>>

ES-API Positive

