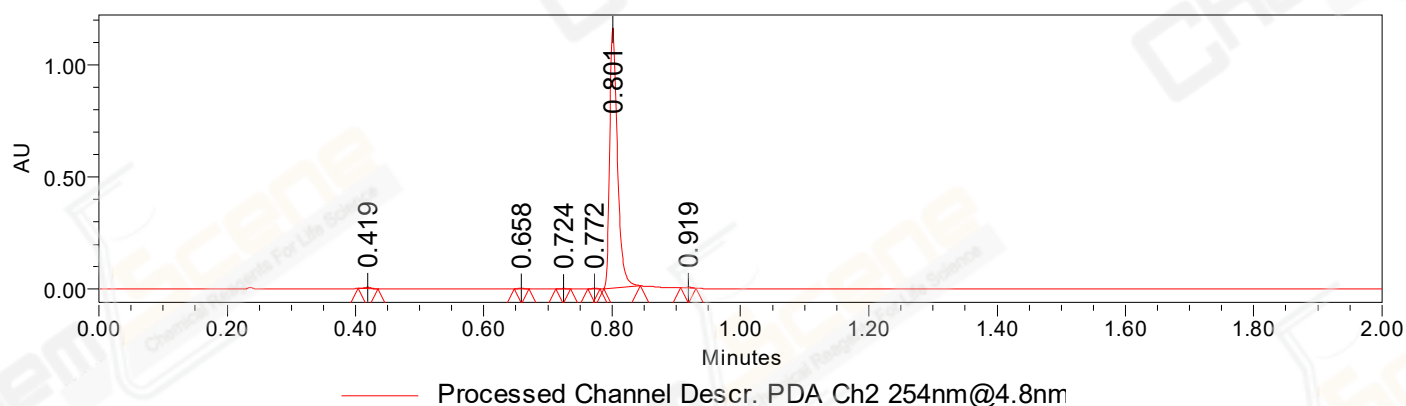


## SAMPLE INFORMATION

Sample Name:	BIZ2021-923-WLQ22	Acquired By:	LY
CAS NO.:	871307-18-5	Date Acquired:	9/24/2021 10:38:50 AM CST
Vial:	1:B,3	Acq. Method Set:	1_POS_2MIN
Injection #:	1	Date Processed:	9/24/2021 1:54:34 PM CST,
Injection Volume:	0.50 ul	Processing Method:	PDA_01, MS_scan
Run Time:	2.8 Minutes	Channel Name:	MS TIC, PDA Ch2 254nm@4.8nm
Sample Set Name:	20210924	Column Name:	Poroshell 120 EC-C18 A-RP-657

### Auto-Scaled Chromatogram

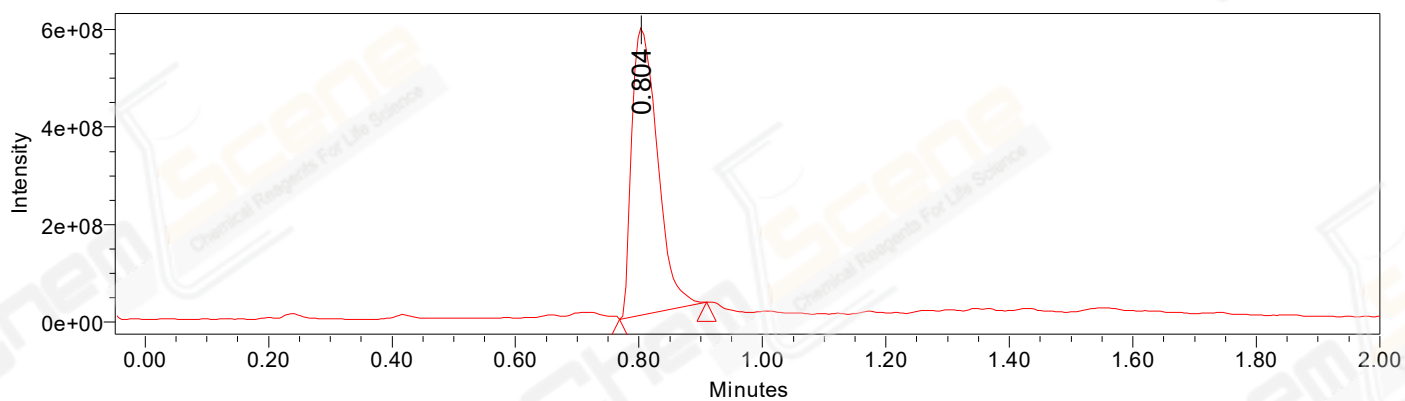


#### Peak Results

Channel Name: PDA Ch2 254nm@4.8nm

	RT	Width (sec)	Area	Height	% Area	Base Peak (Combined) (m/z)	Channel Name
1	0.419	1.850	4833	5967	0.49	151.07	PDA Ch2 254nm@4.8nm
2	0.658	1.350	1932	3006	0.19	207.22	PDA Ch2 254nm@4.8nm
3	0.724	1.350	1657	2517	0.17	173.59	PDA Ch2 254nm@4.8nm
4	0.772	1.150	2194	3945	0.22	216.12	PDA Ch2 254nm@4.8nm
5	0.801	3.450	978507	1160607	98.68	152.05	PDA Ch2 254nm@4.8nm
6	0.919	1.450	2443	3700	0.25	204.02	PDA Ch2 254nm@4.8nm

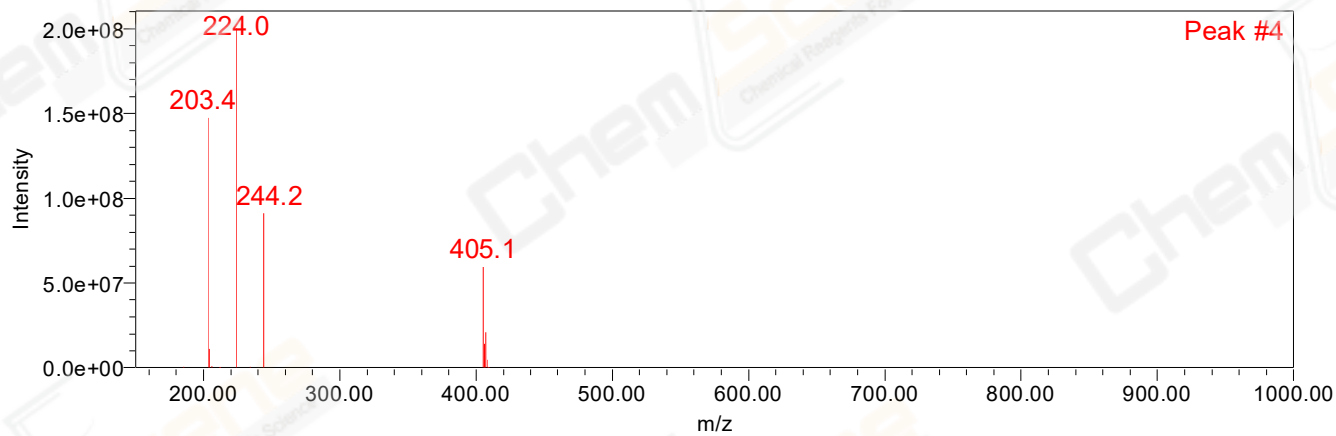
### Auto-Scaled Chromatogram



Peak Results  
Channel Name: MS TIC

RT	Width (sec)	Area	Height	% Area	Base Peak (Combined) (m/z)	Channel Name	
1	0.804	8.415	1697915811	589066747	100.00	223.95	MS TIC

### Match Plot



Retention Time 0.804 Channel Name MS TIC