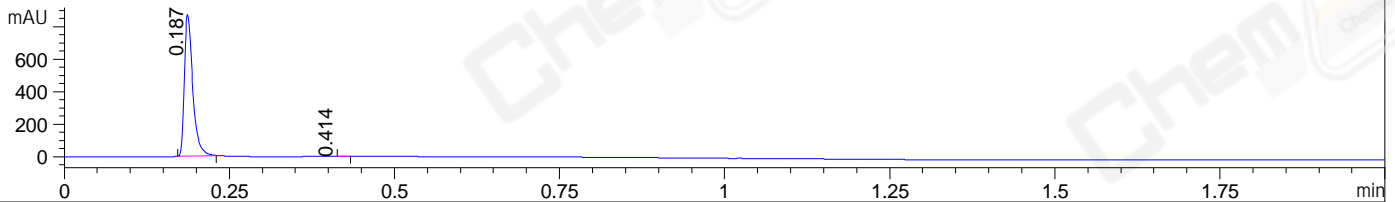
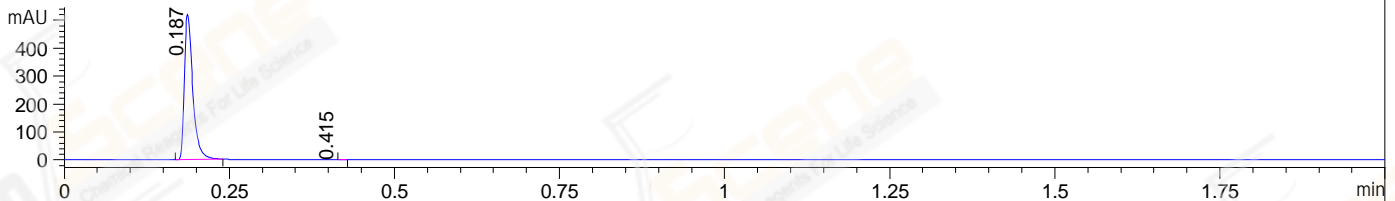


File ..ata\LY\2021-09-26\BIZ2021-925-SCH9-029607.D Tgt Mass (EZ):  
 Injection Date : 26 Sep 21 2:21 pm +0800 Seq. Line : 0  
 Sample Name : BIZ2021-925-SCH9 Location : P2-B-06  
 Acq. Operator : LY\_2278 Inj : 1  
 Spec. Reported : MS Integration Inj Volume : 1 ul  
 Acq. Method : D:\LCMS\Methods\1-POS-UPLC2.0MIN(0.8ML)-(150-1000).M  
 Analysis Method : D:\LCMS\METHODS\1-POS-UPLC2.0MIN(0.8ML)-(150-1000).M  
 CAS NO. : 22150-76-1 Walkup method: '1-POS-2MIN' Target:  
 Method Info : Mobile Phase: A: water(0.01%TFA) B:ACN(0.01%TFA)  
 Gradient: 5% to 95%B within 0.6 min  
 Flow Rate : 0.8ml/min  
 Column : Poroshell 120 EC- C18, 2.1\*50mm,1.9um A-RP-928  
 Oven Temperature : 45C

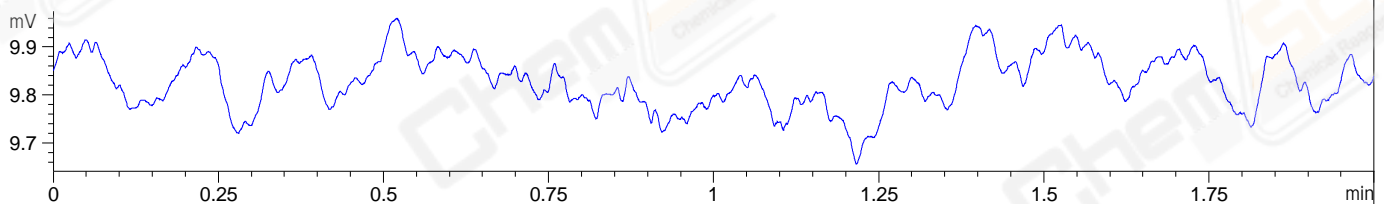
DAD1 A, Sig=214,4 Ref=off



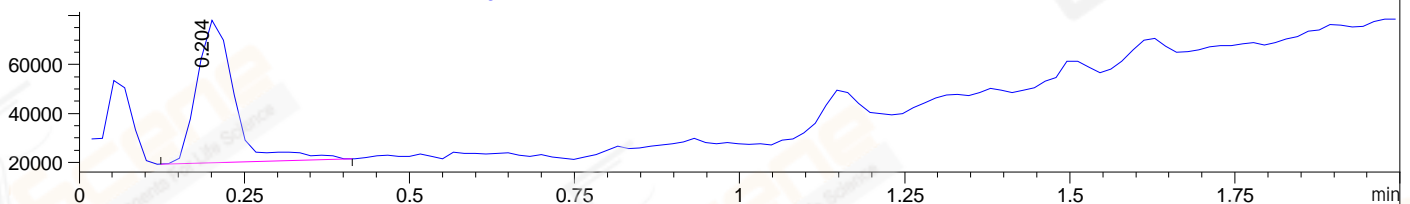
DAD1 B, Sig=254,4 Ref=off



ELS1 A, ELSD Signal



MSD1 TIC, MS File ES-API, Pos, Scan, Frag: 70



Integration Results for DAD1 A, Sig=214,4 Ref=off

RetTim	Width	Area	Height	Area%	MS (+)
0.19	0.01	771.49	872.91	99.89	238
0.41	0.01	0.86	0.07	0.11	161

Integration Results for DAD1 B, Sig=254,4 Ref=off

RetTim	Width	Area	Height	Area%	MS (+)
0.19	0.01	464.23	522.61	99.95	238
0.41	0.01	0.24	0.02	0.05	161

Integration Results for ELS1 A, ELSD Signal

RetTim	Width	Area	Height	Area%	MS (+)
--------	-------	------	--------	-------	--------

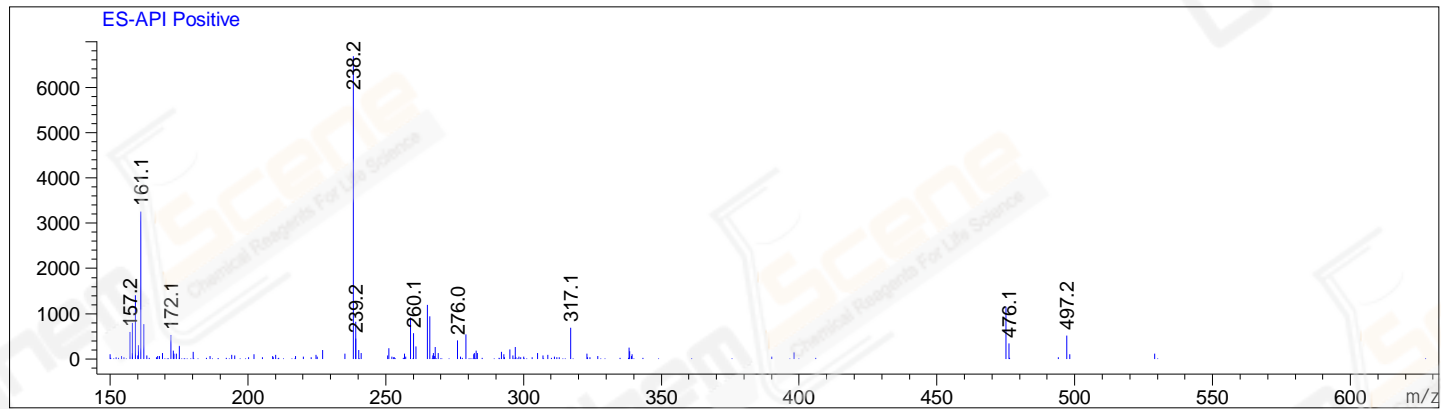
Integration Results for MSD1 TIC, MS File

RetTim	Width	Area	Height	Area%	MS (+)
--------	-------	------	--------	-------	--------



Ret. Time: 0.20

<<<< POSITIVE SPECTRA >>>>



\*\*\* End of Report \*\*\*