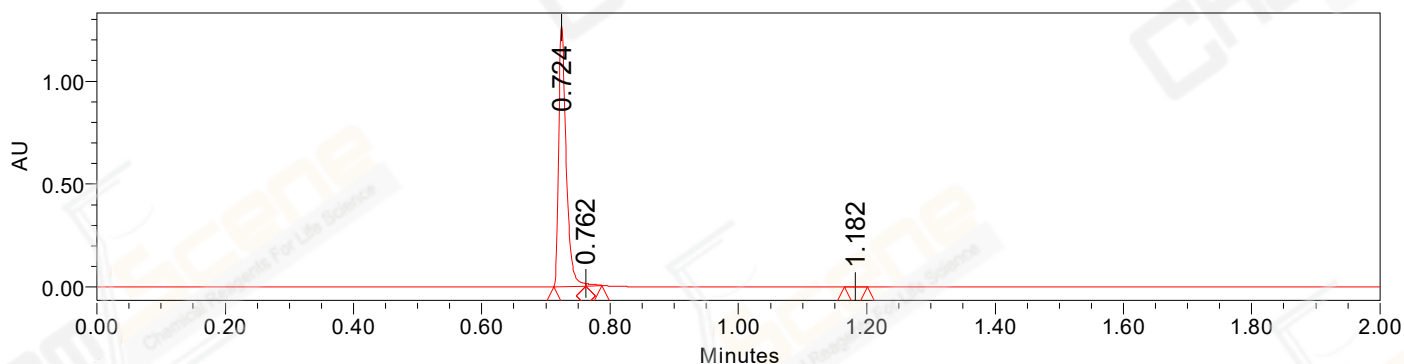


SAMPLE INFORMATION

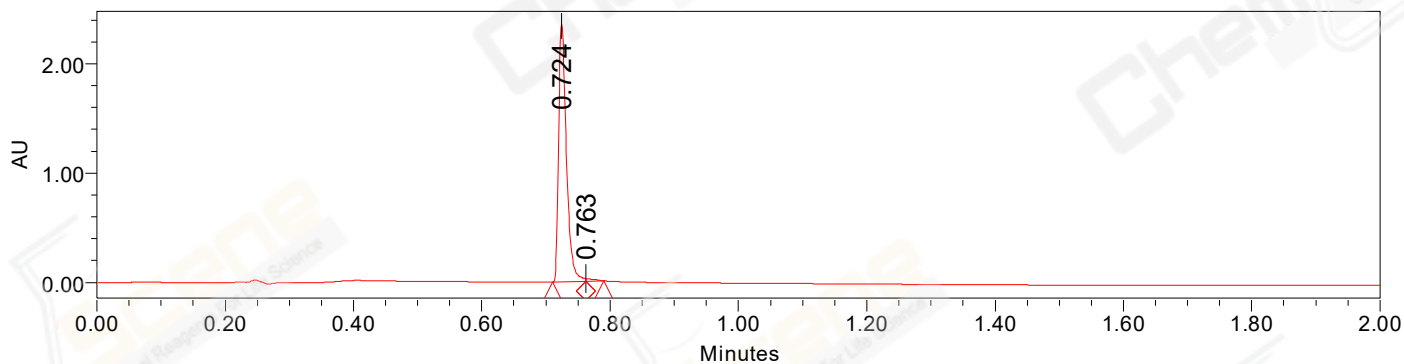
CAS NO.:	1817628-40-2	Acquired By:	LY
Sample information:		Date Acquired:	10/15/2021 11:25:08 AM CST
Vial:	1:B,5	Acq. Method Set:	1_POS_2MIN
Injection #:	1	Date Processed:	10/15/2021 5:49:35 PM CST,
Injection Volume:	0.50 ul	Processing Method:	PDA_01, MS_scan
Run Time:	2.8 Minutes	Channel Name:	PDA Ch1 214nm@4.8nm, MS TIC,
Sample Set Name:	20211015	Column Name:	Poroshell 120 EC-C18 A-RP-657

Auto-Scaled Chromatogram



— Processed Channel Descr. PDA Ch2 254nm@4.8nm

Auto-Scaled Chromatogram



— Processed Channel Descr. PDA Ch1 214nm@4.8nm

Peak Results

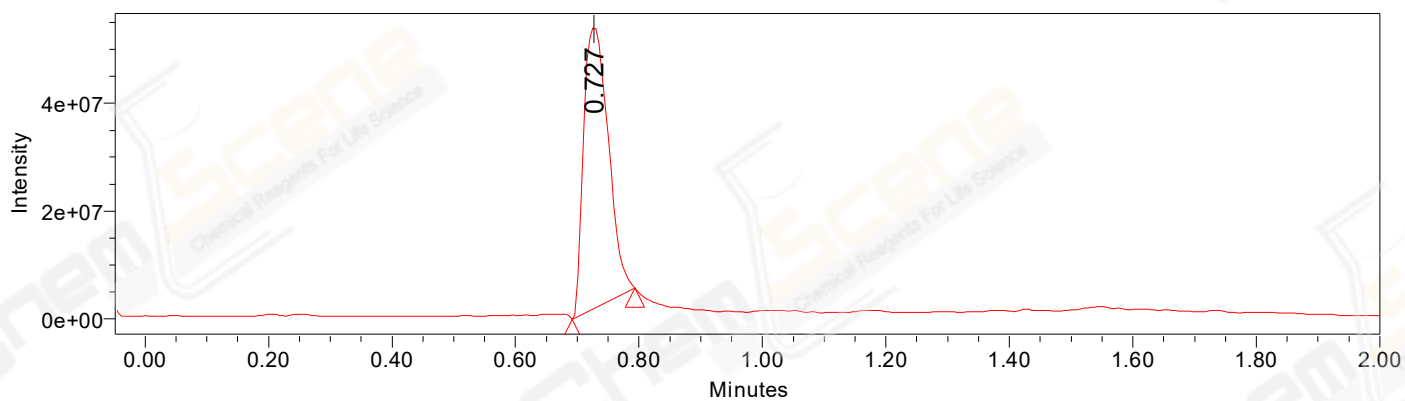
Channel Name: PDA Ch2 254nm@4.8nm

	RT	Width (sec)	Area	Height	% Area	Base Peak (Combined) (m/z)	Channel Name
1	0.724	3.000	1019411	1264188	98.99	334.13	PDA Ch2 254nm@4.8nm
2	0.762	1.550	9352	11365	0.91	348.19	PDA Ch2 254nm@4.8nm
3	1.182	2.150	1089	1242	0.11	348.19	PDA Ch2 254nm@4.8nm

Peak Results
Channel Name: PDA Ch1 214nm@4.8nm

	RT	Width (sec)	Area	Height	% Area	Base Peak (Combined) (m/z)	Channel Name
1	0.724	3.150	1979467	2357721	98.96	334.13	PDA Ch1 214nm@4.8nm
2	0.763	1.650	20903	24035	1.04	348.19	PDA Ch1 214nm@4.8nm

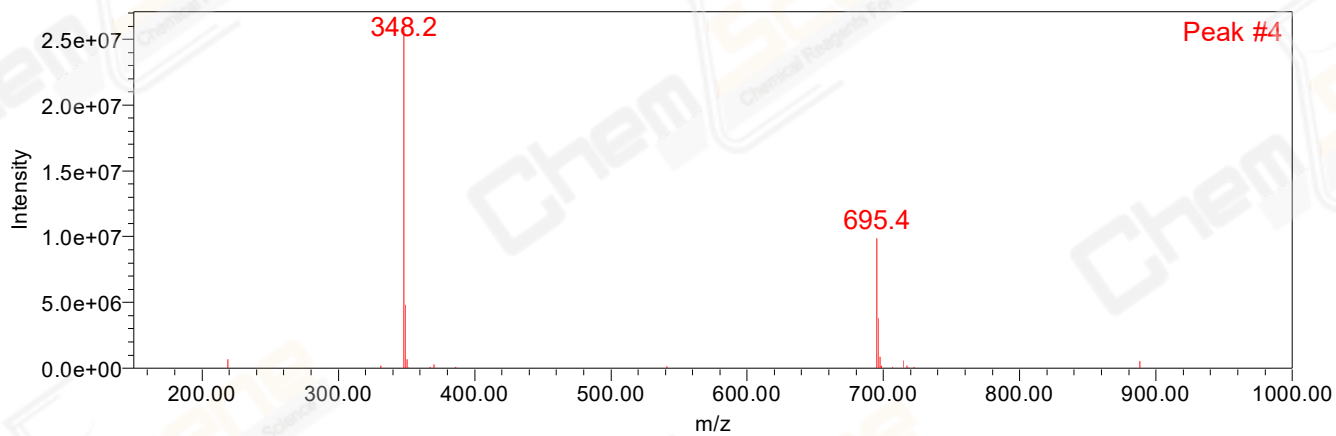
Auto-Scaled Chromatogram



Peak Results
Channel Name: MS TIC

RT	Width (sec)	Area	Height	% Area	Base Peak (Combined) (m/z)	Channel Name	
1	0.727	6.093	145145454	52262903	100.00	348.19	MS TIC

Match Plot



Retention Time 0.727 Channel Name MS TIC