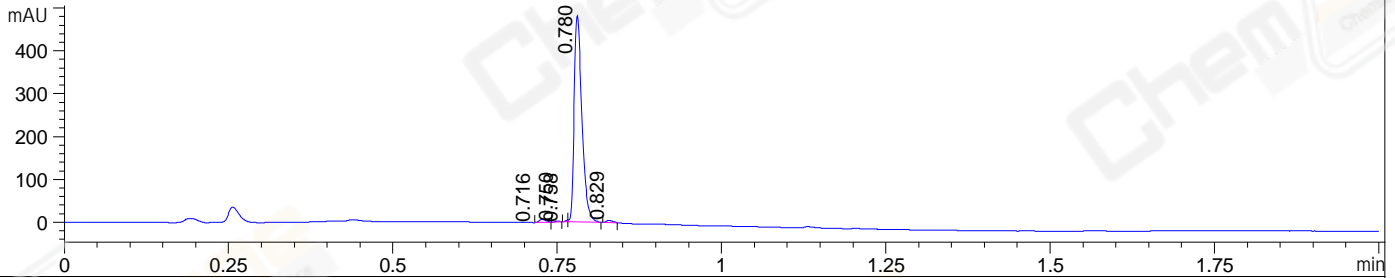
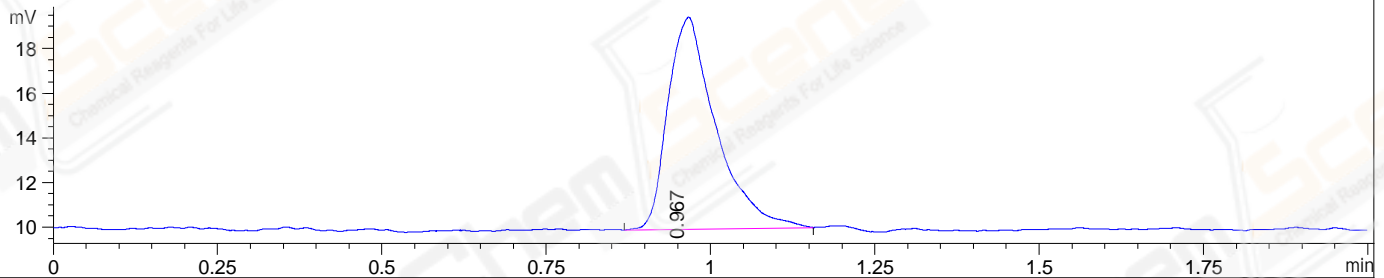


File ..\data\LY\2021-10-14\LXJ10474-022-7-031297.D Tgt Mass (EZ):  
 Injection Date : 14 Oct 21 2:21 pm +0800 Seq. Line : 0  
 Sample Name : LXJ10474-022-7 Location : P2-B-11  
 Acq. Operator : LY\_2278 Inj : 1  
 Spec. Reported : MS Integration Inj Volume : 0.2 ul  
 Acq. Method : D:\LCMS\Methods\1-POS-UPLC2.0MIN(0.8ML)-(150-1000).M  
 Analysis Method : D:\LCMS\METHODS\1-POS-UPLC2.0MIN(0.8ML)-(150-1000).M  
 CAS NO. : 846549-37-9 Walkup method: '1-POS-2MIN' Target:  
 Method Info : Mobile Phase: A: water(0.01%TFA) B:ACN(0.01%TFA)  
 Gradient: 5% to 95%B within 0.6 min  
 Flow Rate : 0.8ml/min  
 Column :Poroshell 120 EC- C18, 2.1\*50mm,1.9um A-RP-928  
 Oven Temperature : 45C

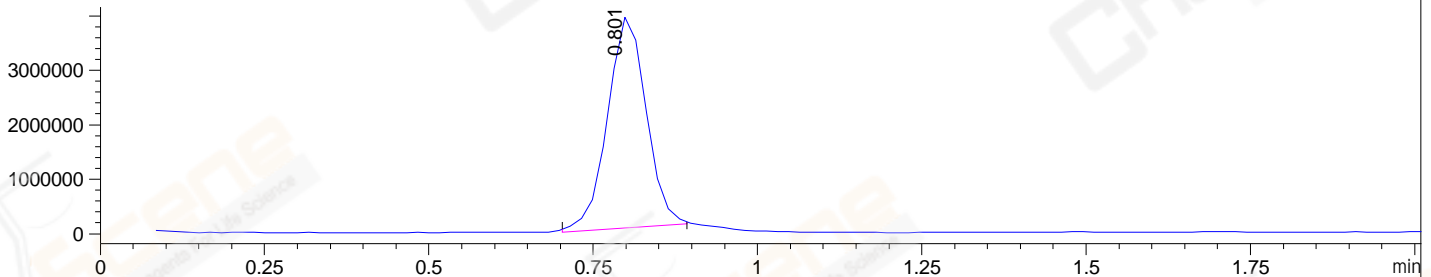
DAD1 A, Sig=214,4 Ref=off



ELS1 A, ELSD Signal



MSD1 TIC, MS File ES-API, Pos, Scan, Frag: 70



Integration Results for DAD1 A, Sig=214,4 Ref=off

RetTim	Width	Area	Height	Area%	MS(+)
0.72	0.01	5.13	-0.03	1.26	423
0.75	0.01	1.02	2.11	0.25	555
0.76	0.00	1.35	0.02	0.33	555
0.78	0.01	396.06	483.20	97.33	555
0.83	0.01	3.35	4.96	0.82	555

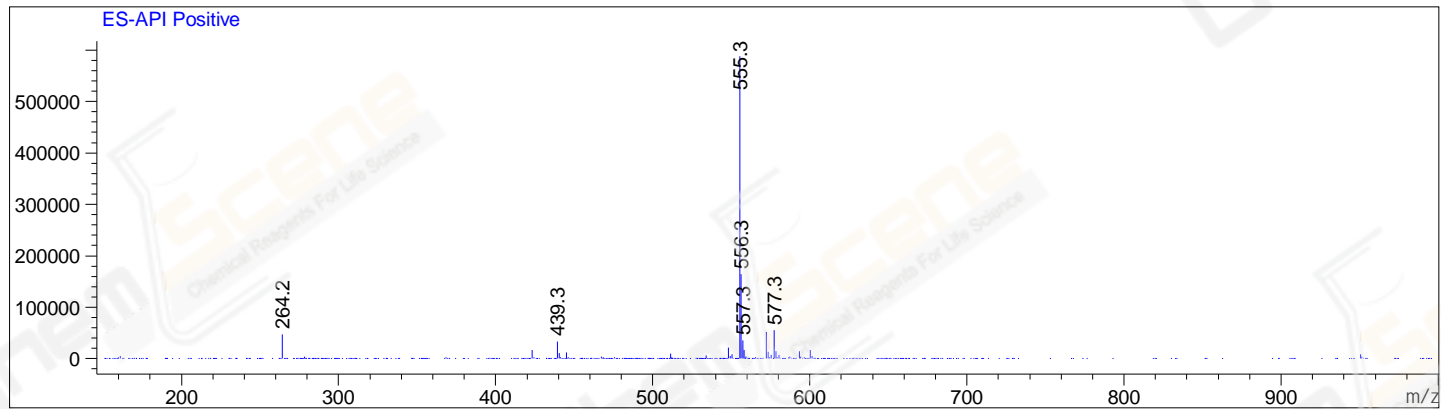
Integration Results for ELS1 A, ELSD Signal

RetTim	Width	Area	Height	Area%	MS(+)
0.97	0.08	48.30	9.49	100.00	555

Integration Results for MSD1 TIC, MS File

RetTim	Width	Area	Height	Area%	MS(+)
0.80	0.07	15873387.00	3948469.50	100.00	555

Ret. Time: 0.80 <<<< POSITIVE SPECTRA >>>>



\*\*\* End of Report \*\*\*