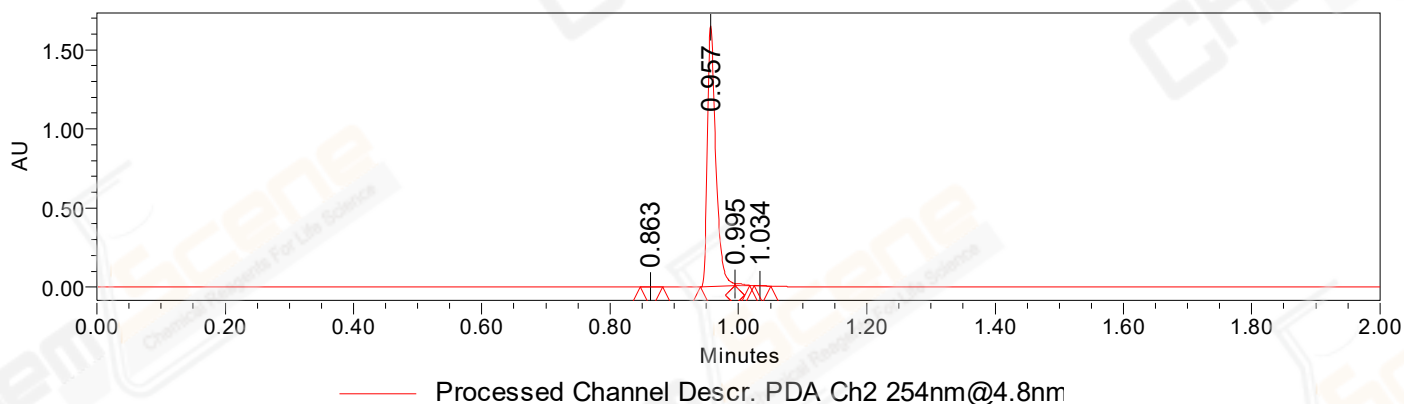


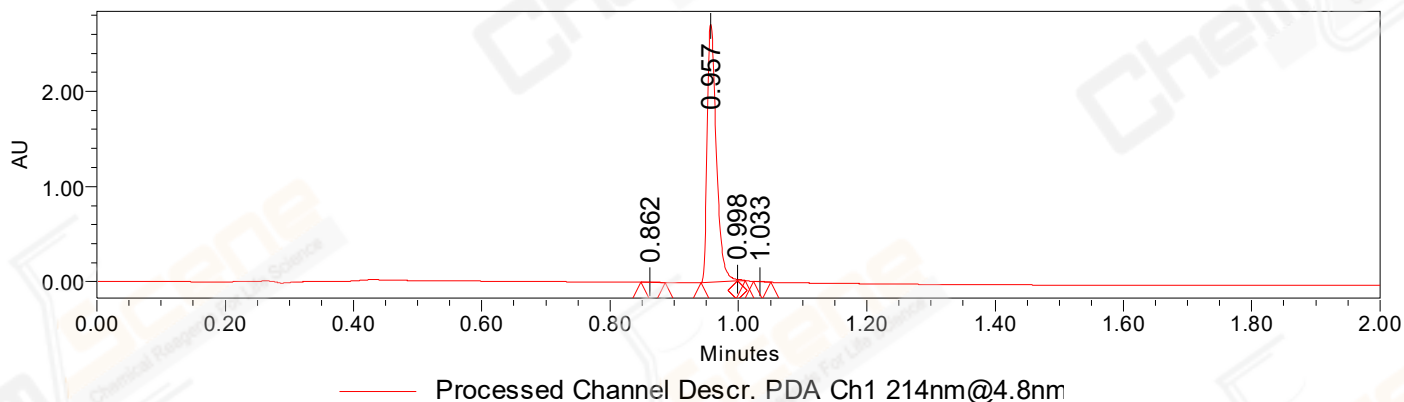
## SAMPLE INFORMATION

Sample Name:	BIZ2021-O20-WLQ10	Acquired By:	LY
CAS NO.:	871038-72-1	Date Acquired:	10/21/2021 10:31:52 AM CST
Vial:	1:A,4	Acq. Method Set:	1_POS_2MIN
Injection #:	1	Date Processed:	10/21/2021 3:02:33 PM CST,
Injection Volume:	0.50 ul	Processing Method:	PDA_01, MS_scan
Run Time:	2.8 Minutes	Channel Name:	PDA Ch1 214nm@4.8nm, MS TIC,
Sample Set Name:	20211021	Column Name:	Poroshell 120 EC-C18 A-RP-657

### Auto-Scaled Chromatogram



### Auto-Scaled Chromatogram



#### Peak Results

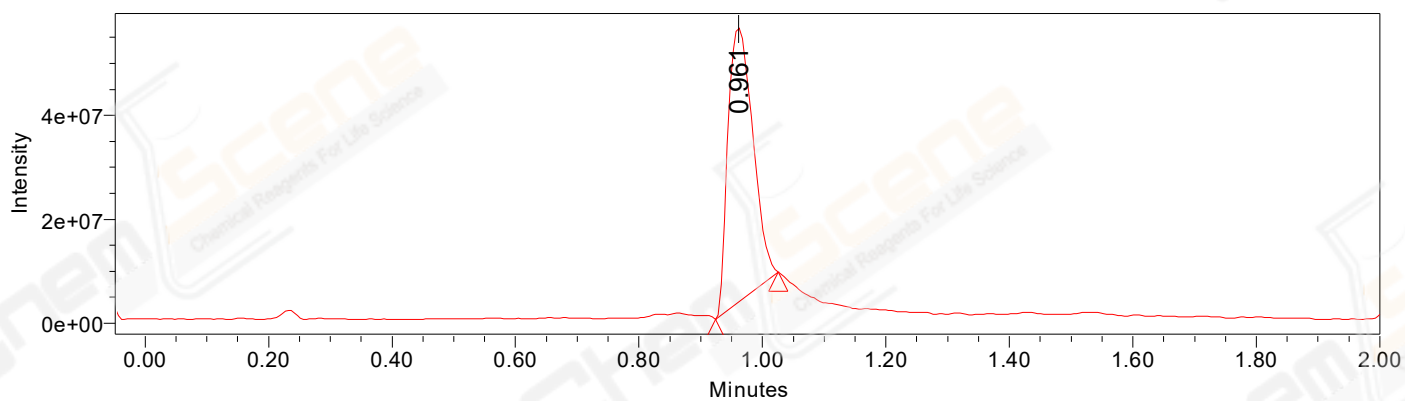
Channel Name: PDA Ch2 254nm@4.8nm

	RT	Width (sec)	Area	Height	% Area	Base Peak (Combined) (m/z)	Channel Name
1	0.863	2.050	1612	1923	0.11	407.17	PDA Ch2 254nm@4.8nm
2	0.957	3.250	1509574	1646352	99.02	226.07	PDA Ch2 254nm@4.8nm
3	0.995	1.350	10843	13728	0.71	445.19	PDA Ch2 254nm@4.8nm
4	1.034	1.550	2428	3390	0.16	908.68	PDA Ch2 254nm@4.8nm

Peak Results  
Channel Name: PDA Ch1 214nm@4.8nm

	RT	Width (sec)	Area	Height	% Area	Base Peak (Combined) (m/z)	Channel Name
1	0.862	2.250	3692	4200	0.14	407.18	PDA Ch1 214nm@4.8nm
2	0.957	3.400	2690111	2708777	99.51	226.07	PDA Ch1 214nm@4.8nm
3	0.998	0.750	6673	15836	0.25	445.19	PDA Ch1 214nm@4.8nm
4	1.033	1.650	2875	3909	0.11	908.68	PDA Ch1 214nm@4.8nm

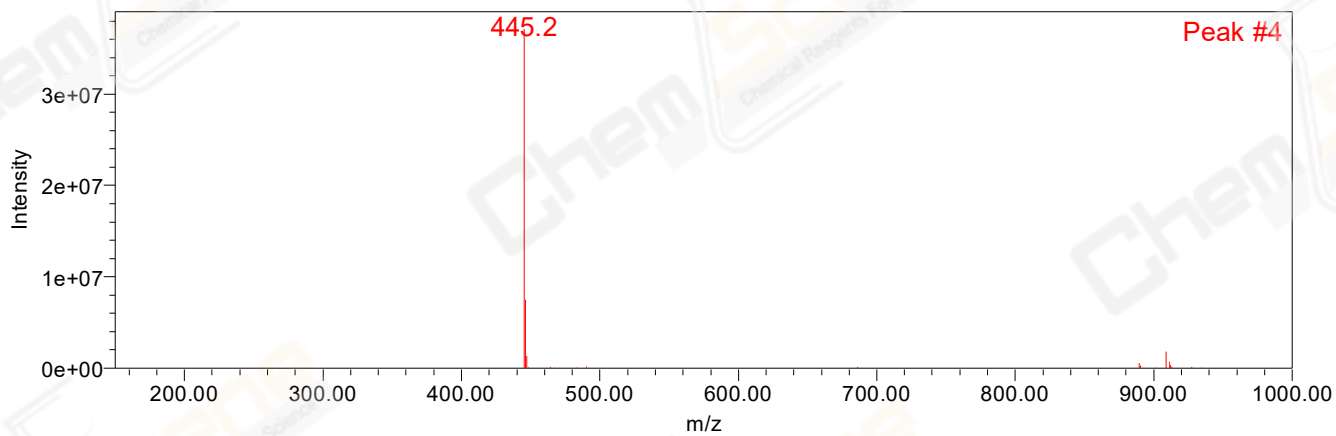
### Auto-Scaled Chromatogram



Peak Results  
Channel Name: MS TIC

RT	Width (sec)	Area	Height	% Area	Base Peak (Combined) (m/z)	Channel Name
1	0.961	148092165	52692195	100.00	445.19	MS TIC

### Match Plot



Retention Time 0.961 Channel Name MS TIC