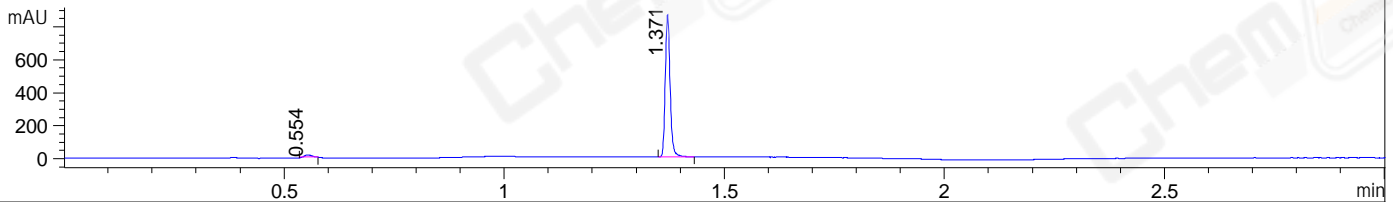
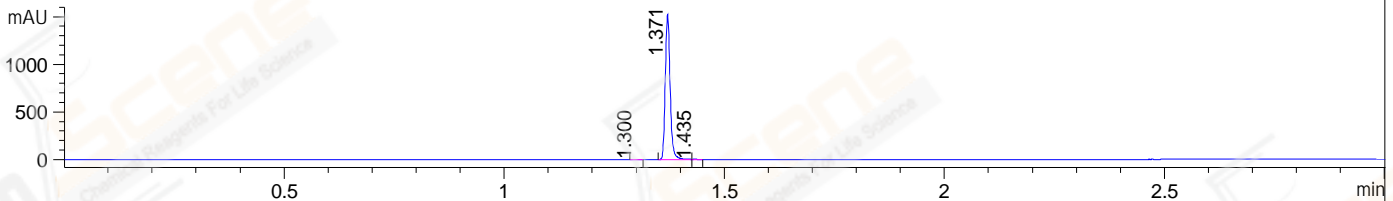


File ..\DATA\2019\20190830\713\CPK2019-830-11829.D Tgt Mass (CHM):  
 Injection Date : 30 Aug 19 4:32 pm +0800 Seq. Line : 22  
 Sample Name : CPK2019-830-11829 Location : P1-C-04  
 Acq. Operator : ZJ\_1432 Inj : 1  
 Spec. Reported : MS Integration Inj Volume : 1 ul  
 Acq. Method : D:\Chem32\1\data\2019\20190830\713\1-POS-3MIN.M  
 Analysis Method : D:\CHEM32\1\DATA\2019\20190830\713\1-POS-3MIN.M  
 Catalog No : CS-2115 Batch#11829  
 Method Info : Mobile Phase: A: water(0.01%TFA) B:ACN(0.01%TFA)  
 Gradient: 5% to 95%B within 1.3 min  
 Flow Rate :1.8ml/min  
 Column :SunFire C18, 4.6\*50mm,3.5um A-RP-433  
 Oven Temperature : 45□

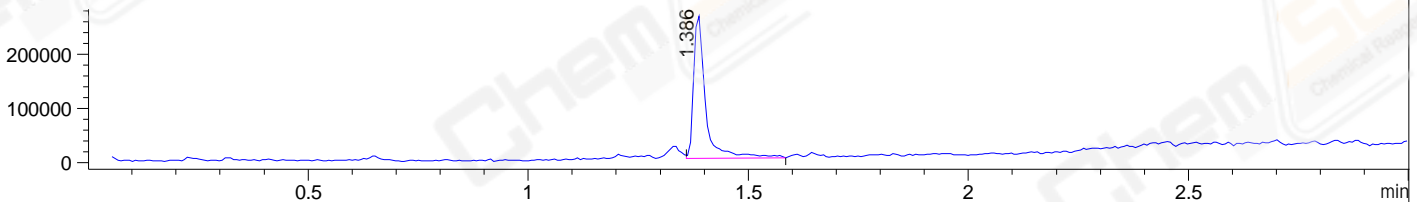
DAD1 B, Sig=214,4 Ref=off



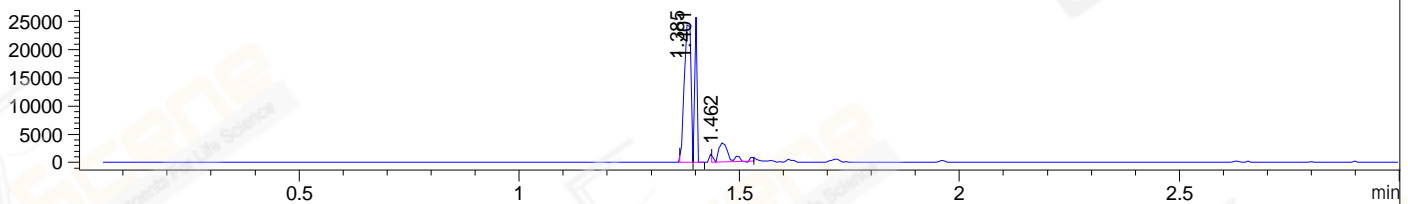
DAD1 C, Sig=254,4 Ref=off



MSD1 TIC, MS File ES-API, Pos, Scan, Frag: 70



Ion 434.3411, MSD1 434.3411, Target Mass 433.3411 +H Positive, EIC=434.04:435.04



## Integration Results for DAD1 B, Sig=214,4 Ref=off

RetTim	Width	Area	Height	Area%	MS (+)
0.55	0.01	10.61	11.82	1.59	ND
1.37	0.01	655.23	865.85	98.41	433

## Integration Results for DAD1 C, Sig=254,4 Ref=off

RetTim	Width	Area	Height	Area%	MS (+)
1.30	0.01	1.91	2.52	0.16	ND
1.37	0.01	1165.35	1528.93	99.69	433
1.43	0.01	1.73	2.06	0.15	433

## Integration Results for MSD1 TIC, MS File

RetTim	Width	Area	Height	Area%	MS (+)
1.39	0.03	496097.47	265945.56	100.00	433

Ret. Time: 1.39

<<<< POSITIVE SPECTRA >>>>

ES-API Positive

