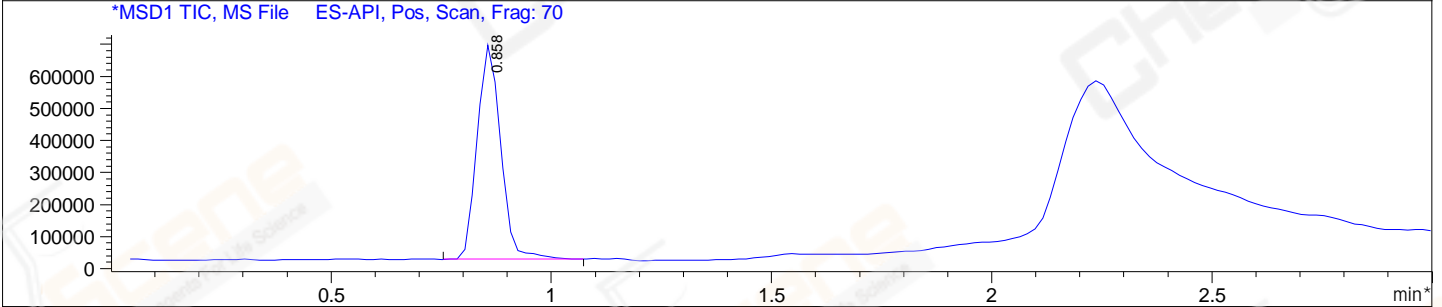
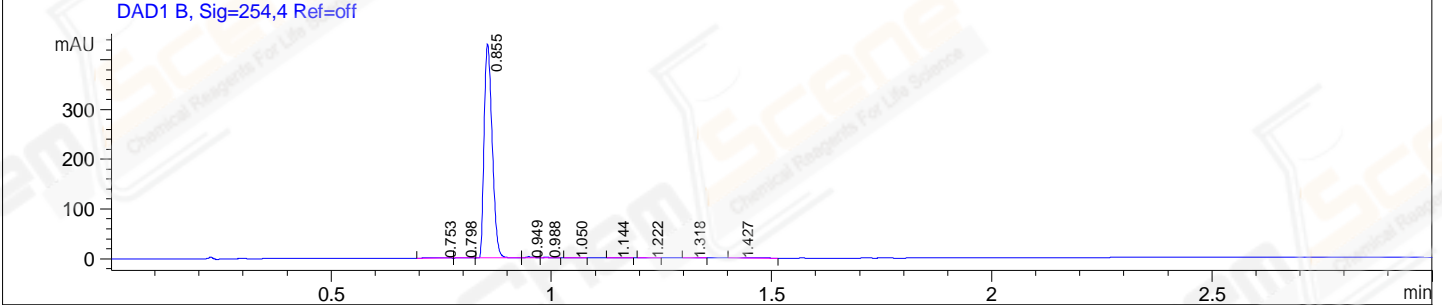
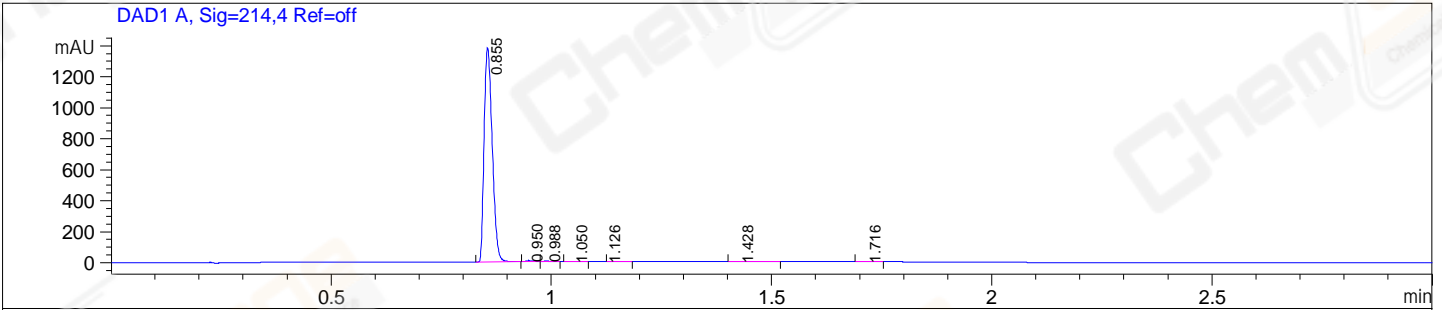


File E:\ChemStation\1\DATA\2023\2023-12\2023-12-18\CPK2023-D18-11853-UPLC-MS-10-022325.D  
 Injection Date : 18-Dec-23, 14:54:03 Tgt Mass(EZX) :  
 Sample Name : CPK2023-D18-11853 Location : P1-D-06  
 Acq. Operator : LY\_2278 Inj : 1  
 Spec. Reported : MS Integration Inj Volume : 0.8 ul  
 Acq. Method : E:\ChemStation\1\Methods\1-POS-UPLC3.0MIN(1.2)(150-1000).M  
 Analysis Method : E:\CHEMSTATION\1\METHODS\1-POS-UPLC3.0MIN(1.2)(150-1000).M  
 CAS NO. : 1208315-24-5 WalkUp method: '1-POS-3MIN' Project: CPK2023  
 Method Info : Mobile Phase: A: water(0.01%TFA) B:ACN(0.01%TFA)  
 Gradient: 5% to 95%B within 2.0 min  
 Flow Rate :1.2ml/min  
 Column :Shim-pack Scepter C18-120, 3.0\*33mm,3um  
 Oven Temperature : 45C



Integration Results for DAD1 A, Sig=214,4 Ref=off

RetTim	Width	Area	Height	Area%
0.86	0.02	1762.66	1380.12	98.93
0.95	0.02	7.45	6.39	0.42
0.99	0.01	3.29	3.75	0.18
1.05	0.02	1.02	0.78	0.06
1.13	0.02	4.00	0.07	0.22
1.43	0.04	1.13	0.42	0.06
1.72	0.03	2.21	1.26	0.12

Integration Results for DAD1 B, Sig=254,4 Ref=off

RetTim	Width	Area	Height	Area%
0.75	0.04	1.00	0.36	0.18
0.80	0.02	0.35	0.27	0.06
0.86	0.02	545.97	429.76	98.58
0.95	0.02	2.45	2.10	0.44
0.99	0.01	1.12	1.25	0.20
1.05	0.02	0.46	0.38	0.08
1.14	0.02	1.23	0.86	0.22

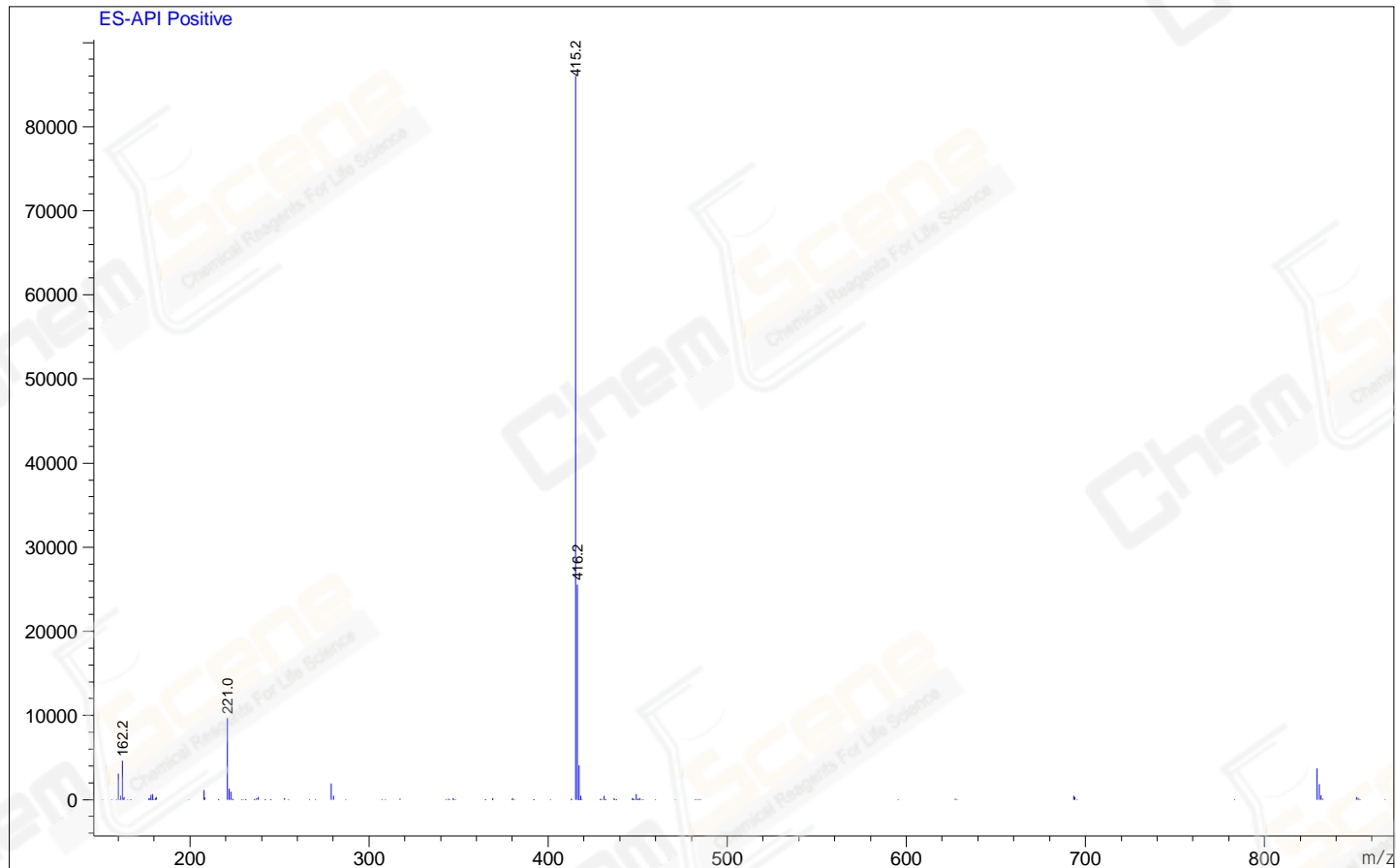
1.22	0.02	0.55	0.45	0.10
1.32	0.03	0.26	0.14	0.05
1.43	0.03	0.41	0.21	0.07

Integration Results for MSD1 TIC, MS File

RetTime	Width	Area	Height	Area%
0.86	0.06	2479047.25	668816.63	100.00

Ret. Time: 0.86

<<<< POSITIVE SPECTRA >>>>



\*\*\* End of Report \*\*\*